

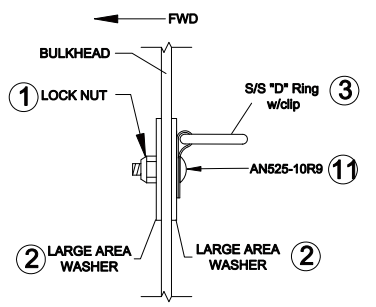
CESSNA 170 SERIES
 EXTENDED BAGGAGE, INSTALLATION

SCALE		TOLERANCES:
NOT TO SCALE		±3° ± $\frac{1}{8}$
DR. BY TDK	APP. BY	DIMENSION IN INCHES
DATE 07-09-04	DATE	

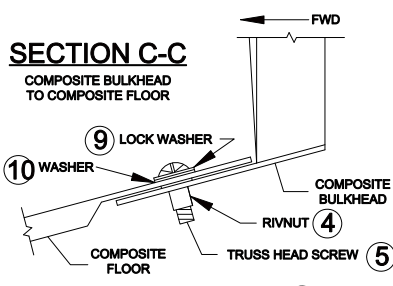
LIST OF MATERIALS				
ITEM	QTY	PART NUMBER	DESCRIPTION	NOTES
1	4	MS21044N3	NUT	
2	8	AN970-3	WASHER	
3	4	SSDRC-3/4	"D" RING	
4	13	NAS1329A3K80	RIVNUT	
5	13	AN526-10R10	SCREW	
6	1	2004-1	BULKHEAD	
7	1	2004-2	FLOOR	
8	1	2015009-3	CESSNA CARGO NET	OR PMA EQUIVALENT
9	13	MS35333-39	LOCK WASHER	
10	13	AN960-10L	WASHER	
11	4	AN525-10R9	SCREW	

- NOTES:**
- SEE INSTALLATION INSTRUCTIONS FOR DETAILED PROCEDURE.
 - SOME INSTALLATIONS MAY REQUIRE MOVING THE ELT TO AVOID INTERFERENCE.
 - THE STRINGER AND DOUBLERS AT STA. 108 MAY BE REMOVED FOR THIS INSTALLATION ONLY IF BAGGAGE SHELF IS NOT INSTALLED.
 - NOTCH THE COMPOSITE BULKHEAD TO ACCOMMODATE ANY WIRING OR FUSELAGE STRINGERS. USE FILE. **CAUTION: WEAR PROPER PROTECTION. DO NOT BREATHE DUST!**
 - OPTIONAL INSTALLATION:**
 USE ANCHOR NUT MS21059L3 IN PLACE OF RIVNUTS.
 USE AN426 RIVETS, DIMPLE THE BULKHEAD AND DOUBLER, COUNTER SINK THE COMPOSITE FLOOR.
 - SEE SHEET 2 FOR SECTION DETAILS B-B, C-C, D-D.
 - CESSNA PART NUMBER 2015009-3 CARGO NET REQUIRED FOR INSTALLATION. NOT SUPPLIED WITH KIT.

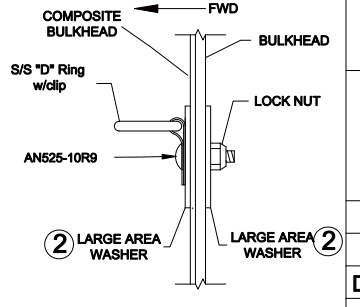
CHG. LET.	CHANGE	BY	DATE
A	REVISED NOTE 3. REMOVED INSTALLATION WEIGHT. REVISED LIST OF MATERIALS	CDB	1/16/2014
REVISIONS			



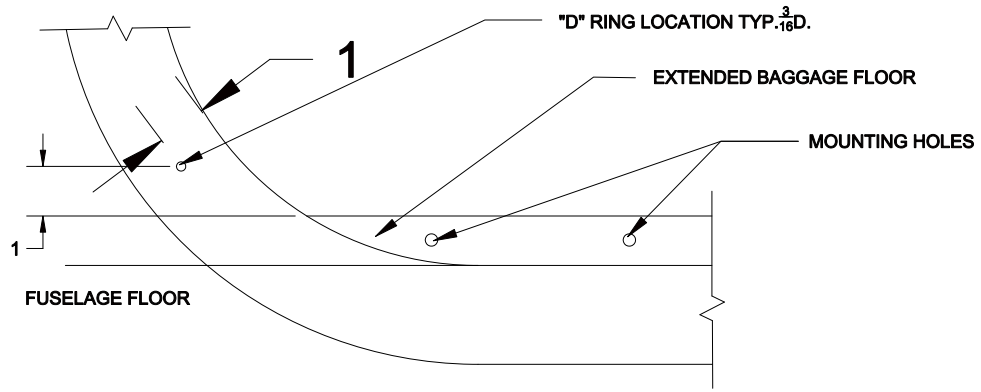
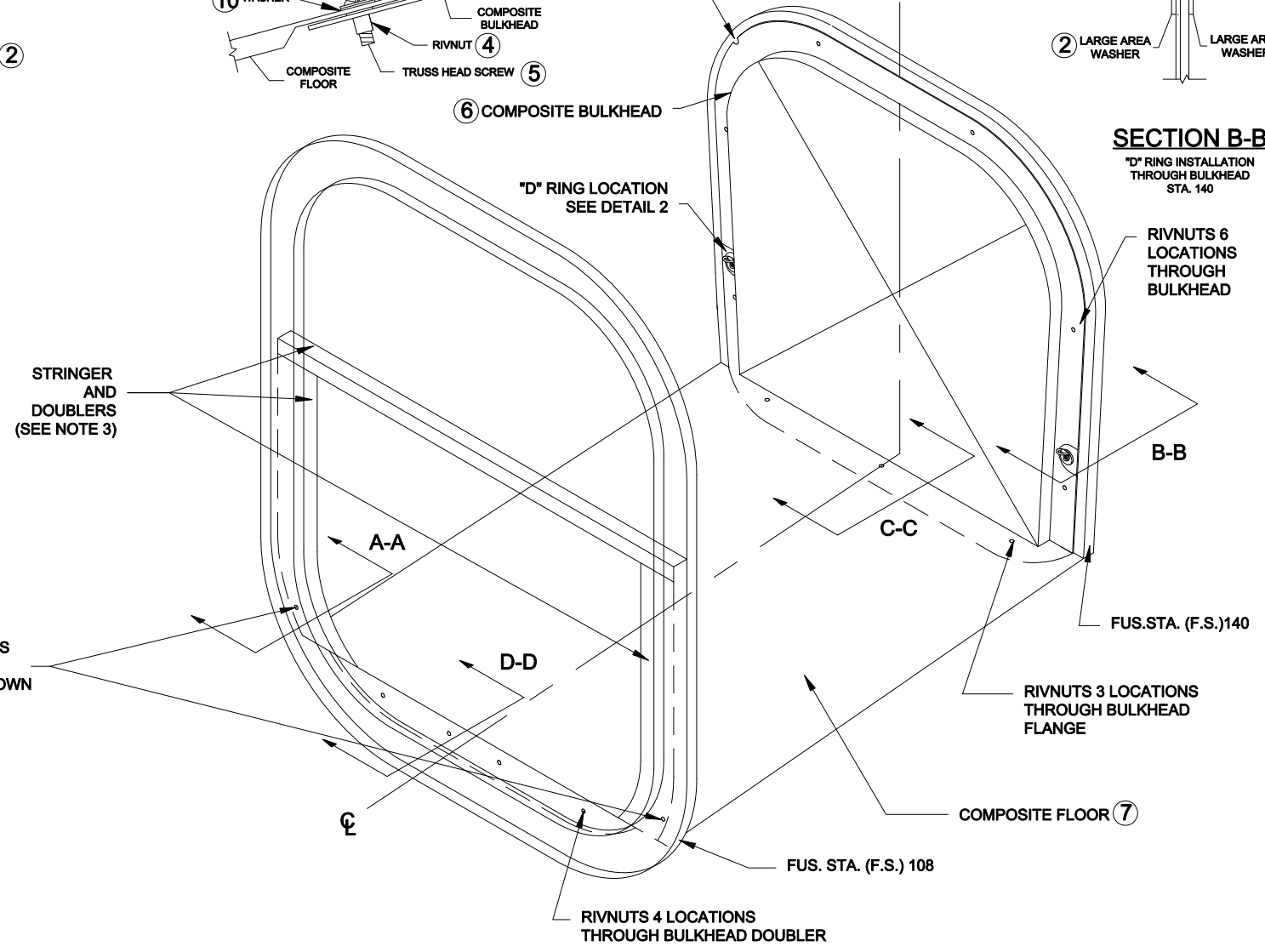
SECTION A-A
 "D" RING INSTALLATION THROUGH BULKHEAD STA. 108



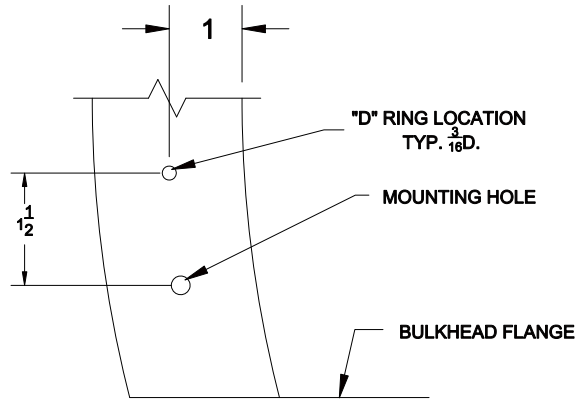
SECTION C-C
 COMPOSITE BULKHEAD TO COMPOSITE FLOOR



SECTION B-B
 "D" RING INSTALLATION THROUGH BULKHEAD STA. 140



1
 DETAIL
F.S. #108 "D" RING LOCATION-TYP. 2
 LEFT SIDE SHOWN

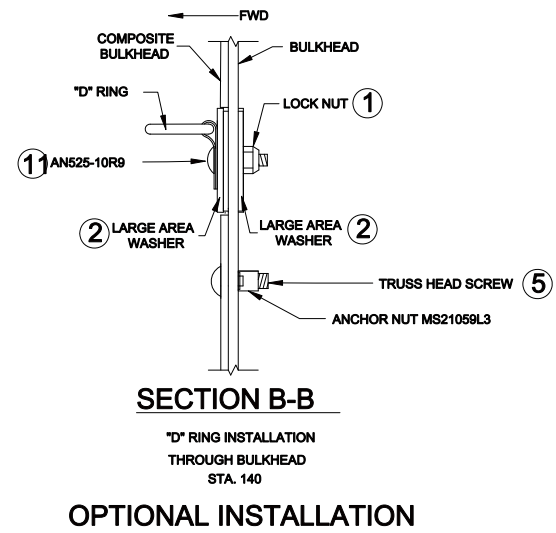
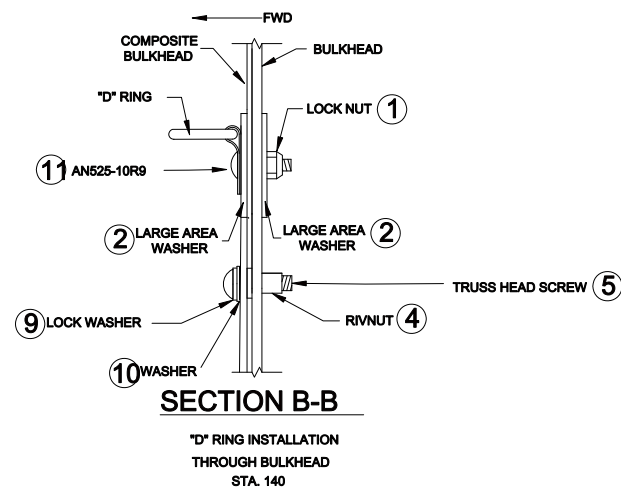


2
 DETAIL
F.S. #140 "D" RING LOCATION-TYP. 2
 LEFT SIDE SHOWN

CESSNA 170 SERIES

EXTENDED BAGGAGE, INSTALLATION

SCALE	CH. BY JLP	TOLERANCES: ±3° ± $\frac{1}{8}$
NOT TO SCALE	DATE 07/09/04	
DR. BY JDP	APP. BY	
DATE 07-09-04	DATE	



NOTES:

1. LIST OF MATERIALS ON SHEET 1.

