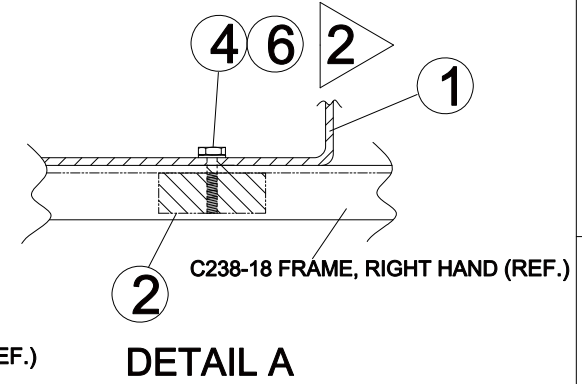
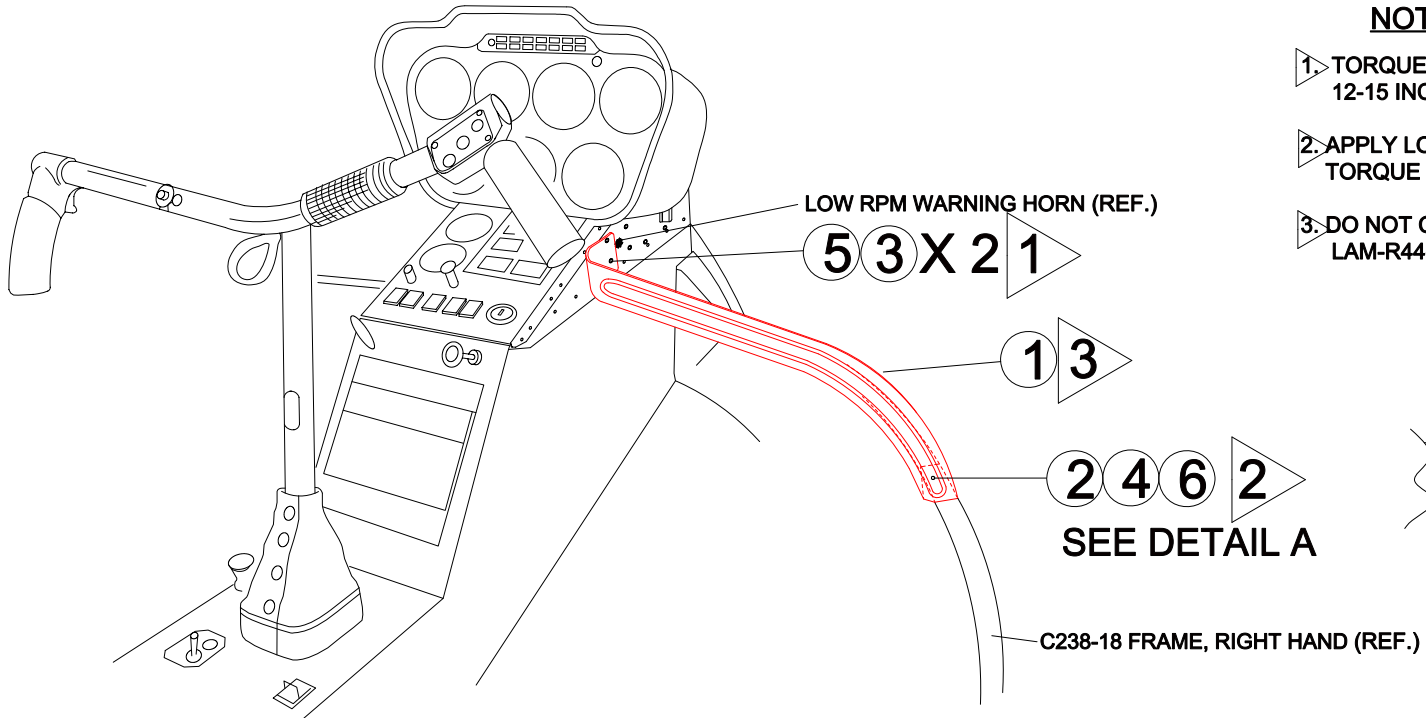


| REVISIONS |   |           |          |
|-----------|---|-----------|----------|
| LTR       | DESCRIPTION   | DATE      | APPROVED |
| A         | ADDED SHEET 2. REVISED ITEM 3 FASTENER LENGTH. ADDED TORQUE VALUE TO NOTE 2 SHEET 1. ADDED NOTE 1 FLAG SHEET 1. CORRECTED ITEM 5 P/N. | 1/20/2014 | CDB      |
| B         | REVISED ITEM 3  | 2/25/2014 | CDB      |

**NOTES**

1. TORQUE MOUNTING SCREWS TO 12-15 INCH POUNDS.
2. APPLY LOCTITE 242 TO THREADS OF AN3-4A BOLT. TORQUE TO 35-40 INCH POUNDS.
3. DO NOT COVER LOW RPM WARNING HORN GRILL WITH LAM-R44-1 MOUNT BRACKET.



| NO. | QTY | CODE-IDENT-NO | PART NO.      | DESCRIPTION                | NOTES |
|-----|-----|---------------|---------------|----------------------------|-------|
| 6   | 1   |               | NAS1149F0363P | WASHER                     |       |
| 5   | 2   |               | NAS1149DN832J | WASHER                     |       |
| 4   | 1   |               | AN3-4A        | BOLT                       |       |
| 3   | 2   |               | MS27039C0815  | SCREW                      |       |
| 2   | 1   | 17564         | LAM-R44-2     | MOUNT ATTACH CLAMP FITTING |       |
| 1   | 1   | 17564         | LAM-R44-1     | BRACKET                    |       |
| X   |     | 17564         | LAM-R44       | PORTABLE DEVICE MOUNT KIT  |       |

**LIST OF MATERIALS (PER SHIP SET)**

|   |         |                   |                |  |                     |
|---|---------|-------------------|----------------|--|---------------------|
| UNLESS OTHERWISE SPECIFIED DIMENSIONS ARE IN INCHES |         | CONTRACT NO.      |                | <b>Airglas, Inc.</b><br>Anchorage, Alaska<br><b>LAM-R44 PORTABLE DEVICE MOUNT BRACKET<br/>         INSTALLATION ON<br/>         ROBINSON R44</b> |                     |
| DECIMALS  | ANGLES  | SPEC. CONTROL NO. |                |  |                     |
| X ± .1  | X' ± 2" | HEAT TREAT        |                | Approved by: <b>CDB</b>  | Size Code Ident.No. |
| XX ± .1   |         | MATERIAL          | GOV. SPEC.     | Checked by: <b>CDB</b>   | B 17564             |
| XXX ± .1  |         | STEEL             | MIL - H - 6875 | Drawn by: <b>JDH</b>   | LAM-R44             |
|   |         | ALUM.             | MIL - H - 6868 | Date: <b>JUNE 28, 2013</b>   | REV                 |
|   |         | MAG. CAST         | MIL - H - 6857 |  | B                   |
|   |         |                   |                | Scale: Do Not Scale  | Sheet 1 OF 2        |

THIS DRAWING INCLUDES INFORMATION PROPRIETARY TO AIRGLAS, INC. AND IS SUBMITTED FOR EVALUATION ONLY AND SHALL NOT BE USED TO MANUFACTURE OR REPRODUCE WITHOUT PERMISSION OF AIRGLAS, INC.

This document and the information disclosed herein are proprietary information of Airglas, Inc. Neither this document nor the information contained herein shall be transmitted, reproduced, copied, or disclosed in any form or by any means without the written authorization of Airglas, Inc.

The information disclosed herein includes trade secrets and confidential business and/or financial information and falls within exemption (b) (4) of 5 USC 552 (FOIA) and the prohibitions of 18 USC 1905.