

* NOTICE *
 INFORMATION CONTAINED HEREIN IS PROPRIETARY TO AEROTWIN, INC. AND MAY NOT BE DISCLOSED IN WHOLE OR IN PART OR USED FOR ANY DESIGN OR MANUFACTURE UNLESS THE USER POSSESSES DIRECT WRITTEN AUTHORIZATION FROM AEROTWIN, INC..

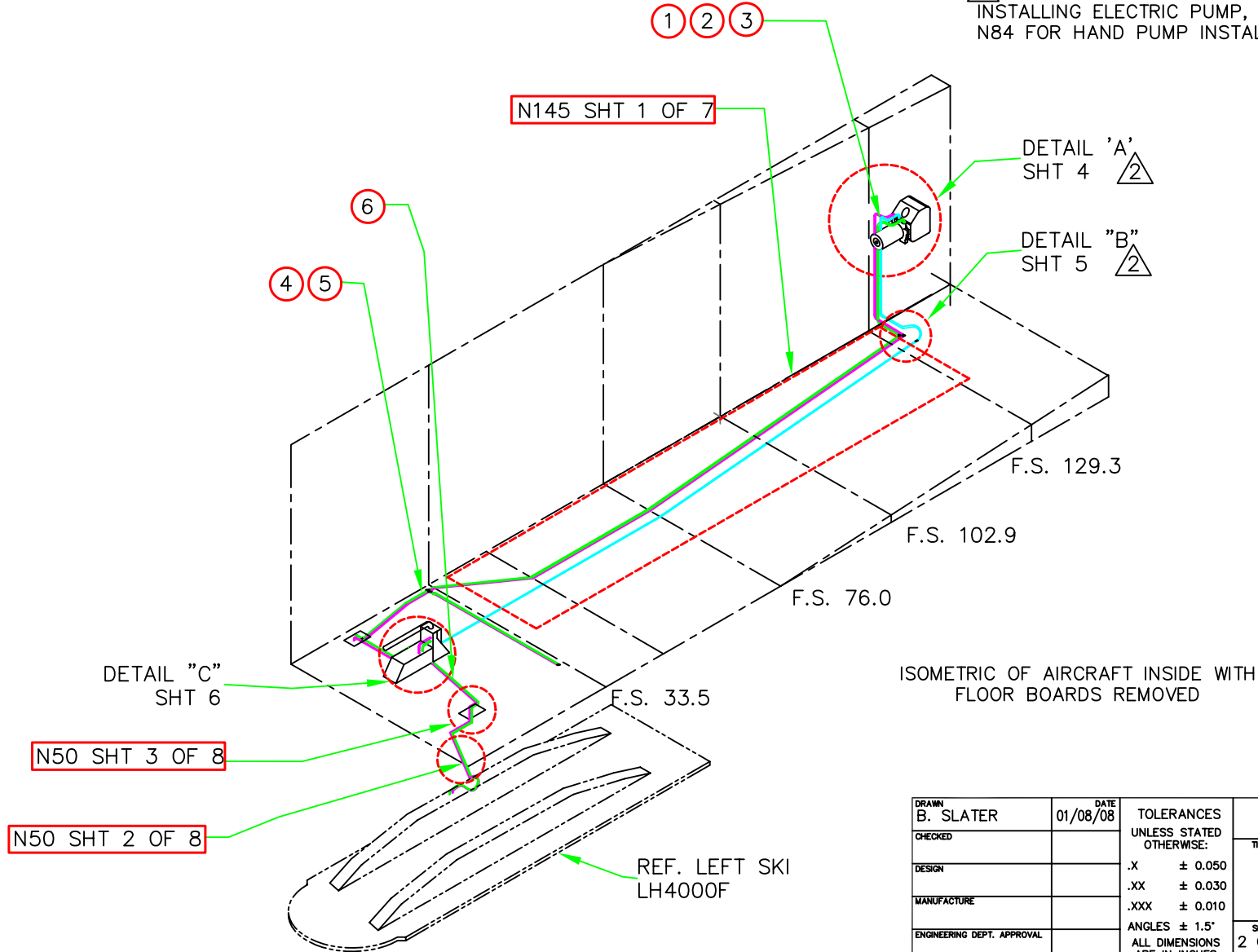
ISS	DESCRIPTION	INIT	DATE
1	INITIAL RELEASE		
2	ECO AT-125	BAS	05/05/08

UP	DN	RTN
1013-01	1013-02	1013-03
1013-04	1013-05	1013-06
1013-07	1013-08	

ENGINEERING NOTES:

1. SEE BILL OF MATERIALS ON SHEET 8.

2. ELECTRICAL HYDRAULIC PUMP IS OPTIONAL. IF NOT INSTALLING ELECTRIC PUMP, REFERENCE FOUND DWG. NO. N84 FOR HAND PUMP INSTALLATION.



ISOMETRIC OF AIRCRAFT INSIDE WITH FLOOR BOARDS REMOVED

DRAWN B. SLATER	DATE 01/08/08	TOLERANCES UNLESS STATED OTHERWISE: .X ± 0.050 .XX ± 0.030 .XXX ± 0.010 ANGLES ± 1.5° ALL DIMENSIONS ARE IN INCHES MACHINED SURFACES: FINISH TO ∇ 125 OR BETTER	<i>AeroTwin, Inc.</i>		
CHECKED			TITLE AIRGLAS LH4000F HYDRAULIC INST'LL		
DESIGN			SHEET 2 OF 8	DRAWING NO. FND-SKI-1010	ISSUE 2
MANUFACTURE			MOD. NUMBER	NEXT ASSEMBLY	PLOT SCALE NTS
ENGINEERING DEPT. APPROVAL			DO NOT SCALE PRINT		
APPROVAL					
EFFECTIVITY PART NUMBER	EFFECTIVITY GENERAL				