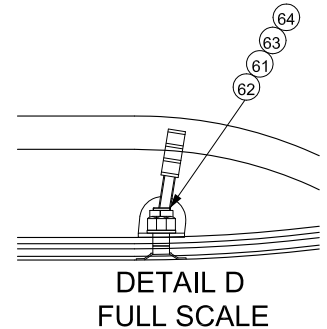
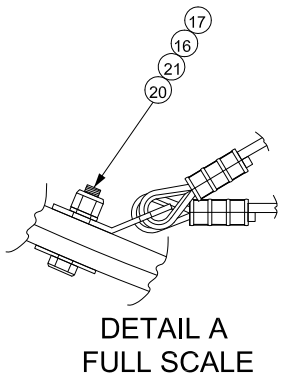
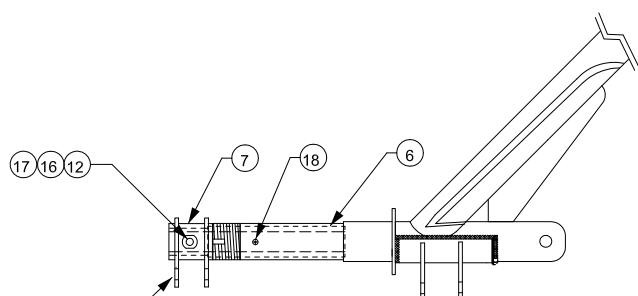
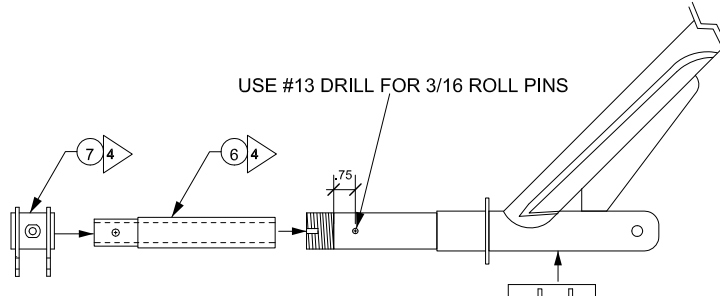


- NOTES**
1. INSTALL PER AIRGLAS INSTALLATION INSTRUCTIONS (MANUAL GLH3000-105)
 2. LEFT SKI IS SHOWN, RIGHT SKI IS OPPOSITE
 3. QTY'S SHOWN ARE FOR BOTH SKIS
 4. ITEMS 5, 6 & 7 ARE MANUFACTURED AND WELDED AT AIRGLAS FACTORY ONLY



REVISION BLOCK			
REV	DESCRIPTION	APP'D BY	DATE
A	Minor Hardware Changes/ Sheet 3 added	CED	1 JAN 10
B	Cylinder/Hardware Changes	CED	1 MAR 11
C	Changed GLH3000-17 design & hardware	CED	9 NOV 11
D	CORRECTED DETAIL D HARDWARE. CONVERTED REV BLOCK TO EXCEL DOCUMENT.	CDB	9/6/2016
E	ADDED DUAL TAILWHEEL OPTION AND NOTE 6 ON SHEET 2. COMBINED RECORD OF REVISION FOR SHEETS 1 THRU 3. CONVERTED LIST OF MATERIALS ON SHEET 1 TO OLE. CORRECTED LOM AND ADDED NAS/MS ALTERNATES. REVISED W&B DATA.	CDB	6/5/2017

SHEET 2 REVISION THRU REV D.			
REV	DESCRIPTION	APP'D BY	DATE
A	Minor Hardware Changes/ Sheet 3 added	CED	11 NOV 10
B	Cylinder/Hardware Changes	CED	1 MAR 11
C	Changed GLH3000-17 design & hardware. Changed hardware.	CED	25 JUN 12
D	ADDED NOTE 5. CONVERTED LIST OF MATERIALS AND REVISION BLOCK TO EXCEL DOCUMENTS. CORRECTED HARDWARE IN DETAILS F AND G. ADDED NAS AND MS ALTERNATES FOR AN HARDWARE. ADDED LOCATION OF ITEM 24, AND SEALANT NOTE FOR ITEM 40. CORRECTED PART NUMBER FOR ITEM 32. CHANGED CALL OUT ITEM 22 TO 68 IN DETAIL G.	CDB	9/6/2016

SHEET 3 REVISIONS THRU REV D				
ZONE	REV	DESCRIPTION	DATE	APRVD BY
	A	Minor Hardware Changes/ Sheet 3 added	11 Jan 10	CED
	B	Cylinder / Hardware Changes	1 Mar 11	CED
	C	Changed GLH3000-17 design & hardware	9 Nov 11	CED
	D	GLH3000-17 IB & OB DESIGNATED. ADDED NOTE 4, REVERSED DEPICTION OF OB ATTACH BOLT.	23 Mar 15	CDB

NO.	QTY	CODE-IDENT-NO	PART NO.	DESCRIPTION	NOTES
27	4	17564	GLH3000-17	YOKE STOP	
26	2	17564	LW2500-18	TAIL WHEEL ASSY	USED ON SINGLE TAIL WHEEL
25	2	17564	GLH300-5	YOKE	
24	4	17564	LH3600-01-4	YOKE PAD	
23	2		AN6-32	BOLT	
22	2	17564	PA32-206L-5 MOD.	SPACER	7/16 ID
21	4		2931	SS WASHER	
20	4		AN4-11A	BOLT	
19	4		AN380-3-2	COTTERPIN	ALT.: MS24665-281
18	2		MS171596	ROLL PIN	FOR 1 1/4" AXLES
			MS171598		FOR 1 1/2" AXLES
17	10		AN365-428	NUT	ALT.: MS21045-4
16	10		AN960-416	WASHER	ALT.: NAS1149F0463P
15	12		AN960-616	WASHER	ALT.: NAS1149F0663P
14	4		AN310-6	NUT	
13			RESERVED		
12	2		AN4-14A	BOLT	
11	2		AN6-32	BOLT	
10	2		AN6-34	BOLT	
9	2	17564	GLH3000-PA18-14	RIGGING, BUNGEE & SAFETY CABLE ASSY.	
8	2	17564	GLH300-PA18-13	RIGGING, CHECK CABLE ASSY.	
7	2	17564	LW2500-PA18-7	OB ATTACH BRACKET	
6	2	17564	LW2500-PA18-6	STUB AXLE	FOR 1 1/4" AXLES FOR 1 1/2" AXLES
			LW2500-PA18-4-1A		FOR 1 1/4" AXLES
			LW2500-PA18-4-1B		FOR 1 1/2" AXLES
5	2	17564	RESERVED		
4			RESERVED		
3	4	17564	LW2500-3	SKI ATTACH FITTING	
2	1	17564	GLH3000-2	RIGHT SKI	NOT SHOWN
1	1	17564	GLH3000-1	LEFT SKI	
X	1	17564	GLH3000-PA18	SKI KIT	BEFORE INSTALLATION, CHECK BALANCE OF SKI TO DETERMINE C.G. FORWARD OF C.L. OF MAIN AXLE, USE ACTUAL WEIGHT OF SKIS.

LIST OF MATERIALS (QTY FOR PAIR OF SKIS)			
CC-18	UNLESS OTHERWISE SPECIFIED DIMENSIONS ARE IN INCHES	CONTRACT NO.	Airglas, Inc. Anchorage, Alaska
S-18-180	DECIMALS X .1 ANGLES X" ± .2"	SPEC. CONTROL NO.	
PA-12	HEAT TREAT	Approved by: WKL	GLH3000 SKI INSTALLATION PIPER PA-18
PA-18	MATERIAL GOV. SPEC. STEEL MIL-H-8875 ALUM. MIL-H-8088 MAG. CAST MIL-H-8857	Checked by: CED	
NEXT ASSY.	USED ON	Drawn by: JDH	Size Code Ident No. GLH3000-1-PA18
		Date: 31 Aug 2009	REV E
		Scale 1:5	Sheet 1 OF 3

D

C

B

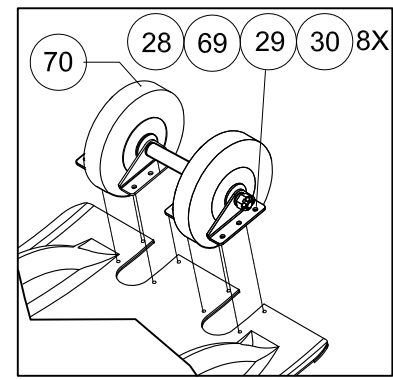
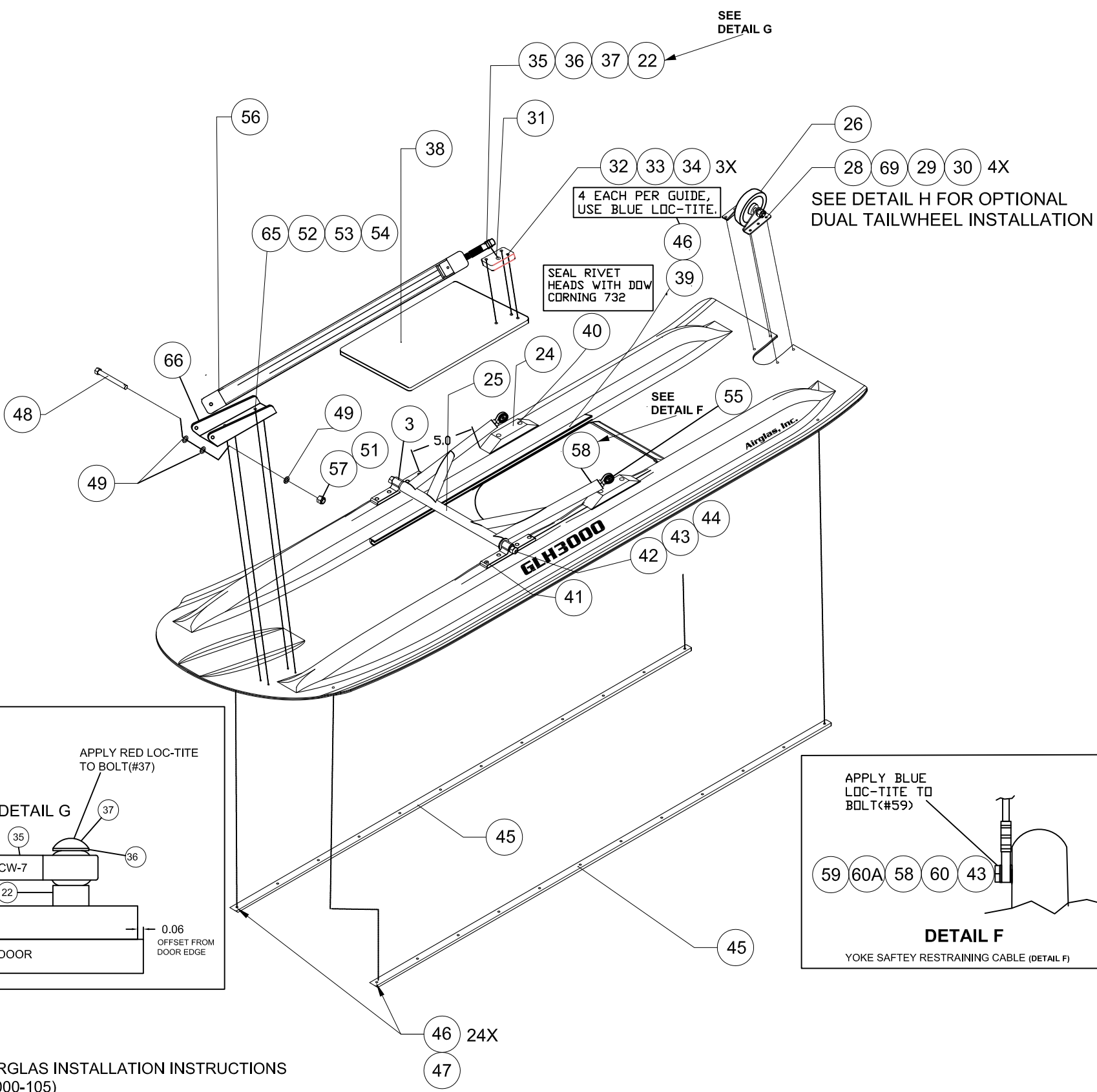
A

D

C

B

A

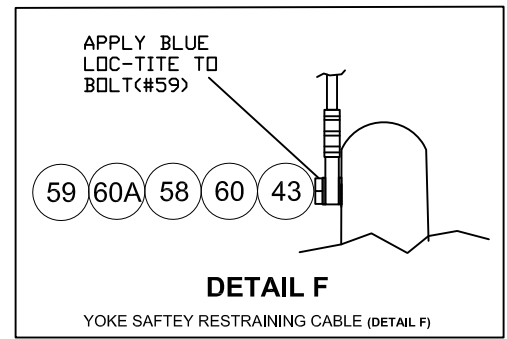
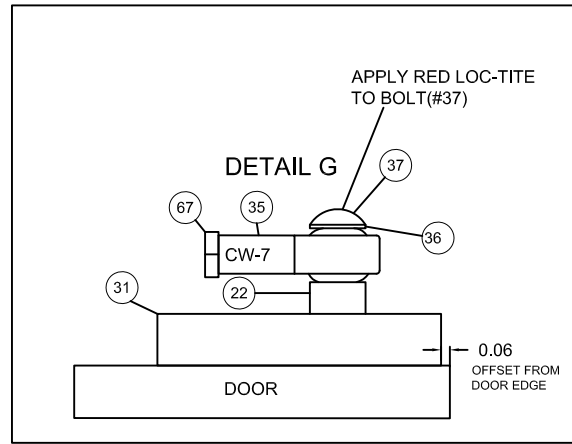


DETAIL H

NO.	QTY	CODE-IDENT-NO	PART NO.	DESCRIPTION	NOTES
70	2	17564	GLH3000-12	TAILWHEEL ASSY	OPTIONAL DUAL TAILWHEEL INSTALLATION
69	8		2931	SS WASHER	QTY 16 WITH DUAL TAILWHEEL OPTION
68	2		PA32-206L-5 MOD.	SPACER	MODIFY PA32-206L-5 (3/8" THICK)
67	2		AN316-7	JAM NUT	
66	2	17564	LH3600-9A-6	MOUNT, HYDRAULIC CYLINDER	
65	8		A3235-020-24A	COUNTERSUNK WASHER	
64	2		AN365-524	NUT	ALT.: MS21044N5
63	2		AN960-516	WASHER	ALT.: NAS1149F0563P
62	2	17564	30185	WASHER	
61	2		NAS514P524-16	SCREW	
60A	2		AN960-716L	WASHER	ALT.: NAS1149F0732P
60	2		AN960-716	WASHER	ALT.: NAS1149F0763P
59	2		AN6-10A	BOLT	
58	2	17564	GLH3000-10	YOKE SAFETY CABLE	DETAIL F SEE NOTE 5
57	2		AN380-2-2	COTTER PIN	ALT.: MS24665-132
56	2	17564	LH3600-9A	HYDRAULIC CYLINDER ASSEMBLY	
55	4		HMX6G	ROD END	
54	8		MS21042-3	NUT	
53	8		AN960-10	WASHER	ALT.: NAS1149F0363P
52	8		AN509-10R12	SCREW	ALT.: MS24694S54
51	2		AN310-4	NUT	
50			RESERVED		
49	6		AN960-416L	WASHER	ALT.: NAS1149F0432P
48	2		AN4-25	BOLT	
47	48		MS21042-3	NUT	
46	62		AN509-10R12	SCREW	ALT.: MS24694S54
45	4	17564	GLH3000-01-3	RUNNER	
44	4		AN365-624C	NUT	ALT.: MS21045-6
43	10		AN960-616	WASHER	ALT.: NAS1149F0663P
42	2	17564	GLH3000-5-6	RETAINING ROD	
41	16		AN5-11A	BOLT	
40	8		SSB-6-12	RIVET	SEAL WITH DOW CORNING 732
39	4	17564	GLH3000-01-2	GUIDE	
38	2	17564	GLH3000-8-1	DOOR	
37	2		AN27-23	CLEVIS BOLT	
36	2		AN960-716	WASHER	ALT.: NAS1149F0732P
35	2		CW-7	ROD END	
34	6		AN364-428	NUT	ALT.: MS21083N4
33	6		AN960-416L	WASHER	ALT.: NAS1149F0432P
32	6		NAS517-4-14	SCREW	
31	2	17564	GLH3000-9-8	DOOR, CYLINDER ATTACH BLOCK	
30	8		AN365-428A	NUT	ALT.: MS21044N4 QTY 16 WITH DUAL TAILWHEEL OPTION ALT.: NAS1149F0432P QTY 16 WITH DUAL TAILWHEEL OPTION
29	8		AN960-416L	WASHER	ALT.: NAS1149F0432P QTY 16 WITH DUAL TAILWHEEL OPTION
28	8		AN4-7A	BOLT	QTY 16 WITH DUAL TAILWHEEL OPTION
NO.	QTY	CODE-IDENT-NO	PART NO.	DESCRIPTION	NOTES

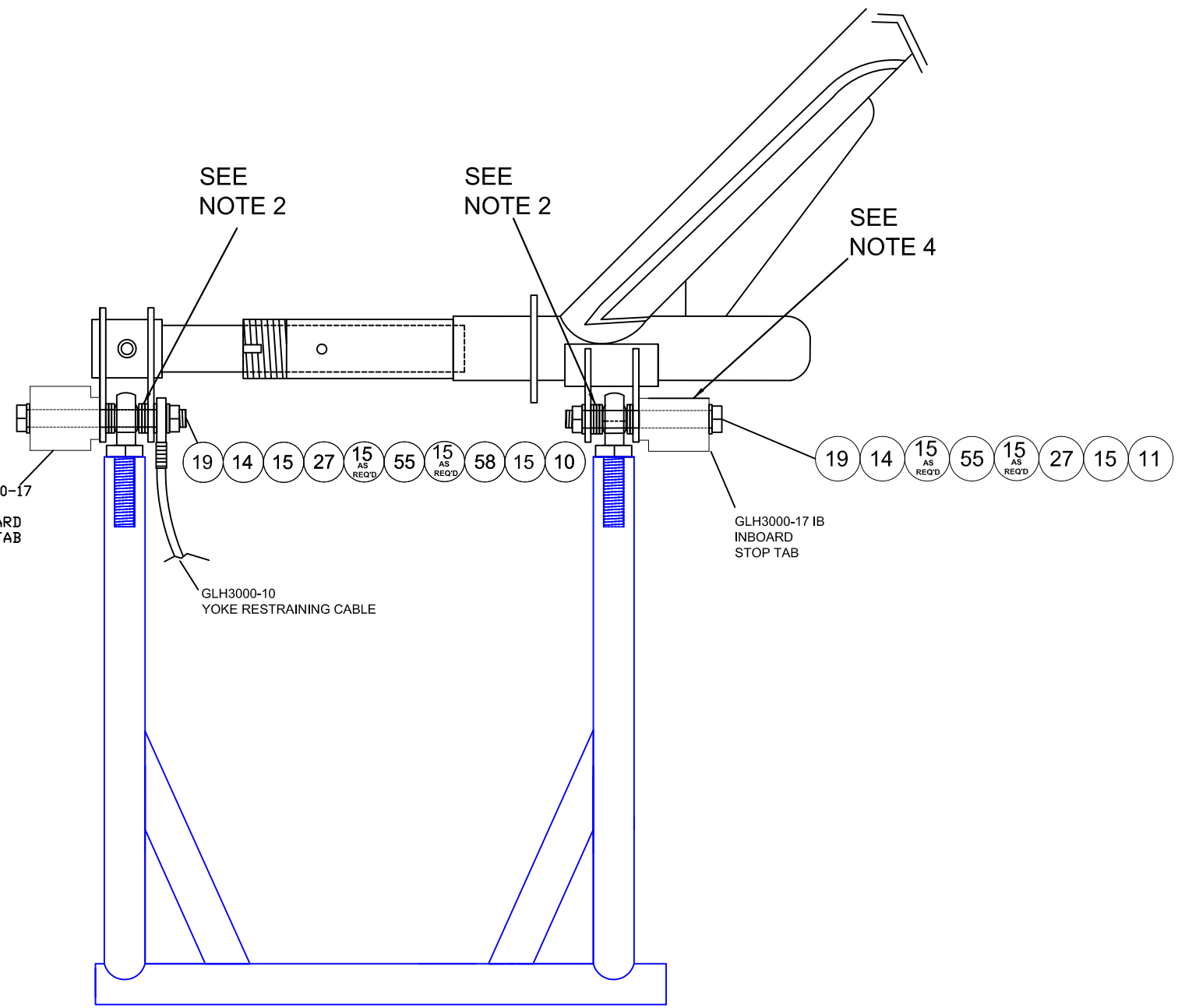
LIST OF MATERIALS (QTY. FOR PAIR OF SKIS)

UNLESS OTHERWISE SPECIFIED DIMENSIONS ARE IN INCHES		CONTRACT NO.	
CC-18	DECIMALS .X ± .1 ANGLES .XX ± .03 .XXX ± .010	SPEC. CONTROL NO.	
S-18-180	HEAT TREAT	Approved by: WKL	
PA-12	GOV. SPEC.	Checked by: CED	
PA-18	MATERIAL	Drawn by: JDH	
NEXT ASSY.	USED ON	Date: 31 Aug 2009	
APPLICATION		Size	Code Ident.No.
		B	17564
		Scale	1:5
			Sheet 2 OF 3



- NOTES**
1. INSTALL PER AIRGLAS INSTALLATION INSTRUCTIONS (MANUAL GLH3000-105)
 2. LEFT SKI IS SHOWN, RIGHT SKI IS OPPOSITE
 3. QTY'S SHOWN ARE FOR BOTH SKIS
 4. ITEMS 4, 5, 6 & 7 ARE MANUFACTURED AND WELDED AT AIRGLAS FACTORY ONLY
 5. USE GLH3000-10 (PA-18) REV B CABLE (8.25") FOR SKIS WITH BOLT HOLE CENTER 2 1/4" ABOVE SKI BOTTOM. USE GLH3000-10 (PA-18) REV. C (8.75") FOR SKIS WITH BOLT HOLE CENTER 1 3/4" ABOVE SKI BOTTOM.
 6. SKI THICKNESS MAY VARY, ADJUST FASTENER LENGTHS THRU SKI AS REQUIRED.

THIS DRAWING INCLUDES INFORMATION PROPRIETARY TO AIRGLAS, INC. AND IS SUBMITTED FOR EVALUATION ONLY AND SHALL NOT BE USED TO MANUFACTURE OR REPRODUCE WITHOUT PERMISSION OF AIRGLAS, INC.



NOTES

1. INSTALL HARDWARE AS DEPICTED. USE AN960-616 WASHERS TO SPACE THE YOKE BETWEEN GEAR MOD LUGS. FAILURE TO INCLUDE WASHER BETWEEN YOKE AND LUGS MAY CAUSE CONTACT OF TIRE ON SKI.
2. ALIGNMENT OF WHEEL INSIDE WHEEL WELL AREA CAN BE MADE BY ADJUSTMENT OF WASHER STACK (ITEM #15). CENTER WHEEL IN WHEEL WELL.
3. YOKE ROD ENDS CAN BE TURNED IN OR OUT TO ADJUST ALIGNMENT OF SKI. SKI SHOULD ALIGN WITH WHEELS WHEN COMPLETE.
4. FLAT ON INBOARD STOP TAB (GLH3000-17IB), ALLOWS FOR CLEARANCE WITH 1.5" AXLES . ROUND PORTION OF STOPS SHOULD MAKE CONTACT WITH SKI.

DETAIL "F"

THIS DRAWING INCLUDES INFORMATION PROPRIETARY TO AIRGLAS, INC. AND IS SUBMITTED FOR EVALUATION ONLY AND SHALL NOT BE USED TO MANUFACTURE OR REPRODUCE WITHOUT PERMISSION OF AIRGLAS, INC.

UNLESS OTHERWISE SPECIFIED DIMENSIONS ARE IN INCHES		CONTRACT NO.	Airglas, Inc. Anchorage, Alaska	
DECIMALS .X ± .1 ANGLES ° ± 2'		SPEC. CONTROL NO.		
CC-18	HEAT TREAT	Approved by: WKL	GLH3000 SKI INSTALLATION PIPER PA-18	
S-18-180	MATERIAL GOV. SPEC.	Checked by: CED		
PA-12	STEEL MIL - H - 6875	Drawn by: JDH	Size	Code Ident No.
PA-18	ALUM. MIL - H - 6088	Date: 31 Aug 2009	B	17564
NEXT ASSY. USED ON	MAG. CAST MIL - H - 6857	Scale: 1 : 1	GLH3000-1-PA18	REV
APPLICATION				E