

REVISIONS			
ZONE	REV	DESCRIPTION	DATE / APRVD BY

INSTALL LW3600 TAIL WHEEL
MODIFICATION ONTO SKI. ALIGN TAIL
WHEEL WITH THE CENTERLINE OF SKI.

CLAMP MOD. INTO SKI AND BACK-DRILL
HOLES, USING A #10 DRILL BIT.

COUNTERSINK ALL HOLES (13 EACH)
THAT WERE BACK-DRILLED WITH #10
DRILL BIT, DEEP ENOUGH TO MAKE
SCREWS FLUSH WITH BOTTOM OF SKI.

REMOVE NUTS HOLDING TAIL WHEEL ON.

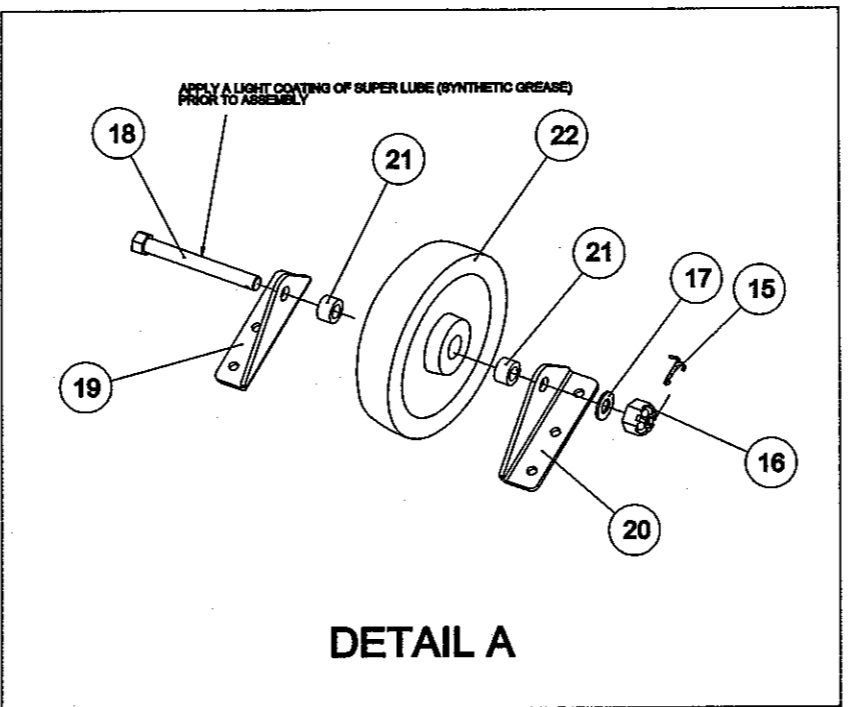
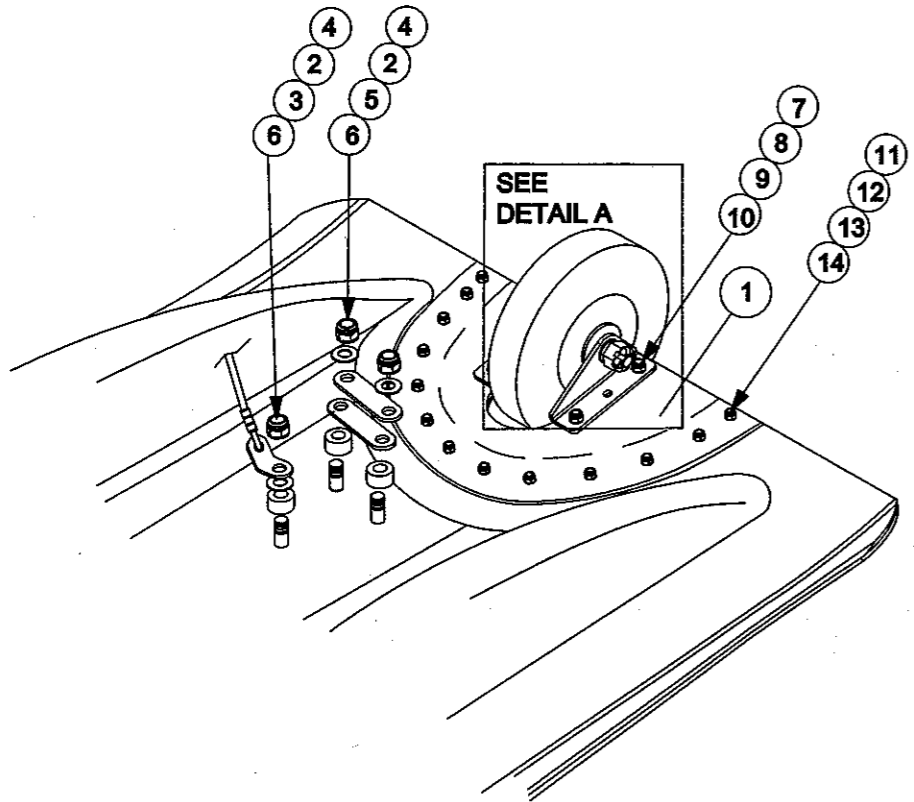
RETAIN THE L44000-11-10 TABS (2 EA)

CENTER LINE

CENTER LINE

NOTES

1. INSTALL PER AIRGLAS INSTALLATION INSTRUCTIONS (SERVICE LETTER NO. LW3600-1)
2. LEFT SKI IS SHOWN, RIGHT SKI IS OPPOSITE



DETAIL A

NO.	QTY	CODE-IDENT-NO	PART NO.	DESCRIPTION		
22	1	17564	TWNP-66	WHEEL ASSY.		
21	2		NAS75-8-012	BUSHING		
20	1	17564	L20500-18-1	TAIL WHEEL BRKT. L.H.		
19	1	17564	L20500-18-2	TAIL WHEEL BRKT R.H.		
18	1		AN8-32	BOLT		
17	2		AN960-816	WASHER		
16	1		AN310-8	NUT		
15	1		AN380-3-2	COTTER PIN		
14	13		MS24694S58**	SCREW (AN509-10R16 ALT)	**CHANGE GRIP TO FIT	
13	13		A3235-028-24A	COUNTERSUNK SS WASHER		
12	13		AN960-10	WASHER		
11	13		MS21044N3	NUT	(OR EQUIVELANT)	
10	4		AN4-6A	BOLT		
9	4		2931	SS LARGE AREA WASHER	(OR EQUIVELANT) BOLT DEPOT.COM	
8	4		AN960-4	WASHER		
7	4		MS21044N4	NUT	(OR EQUIVELANT)	
6	3	17564	PA32-206L-5	SPACER		
5	2	17564	L44000-11-10	TAB	(RETAINED FROM PREVIOUS INSTALL)	
4	3		AN363C616	NUT	(OR EQUIVELANT)	
3	1	17564	LW3600-180A-3	CHECK CABLE ASSY.	(RETAINED FROM PREVIOUS INSTALL)	
2	3		AN960-616	WASHER		
1		17564	LW3600-FTW-1	PLATE ASSY.		
X		17564	LW3600-FTW	LW3600 WHEEL MOD KIT		

LIST OF MATERIALS

UNLESS OTHERWISE SPECIFIED DIMENSIONS ARE IN INCHES		CONTRACT NO.	Airglas, Inc. Andover, Maine	
DIMENSIONAL TOLERANCES UNLESS OTHERWISE SPECIFIED		SPEC. CONTROL NO.	LW3600 FIXED WHEEL CONVERSION	
MATERIAL		HEAT TREAT	Approved by: CDB	
STEEL		GOV. SPEC.	Checked by: CDB	
ALUM.		MS-H-9275	Drawn by: JDH	
MAG. CAST		MS-H-9285	Date: 28 MAR 2012	
NEXT ARMY. UNED ON			Issue Code Ident No.	REV
APPLICATION			B 17564	LW3600-FTW (-)
			Sheet	1 OF 1

THIS DRAWING INCLUDES INFORMATION PROPRIETARY TO AIRGLAS, INC.
AND IS SUBMITTED FOR EVALUATION ONLY AND SHALL NOT BE USED TO
MANUFACTURE OR REPRODUCE WITHOUT PERMISSION OF AIRGLAS, INC.