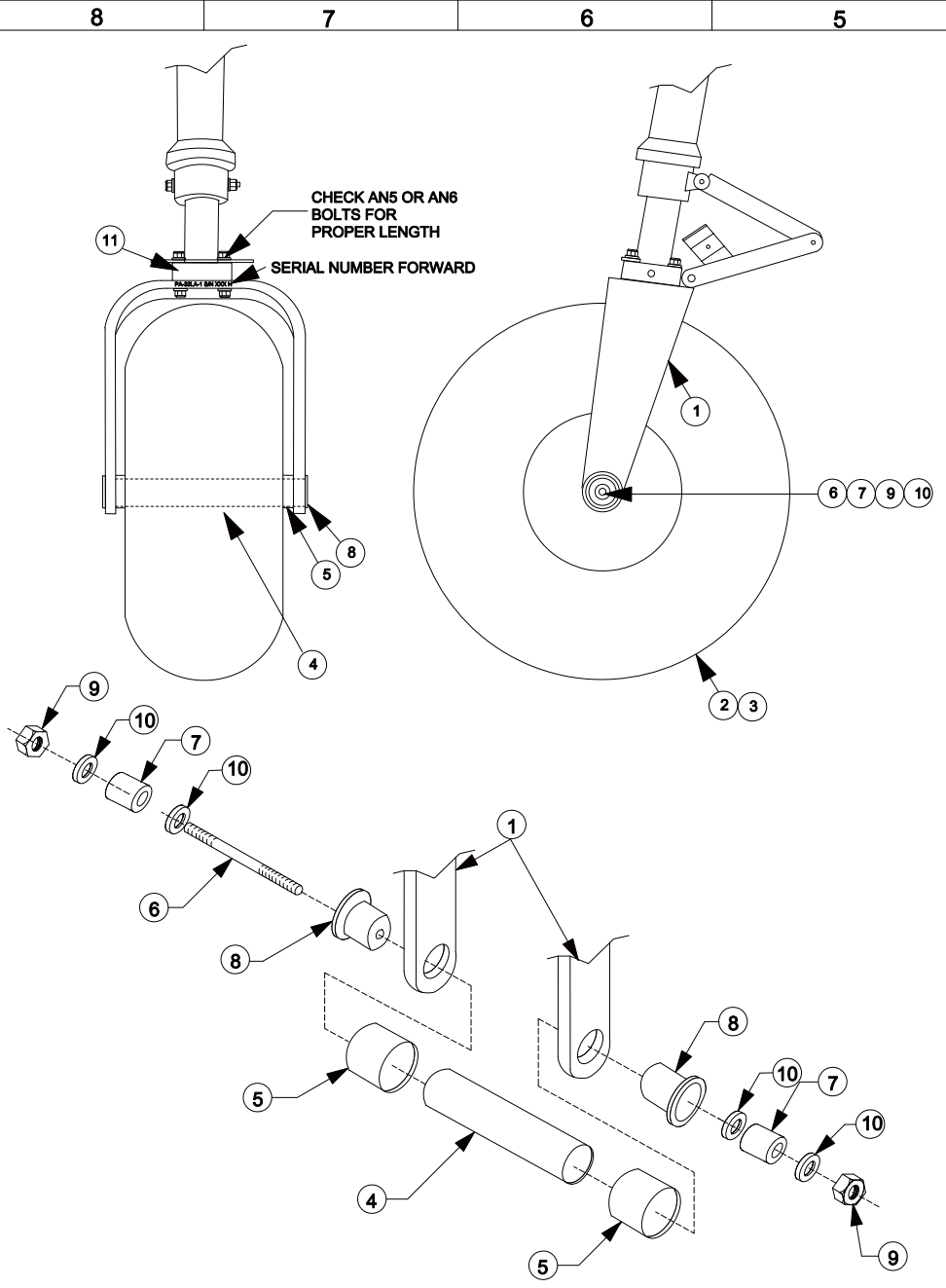


| REVISIONS |   |           |          |
|-----------|---|-----------|----------|
| LTR       | DESCRIPTION   | DATE      | APPROVED |
| A         | MODIFIED FORK, ADD SN, FWD NOTE, ADD NOTES 1, 2, & 3.   | 5/23/88   | RS       |
| B         | CONVERTED TO CAD, REMOVED INSTALLATION INSTRUCTIONS, ITEMS 4 THRU 8 CHANGED TO PA32-206L COMPONENTS, ITEM 11 ADDED. | 6/12/2012 | CDB      |

- NOTES:**
1. FOUR (4) SLEEVES ARE PROVIDED FOR USING AN5 MOUNTING BOLTS IN THE FOUR (4) 3/8 HOLES.
  2. APPLY A LIGHT COAT OF GREASE TO AXLE WHEN PACKING BEARINGS
  3. TIRE PRESSURE MAX. 23 PSIG.



| NO. | QTY | CODE IDENT. NO. | PART NUMBER           | DESCRIPTION                         |
|-----|-----|-----------------|-----------------------|-------------------------------------|
| 11  | 4   |                 | McMaster Carr 2868T54 | SLEEVE 5/16x3/8x3/8 SAE 863         |
| 10  | 4   |                 | AN960-616             | WASHER                              |
| 9   | 2   |                 | AN385-624             | NUT                                 |
| 8   | 2   | 17564           | PA32-206L-6           | CAP ASSY                            |
| 7   | 2   | 17564           | PA32-206L-5           | SPACER                              |
| 6   | 1   | 17564           | PA32-206L-4           | AXLE ROD                            |
| 5   | 2   | 17564           | PA32-206L-3           | BEARING SPACER                      |
| 4   | 1   | 17564           | PA32-206L-2           | AXLE TUBE                           |
| 3   | 1   |                 |                       | 8.00 X 6 TUBE (NOT FURNISHED)       |
| 2   | 1   |                 |                       | 8.00 X 6 4 PLY TIRE (NOT FURNISHED) |
| 1   | 1   | 17564           | PA-32LA-1             | NOSE FORK                           |
| 1   | 1   | 17564           | PA-32LA               | 8.00X6 NOSE WHEEL INSTALLATION KIT  |

| LIST OF MATERIALS |         |   |                   |
|-------------------|---------|---|-------------------|
|                   |         | UNLESS OTHERWISE SPECIFIED DIMENSIONS ARE IN INCHES TOLERANCES ON | CONTRACT NO.      |
|                   |         | DECIMALS ANGLES   | SPEC. CONTROL NO. |
|                   |         | .X ± .1 .XX ± .03 .XXX ± .010 .X ± .5                             |                   |
|                   |         | HEAT TREAT  | Approved by :     |
|                   |         | MATERIAL GOV. SPEC.   | Checked by :      |
|                   |         | STEEL MIL - H - 6875  | Drawn by : CDB    |
|                   |         | ALUM. MIL - H - 6068  | Dated : 8/8/87    |
|                   |         | MAG. CAST MIL - H - 6857  |                   |
| NEXT ASSY.        | USED ON | APPLICATION   |                   |

|   |                |       |        |
|---|----------------|-------|--------|
| <b>AIRGLAS, INC.</b><br>Anchorage, Alaska |                |       |        |
| <b>8.00x6 NOSE WHEEL INSTALLATION KIT</b> |                |       |        |
| Size                                      | Code Ident.No. | REV   | B      |
| D   | 17564          | PA-32 | B      |
| Scale                                     | 1:1            | Sheet | 1 of 1 |