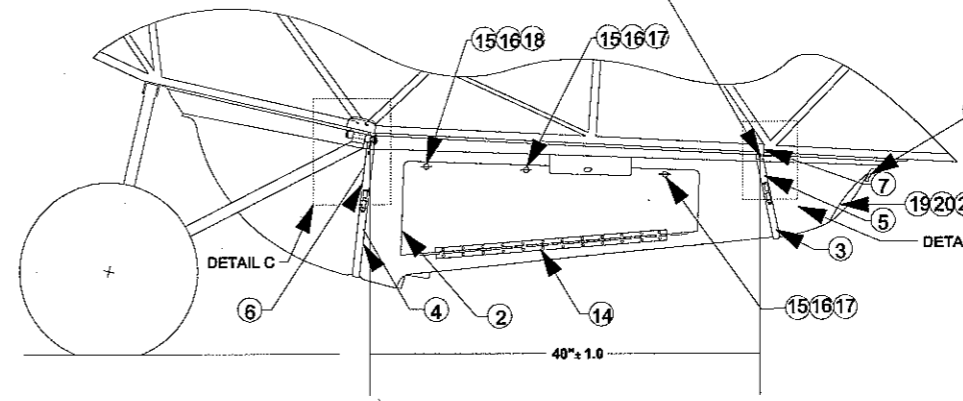


AN365-1032 NUT & AN960-10 WASHER

DETAIL A

LANDING GEAR STEP ASSY. MUST BE REMOVED (IF PRESENT)

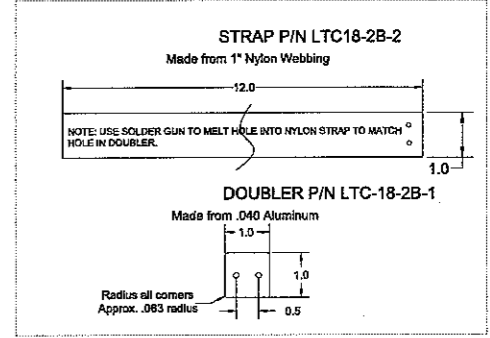
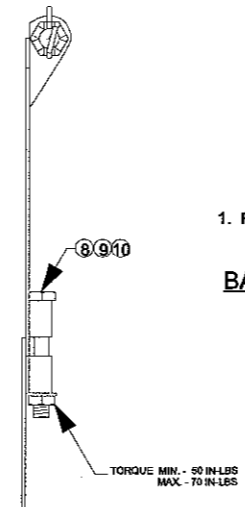
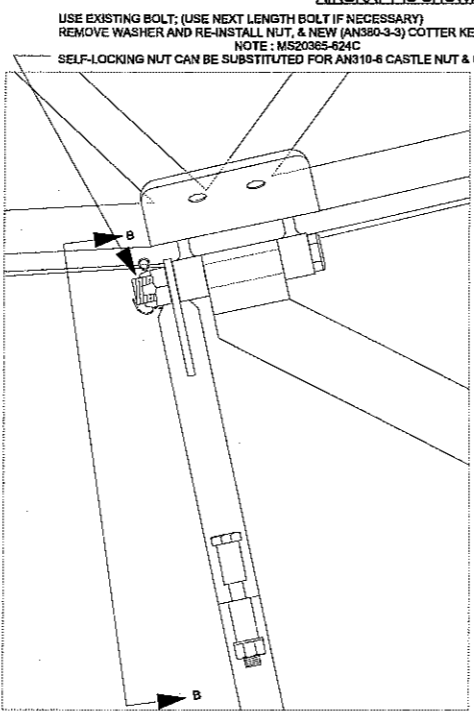
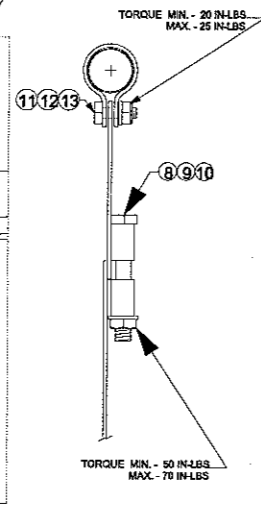
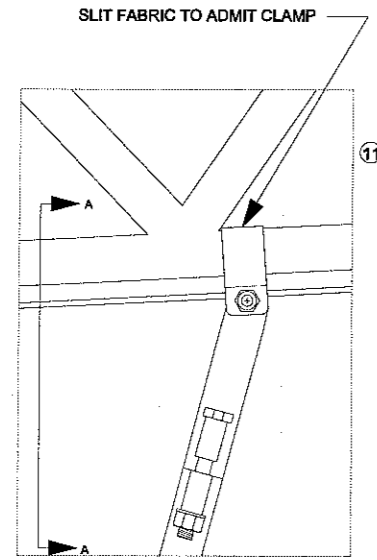
DETAIL B



REVISIONS			
LTR	DESCRIPTION	DATE	APRVD
A	ADDED STRAP AND DOUBLER PART NUMBERS LTR	4/24/12	CDB

NOTE: FOR REAR DOOR STRAP PARTS SEE DETAIL E

AIRCRAFT IS SHOWN RESTING ON THE GROUND WITH 8.50 x 6 TIRES INSTALLED

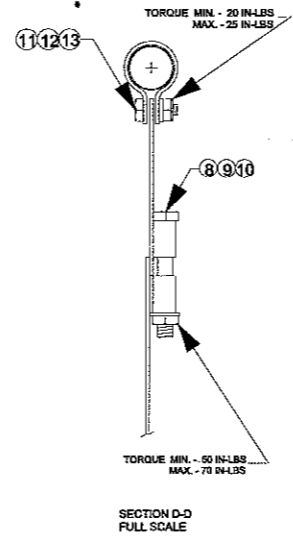
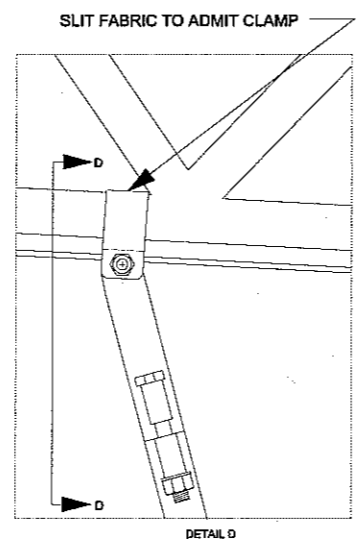
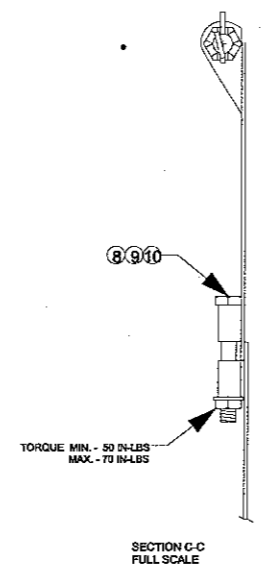
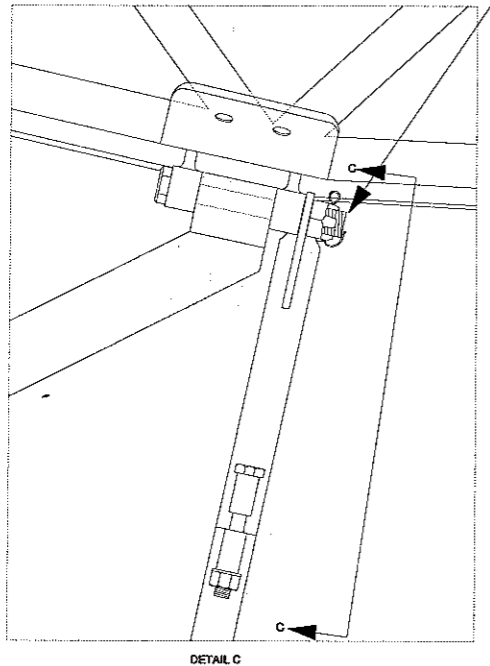


NOTES

1. FOR INSTALLATION ON FLOATS SEE AIRGLAS INSTALLATION MANUAL LC18/LTC18-105 (SEC. 5.2)

BAGGAGE COMPARTMENT IS LIMITED TO A MAXIMUM OF 169 LBS

USE EXISTING BOLT; (USE NEXT LENGTH BOLT IF NECESSARY) REMOVE WASHER AND RE-INSTALL NUT, & NEW (AN360-3-3) COTTER KEY. NOTE: MS20365-524C SELF-LOCKING NUT CAN BE SUBSTITUTED FOR AN310-6 CASTLE NUT & COTTER KEY.



NO.	QTY	CODE IDENT. NO.	PART NUMBER	DESCRIPTION	STOCK SIZE	MATERIAL	MATERIAL SPEC.	UTS 1000	FINISH	CALC. UNIT	ACT. WT	ZONE
21	2		LTC18-2B-2	STRAP								
20	2		LTC18-2B-1	DOUBLER								
19	1		LTC18-2B	REAR DOOR								
18	4		SSA-200	SPRING								
17	2		SSA-250	SPRING								
16	3		GAS-375	GROMMET								
15	3		AJ5-45	STUD, DZUS								
14	1		MS20257P2	HINGE								
13	2		AN365-1032	NUT								
12	2		AN960-10	WASHER								
11	2		AN3-4A	BOLT								
10	4		AN365-428	NUT								
9	4		AN960-416	WASHER								
8	4		AN4-24A or MS90727-16	BOLT								
7	2		LTC18-8	CLAMP								
6	2		LTC18-8	STRAP ASSY.								
5	2		LTC18-5	STRAP ASSY.								
4	1		LTC18-1214-4	STRAP ASSY.								
3	1		LTC18-1214-3	STRAP ASSY.								
2	1		LTC18-2	DOOR								
1	1		LC18-1214-1	CARGO POD								
X	1		LC18-1214	POD KIT								

LIST OF MATERIALS

UNLESS OTHERWISE SPECIFIED DIMENSIONS ARE IN INCHES

DECIMALS: X ± .1, .01 ± .01, .001 ± .010
 ANGLES: X ± .1, X ± .2

HEAT TREAT: PA-14, PA-12
 MATERIAL: STEEL, ALUM., MAG. CAST
 GOV. SPEC.: MIL.-H-6875, MIL.-H-5068, MIL.-H-6857

CONTRACT NO. _____
 SPEC. CONTROL NO. _____

Approved by: CED
 Checked by: CED
 Drawn by: JDH
 Date: 28 Jun 2011

Scale: NOTED

Airglas, Inc.
 Anchorage, Alaska

LC18-1214
CARGO POD
INSTALLATION

Sheet 1 OF 1