

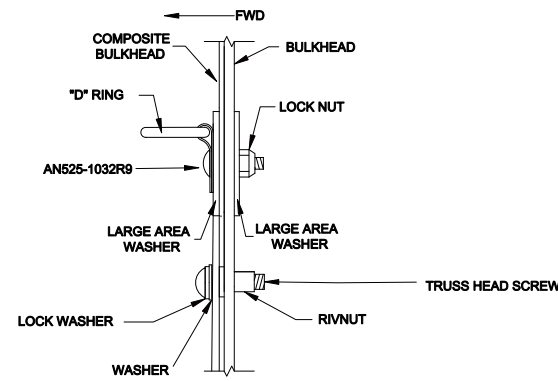
**CESSNA 180 SERIES**

**EXTENDED BAGGAGE, INSTALLATION DWG.**

SCALE	CH. BY JLP	TOLERANCES:		
NOT TO SCALE	DATE 5-13-02	±3° ± <sup>1</sup> / <sub>8</sub>		
DR. BY JDP	APP. BY			
DATE 5-13-02	DATE			
NO. REQD	PART NO.	SIZE	DESCRIPTION	SPEC.

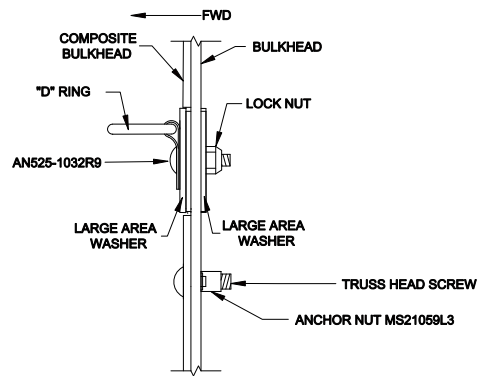
**NOTES:**

1. BILL OF MATERIALS LISTED ON SHEET 1.



**SECTION B-B**

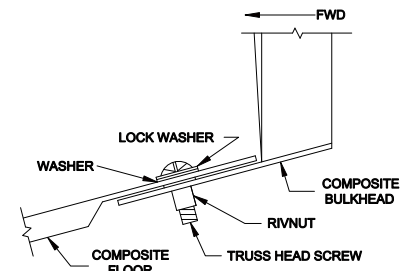
"D" RING INSTALLATION  
THROUGH BULKHEAD  
STA. 140



**SECTION B-B**

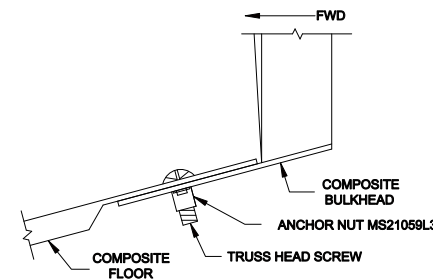
"D" RING INSTALLATION  
THROUGH BULKHEAD  
STA. 140

**OPTIONAL INSTALLATION**



**SECTION C-C**

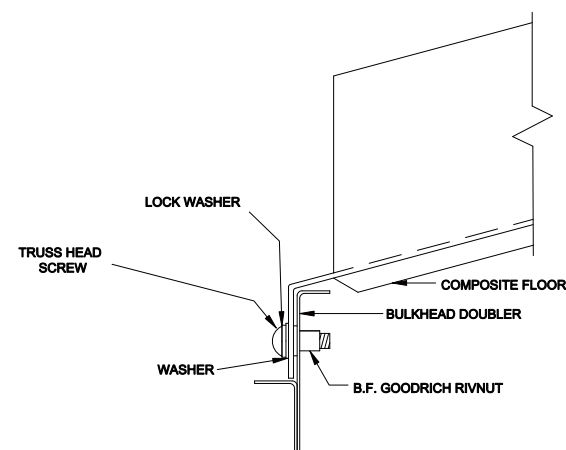
COMPOSITE BULKHEAD  
TO COMPOSITE FLOOR



**SECTION C-C**

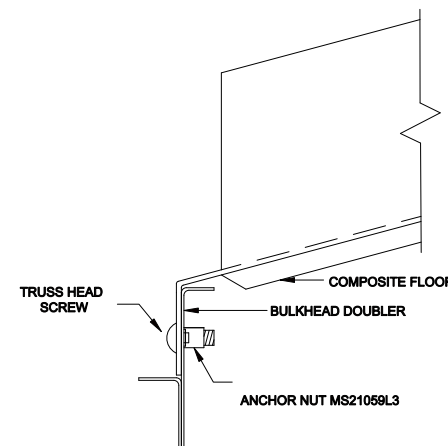
COMPOSITE BULKHEAD  
TO COMPOSITE FLOOR

**OPTIONAL INSTALLATION**



**SECTION D-D**

COMPOSITE FLOOR TO BULKHEAD ASSEMBLY F.S. 108



**SECTION D-D**

COMPOSITE FLOOR TO BULKHEAD ASSEMBLY F.S. 108

**OPTIONAL INSTALLATION**

CHG.LET.	CHANGES	BY	DATE
B	REPLACED EYEBOLT WITH "D" RING	JDH	7 DEC 12
A	ADDED OPTIONAL INSTALLATION	JDP	5-13-02
REVISIONS			