

**THIS MANUAL INCLUDES INFORMATION PROPRIETARY TO
AIRGLAS, INC. AND SHALL NOT BE USED TO MANUFACTURE OR
REPRODUCE WITHOUT PERMISSION OF AIRGLAS, INC.**

INSTALLATION, MAINTENANCE, SERVICE INSTRUCTIONS & ILLUSTRATED PARTS LIST

AIRGLAS ®

**MODEL L20500 Ski Kit
for
Sikorsky UH60A, J, L, M MH60G, K, L Helicopters**

CODE INDENT. NO. 17564

AIRGLAS MANUAL NO. L20500

AIRGLAS, INC.

.....

LOG OF REVISIONS

| Revision No. | Pages Affected | Description | Date |
|--------------|----------------|--|----------------|
| Initial Rel. | 1 – 41 | Original | June 18, 1995 |
| 1 | 37, 39 | Index no. 7, 8, 9, 15 on page 37 part no. changed. Index no. 2, 7, 8 on page 39 part no. changed. | Jan. 31, 1997 |
| 2 | | | March 22, 2002 |
| 3 | | Added repair appendix | 15 Nov, 2012 |
| 4 | | Changed torque requirement for (L20500-7-3) Outboard Axle Adapter Shaft | 1 Jul, 2016 |

TABLE OF CONTENTS

1 Main/Tail Landing Gear Skis 1

1.1 Main Landing Gear Adaptor Kit..... 2

Figure 1, 1.1 Main Landing Gear Adaptor Kit – Install/Remove 3

Figure 2, 1.1 Main Landing Gear Adaptor Kit – Shim Installation 4

1.2 Main Landing Gear Ski – Install/Remove..... 5

Figure 3, 1.2 Main Landing Gear Ski – Install/Remove 6

Figure 4, 1.2 Main Landing Gear Ski – Install/Remove..... 7

Figure 5, 1.2 Main Landing Gear Ski – Install/Remove..... 8

1.2 Main Landing Gear Ski – Install/Remove 9

1.3 Tail Landing Gear Ski – Install/Remove 11

Figure 6, 1.3 Tail Landing Gear Ski – Install/Remove 12

Figure 7, 1.3 Tail Landing Gear Ski – Install/Remove 13

1.4 Main/Tail Landing Gear Ski – Types of Damage..... 14

1.5 L20500 Ski Kit Parts List 15

1.5.1 Illustrated Main Ski (Right & Left) 16

1.5.2 Illustrated Tail Ski 17

1.5.1 Right & Left Main Ski Parts List 18

1.5.2 Tail Ski Parts List 18

1.5.3 Illustrated Main Landing Gear Adaptor Kit..... 21

1.5.3 Main Landing Gear Adaptor Kit Parts List 22

1.5.4 Illustrated Spring Cylinder, Main Ski 23

TABLE OF CONTENTS

1.5.4 Spring Cylinder, Main Ski Parts List 24

1.5.5 Illustrated Spring Cylinder, Tail Ski 25

1.5.5 Spring Cylinder, Tail Ski Parts List.....26

1.5.6 Illustrated Tail Wheel, Main Ski 27

1.5.6 Tail Wheel, Main Ski Parts List 28

INITIAL SETUP PERSONNEL**REQUIRED**

- One: MOS 67T – Tactical Transport Helicopter Repairer
- One: MOS 68G – Aircraft Structural Repairer
- Six: - Assistants

MATERIALS/PARTS

- Abrasive Paper, 80-Grit
- Adaptor Kit, L20500-7
- Adhesive, EA956
- Cheesecloth, CCC-440
- Corrosion Preventative Compound, MIL-C-16173D, Grade 2
- Cotter Pin
- Dry Cleaning Solvent, P-D-680 Type II
- Foam 6 x 6 x 6 inches
- Furane Epoxy Resin Coating
- Lubriplate, 630AA
- Methyl Ethyl Ketone, TT-M-261
- Non-Metallic Scraper, (Locally Made)
- Rag, Clean, DDD-T-541
- Safety wire
- Sealing Compound, MIL-S-81733
- Ski Repair Kit
- Teflon Urethane Coating
- Wood, 1 x 3 x 16 inches

TOOLS

- Aircraft Mechanic's Toolkit
- Drill Bit, 3/4- inch
- Drill Bit, 11/64- inch
- Feeler Gage
- Sander or Sanding Block
- Torque Wrench, 100 – 500 ft. lbs., GGG-W-686
- Torque Wrench, 0 – 600 in. lbs, GGG-W-686

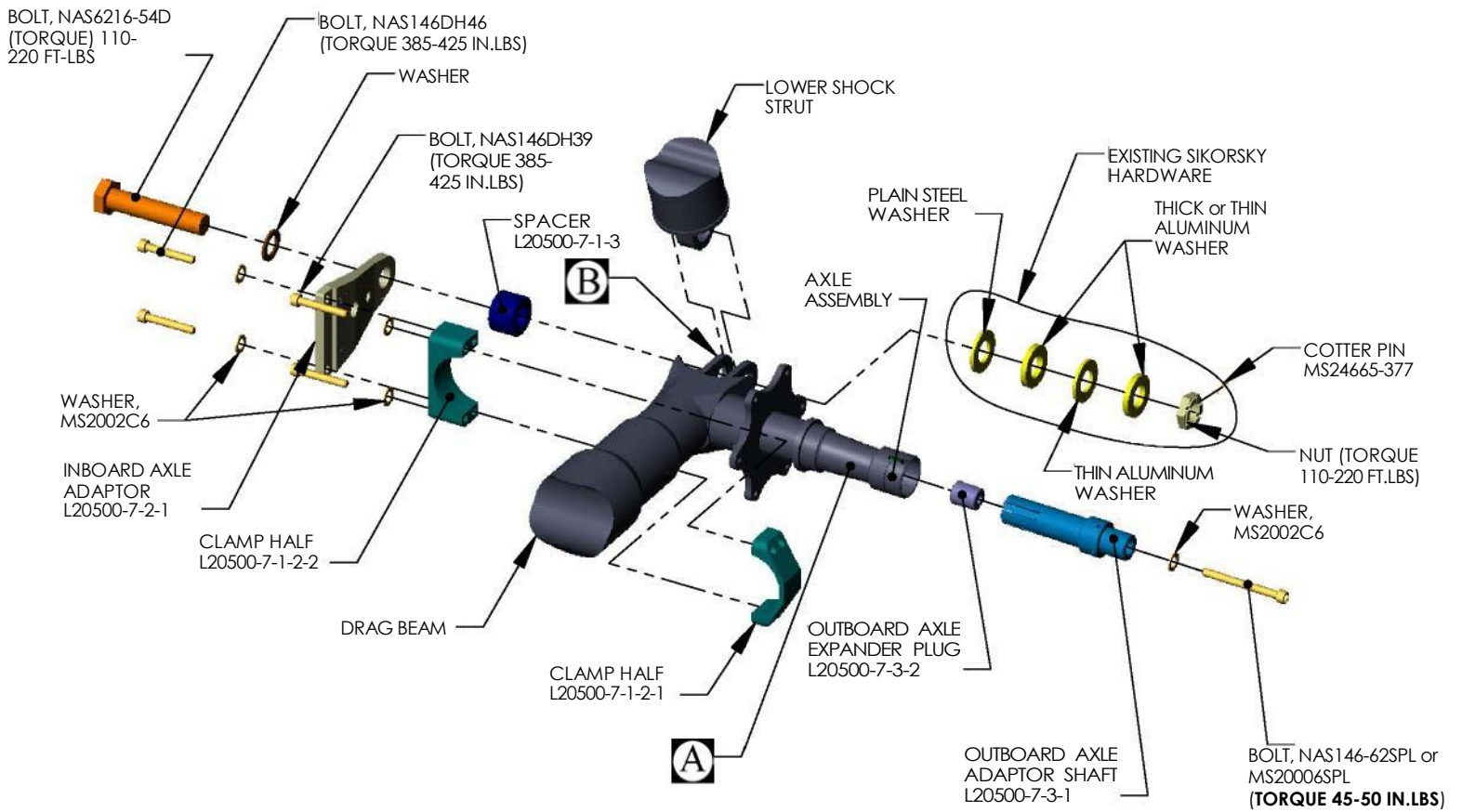
INSTALL

NOTE

Install is the same for both sides. Each bracket is labeled left or right.

- a. Remove tow plate fairing (1H-60(M)G-2-2). Retain hardware.
- b. Remove tow plate (1H-60(M)G-2-2).
- c. Remove main landing gear cutter ((1H-60(M)G-2-2).
- d. Install step and spacer using existing bolts (1H-60(M)G-2-2).
- e. Install existing bolts and spacer in place of tow plate (1H-60(M)G-2-2).
- f. Jack aircraft at forward jack points (1H-60(M)G-2-2).
- g. Relocate lower aft brake line clamp forward to base of next chamfer.
- h. Support drag beam for alignment and remove bolt, washers, and nut holding lower end of shock strut to drag beam (Figure1, page 3).
- i. Loosely install clamp to drag beam using short bolts and washers (Figure 1, page 3).
- j. Position inboard axle adaptor on clamp and drag beam. Install long bolts and washers in aft clamp holes (Figure 1, page 3).
- k. Position spacer between axle adaptor and drag beam and install bolts through axle adaptor, spacer and drag beam strut. Install washer and nut (Figure 1, page 3).
- l. Snug up all bolts
- m. Using feeler gage, measure gap between axle adaptor and drag beam (Figure 2, page 4 Detail B). MAXIMUM GAP ALLOWED 0.011 INCH.
- n. If gap exceeds maximum allowed, remove bolts, washers, spacer and axle adaptor and shim until proper gap is obtained. Rivet shims to adaptor.
- o. Position inboard axle adaptor on clamp. Install long bolts and washers in axle adaptor and clamp (Figure 1, page 3).
- p. Position spacer between axle adaptor and drag beam. Install bolt, through axle adapter, spacer, drag beam strut. Install washer and nut (Figure 1, page 3).
- q. TORQUE LONG AND SHORT BOLTS EVENLY ON CLAMP AND AXLE ADAPTOR TO 385-425 INCH-POUNDS.
- r. Safety wire bolts.
- s. Remove bolt, washers and nut from axle adaptor and drag beam.
- t. Bolt shock strut to drag beam as follows: Refer to (Figure 1, page 3).
 - 1) Install countersunk washer on bolt with countersunk side toward head.
 - 2) Install bolt with head inboard.
 - 3) Install plain steel washer on bolt.
 - 4) Install thick aluminum washer on bolt.
- u. Remove the foam in main gear axles to a depth of 5.2" (inside of axle must be clean). Install outboard axle adaptor shaft, making sure to align the cotter pin hole. Torque the attaching NAS146-62SPL / MS20006SPL bolt to **45-50 in.-lbs.** (Figure 1, page 3).

Caution: Avoid overtightening NAS146-62SPL /MS20006SPL bolt, it could cause deformation of axle.



A

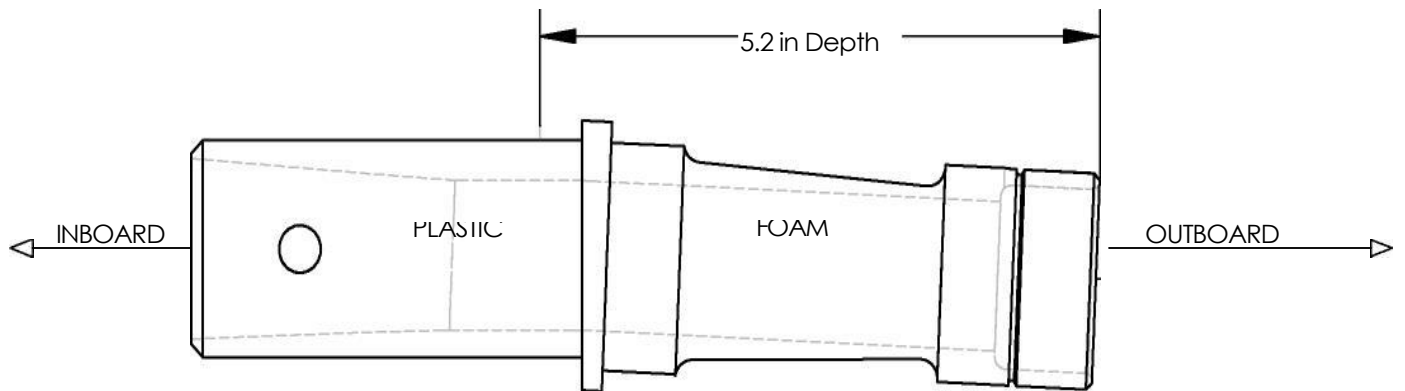


Figure 1
Page 3

B

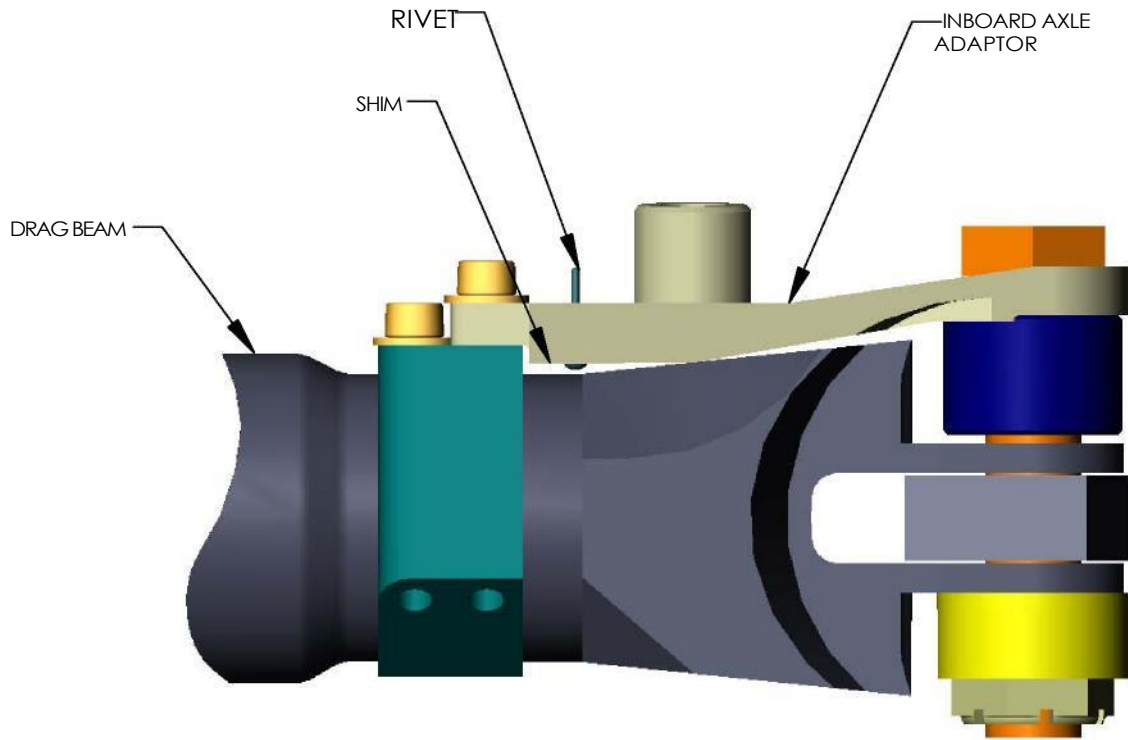


FIGURE 2
4
AIRGLAS, INC.
ANCHORAGE, AK 99519

| |
|---|
| <p>MAIN LANDING GEAR SKI - INSTALL</p> |
|---|

Installation of both skis (fixed and hinged) is the same except where noted.

- a. Remove paint in and around pivot pin on drag beam and drag beam support (Figure 3, page 6, Detail A).
- b. Lubricate mounting pin on upper mounting bracket using Lubriplate, 630AA.
- c. Install upper mounting bracket into pivot pinhole.
- d. Using bolt, install retaining clamp to upper mounting bracket (L20500-9/10) (Figure 3, page 6, Detail A).

| |
|-----------------------|
| <p>CAUTION</p> |
|-----------------------|

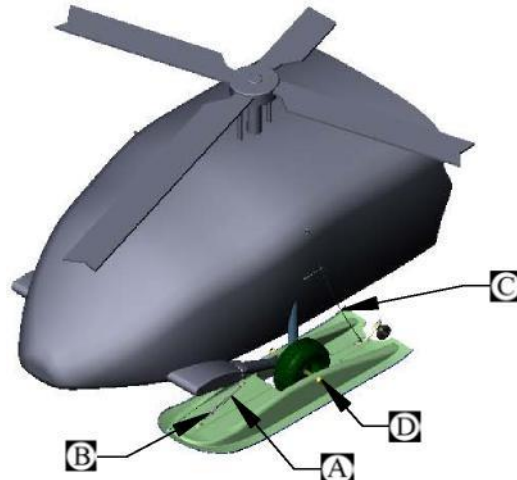
Damage to retaining clamp and cap screw will occur if cap screw is over-tightened. Use care when tightening cap screws.

- e. Adjust the clearance between the mounting bracket and the lower aft edge of the sponson. Tighten cap screw until mounting is snug against sponson (Figure 3, page 6 Detail A). **TORQUE JAMNUT TO 75 – 85 INCH-POUND.**
- f. Install spring cylinder to upper mounting bracket with eyebolt, washers, special washers, and nut. Ensure bolt head is on inboard side (Figure 3, page 6, Detail A). **TORQUE NUT TO 100-140 INCH POUNDS.** Install cotter pin.
- g. Install inboard safety cable to eyebolt with clevis pin and cotter pin. (Figure 3, page 6, Detail A).
- h. Temporarily secure spring cylinder to sponson with safety tab holding main ski tail wheel assembly to ski and remove tail wheel assembly (Figure 4, page 7).
- i. Remove bolts, washers, nuts and rear safety tab holding main ski tail wheel assembly to ski and remove tail wheel assembly. (Figure 4, page 7).
- j. Place a 1 x 3 x 16 inch piece of wood under rear edge of wheel well. **Skis must be supported along the aft edge of the skis, and the aft portion of the wheel well opening. Failure to support the ski could result in stress cracks.**

| |
|-----------------------|
| <p>CAUTION</p> |
|-----------------------|

To avoid damage to ski tunnels take extreme care to ensure that the wheels are on the outboard part of the wheel wells.

- k. Tow helicopter, (1H-6-(M) G-2-1), or push helicopter forward with help of assistants until main wheels are centered in ski wheel well.



A

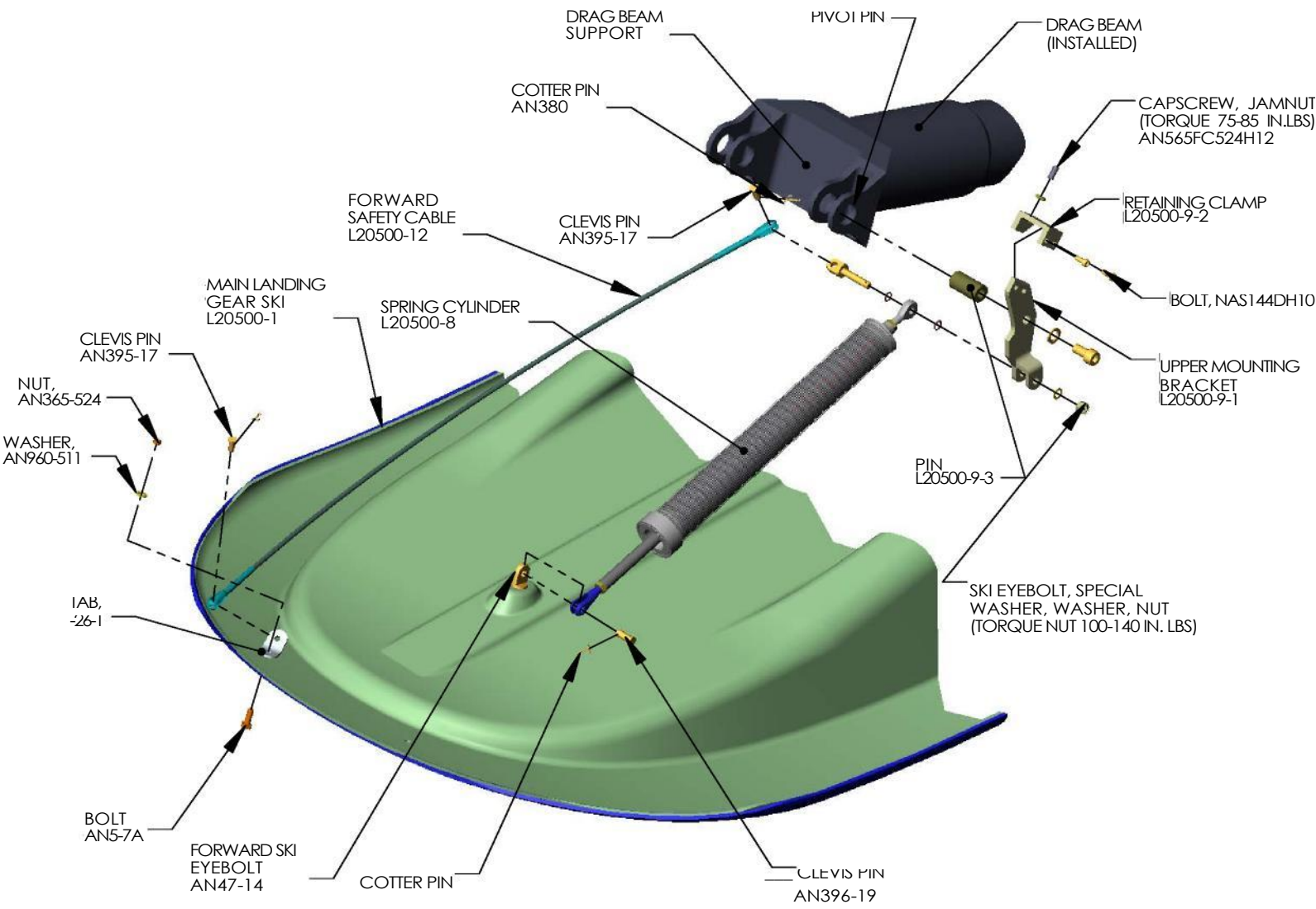
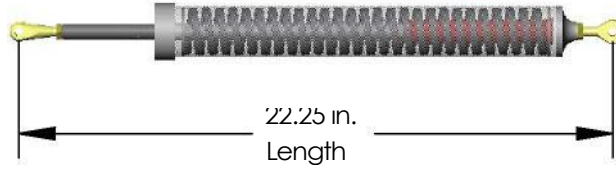


FIGURE 3
6
AIRGLAS, INC.
ANCHORAGE, AK 99519

B



C

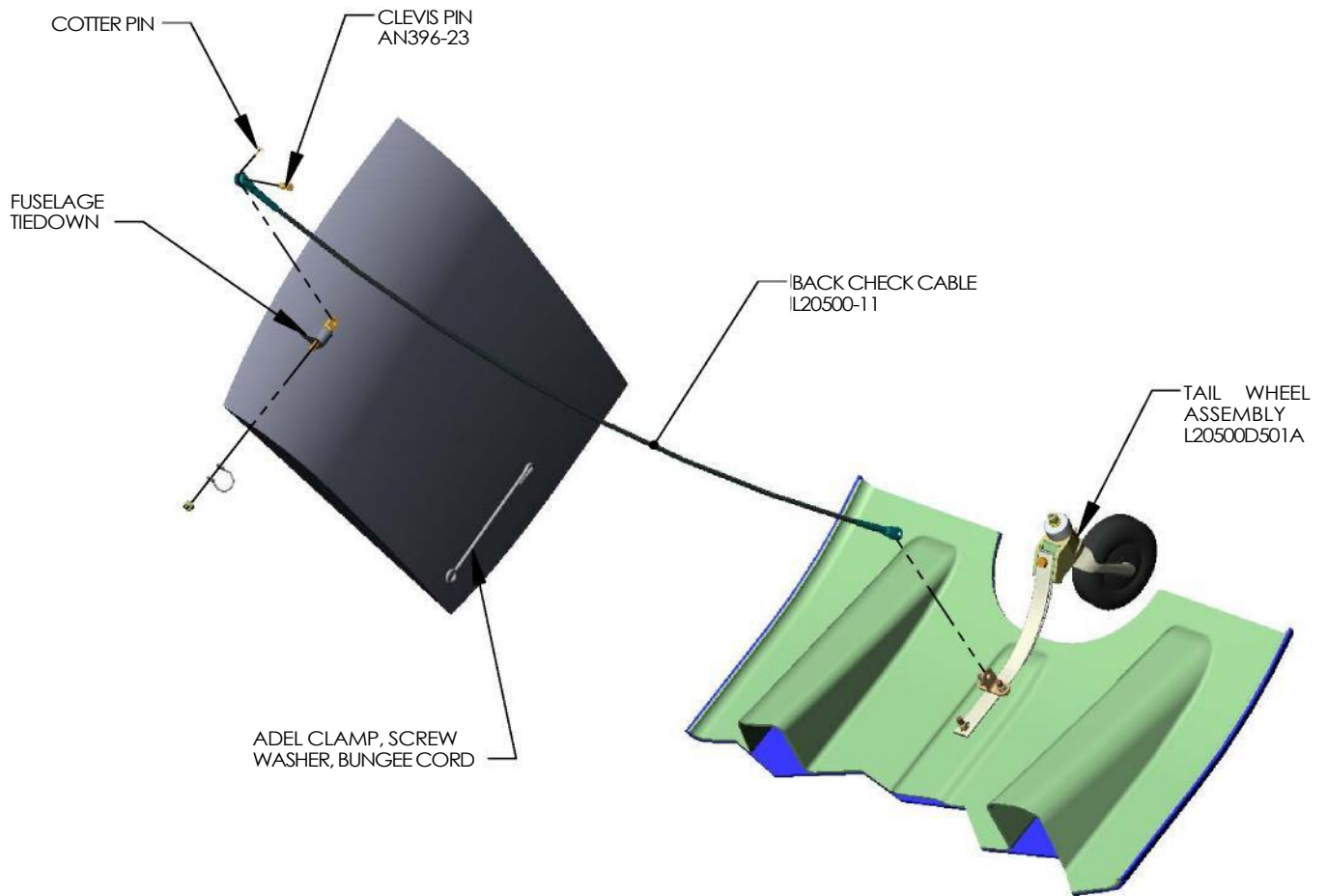


FIGURE 4
7
AIRGLAS, INC.
ANCHORAGE, AK 99519

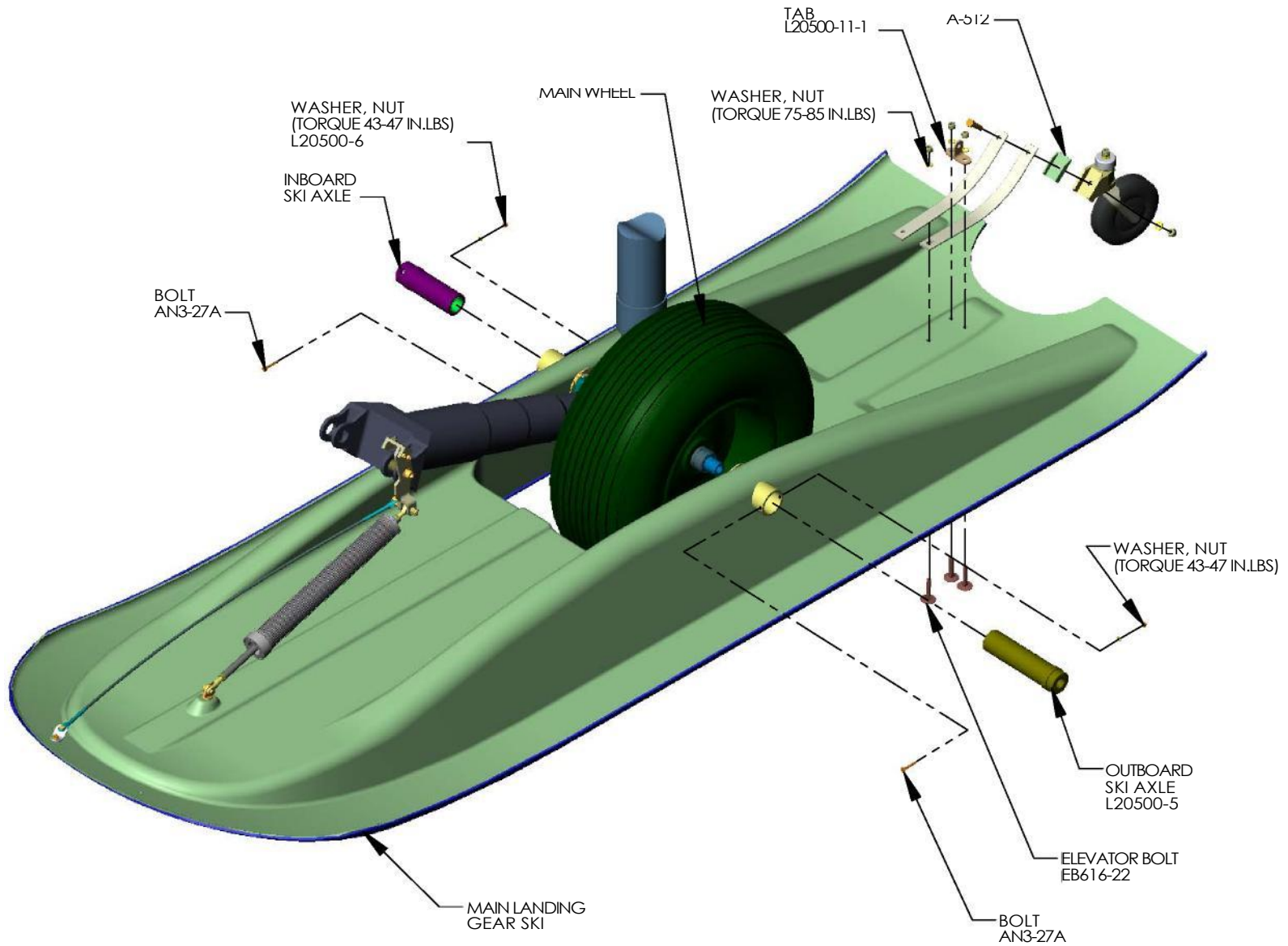


FIGURE 5
8
AIRGLAS, INC.
ANCHORAGE, AK 99519

1. Remove wood, from aft portion of wheel well and back of ski.
- m. Install tail wheel assembly and rear safety cable to ski using bolts, washers, table and nuts. Ensure bolts are flush with bottom of ski (Figure 4, page 8). TORQUE NUTS TO 75 – 85 INCH-POUNTS
- n. Lubricate ski axle with thin coat of Lubriplate, 630AA.

NOTE

Do not extend spring cylinder beyond its present length of 22-1/4 inches.

- o. Install spring cylinder on forward ski eyebolt with clevis pin and cotter pin (Figure 3, page 6) and upper mounting bracket.
- p. Attach ratchet-type cargo strap to aft edge of ski and wrap around oleo. Tighten strap until ski axles align with axle adapter.
- q. Insert outboard ski axle into ski and thread ski axle into axle adapter (Figure 4, page 7, Detail B).
- r. Thread inboard and outboard ski axles until both are evenly seated on axle adapter.
- s. Back off inboard and outboard ski axles until bolt holes line up.
- t. Install bolts through inboard and outboard axles and ski (Figures 5, page 8). Install washers and nuts on bolts. TORQUE NUTS TO 43 – 47 INCH-POUND.
- u. Install rear check cable to fuselage tie down fitting eyebolt using clevis pin and cotter pin. (Figure 5, Page 8).

NOTE

Longer screw may be required to install Adel clamp.

- v. Remove center screw and washer from ESSS access door on support fairing at STA 303.4. Install Adel clamp and bungee cord on safety cable to access door using screw and washer (Figure 4, page 7).
- w. Install inboard safety cable to ski bolt, washer and nut (Figure 3, page 6).

REMOVAL OF MAIN SKI

- x. Remove bolt, washer and nut holding inboard safety cable to ski (Figure 3, page 6).
- y. Remove clevis pin and cotter pin holding inboard safety cable to ski eyebolt (Figure 3, Page 6).
- aa. Remove inboard safety cable.
- bb. While lifting forward edge to ski to relieve tension on the spring cylinder, remove eyebolt, washers, special washers and nut holding spring cylinder to upper mounting bracket (Figure 3, page 6).
- cc. Remove clevis pin and cotter pin holding spring cylinder to ski (Figure 3, page 6, Detail A).
- dd. Remove spring cylinder.
- ee. Remove screw and washer holding Adel clamp to ESSS fairing and remove clamp and bungee cord (Figure 5, page 8, Detail D). Reinstall screw and washer.
- ff. Remove clevis pin and cotter pin holding rear safety cable to fuselage tie down fitting and remove cable (Figure 5, page 8).

- gg. Place a 6-inch foam pad 12 inches from front of ski.
- hh. Remove bolts, washers and nuts from ski axles (Figure 4, page 7, Detail B).
- ii. Unscrew and remove ski axles from axle adapters.
- jj. Remove bolts, washers, nuts, and tab on rear safety cable from tail wheel assembly (Figure 5, page 8).
- kk. Remove tail wheel assembly and rear safety cable.
- ll. Remove foam pad from under ski
- mm. Place a 1x3x16 inch wood block under read edge of wheel well.
- nn. Remove retaining clamp.
- oo. Remove upper mounting bracket from pivot pin (Figure 3, page 6, Detail A).
- pp. Remove Lubriplate from pivot pin with cheesecloth moistened with dry-cleaning solvent, P-D 680, Type II.
- qq. Touch up paint as required (1H-60(M)G-2-2).

CAUTION: Skis must be supported along the aft edge of the skis, and the aft portion of the wheel well opening. Failure to support the ski could result in stress cracks.

| |
|----------------|
| CAUTION |
|----------------|

- mm. Tow helicopter (1H-60(M)G-2-1 or push helicopter rearward until the wheel has cleared rear of ski.
- nn. Reinstall tail wheel assembly on ski using bolts, washers and nuts (Figure 4, page 7, Detail B).

NOTE

REMOVAL OF L20500-9/10 Upper Mount Bracket

NOTE: Remove of the upper mounting bracket is optional

- pp. Loosen jamnut on cap screw (Figure 3, page 6, Detail A).
- qq. Loosen cap screw on remaining clamp. Remove bolt holding retaining clamp to upper mounting bracket (Figure 3, page 6, Detail A).

INSTALLATION OF TAIL SKI

- a. Remove jack pad from tail wheel yoke (1H-60(M)G-2-3).
- b. Install attachment fitting on spring cylinder into jack pad mounting hole using existing and washer (Figure 6, page 13, Detail A). TORQUE BOLT TO 105 – 115 INCH-POUNDS.
- c. Remove bolts, washers and nuts holding ski tail wheel to ski (Figure 7, page 14, Detail C).
- d. Remove tail wheel assembly.
- e. Have assistant hold ski so rear portion is centered in front of tail wheel.
- f. Slowly tow (1H-60(M)G-2-1) or push helicopter forward until tail wheel is centered in wheel well of ski.
- g. Remove tow bar, if installed (1H-60-(M)G-2-1).
- h. Lubricate ski axles with Lubriplate, 630AA.
- i. Lift ski until it aligns with tail wheel axle.
- j. Install ski axle adaptors through attach brackets (Figure 7, page 14, Detail B).
- k. Install bolt through attach bracket and axle adaptor and install nut (Figure 7, page 14, Detail B). TORQUE NUT TO 43 – 47 INCH-POUNDS.
- l. Install tail wheel assembly to ski using bolts, washers and nuts (Figure 7, page 14, Detail C). TORQUE NUT TO 75 – 85 INCH POUNDS.
- m. Safety wire bolt.

- n. Attach safety cable to eyebolt securing spring cylinder to attach fitting using clevis pin and cotter pin (Figure 6, page 13, Detail A).

REMOVAL OF TAIL SKI

- o. Remove clevis pin and cotter pin attaching safety cable to eyebolt securing spring cylinder to attachment fitting (Figure 6, page 13, Detail A).
- p. Remove safety cable.
- q. Remove bolt and washer holding spring cylinder attachment fitting to jack pad mounting (Figure 6, page 13, Detail A).
- r. Remove spring cylinder.
- s. Remove bolts, washers and nuts holding ski axles (Figure 7, page 14, Detail B).
- t. Remove tail wheel.
- u. Remove bolts, washers nut holding ski axles (Figure 7, page 15, Detail B).
- v. Remove ski axles from tail wheel axle.
- w. Hold ski so that rear portion is parallel to ground behind tail wheel.
- x. Tow (1H-60(M)-G-2-3) or push helicopter rearward until tail wheel clears ski.
- y. Install jack pad (1H-7-(M)G-2-3).
- z. Install tail wheel assembly using bolts washers and nuts (Figure 7, page 14, Detail C).
- aa. Remove tow bar, if installed (1H-60(M)G-2-1).

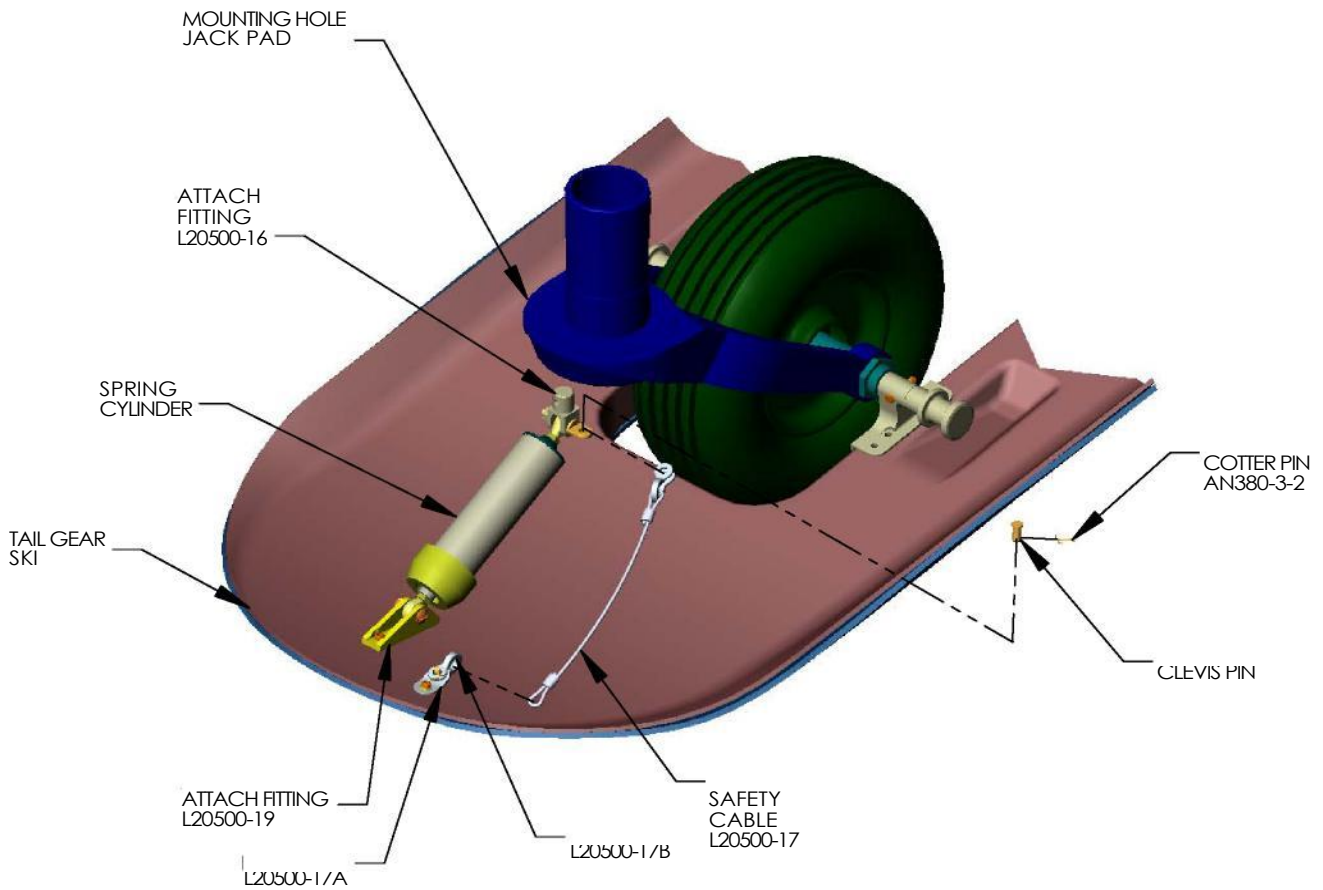
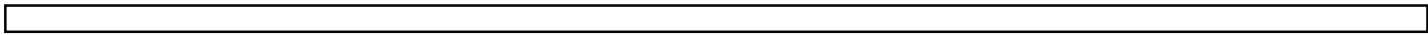
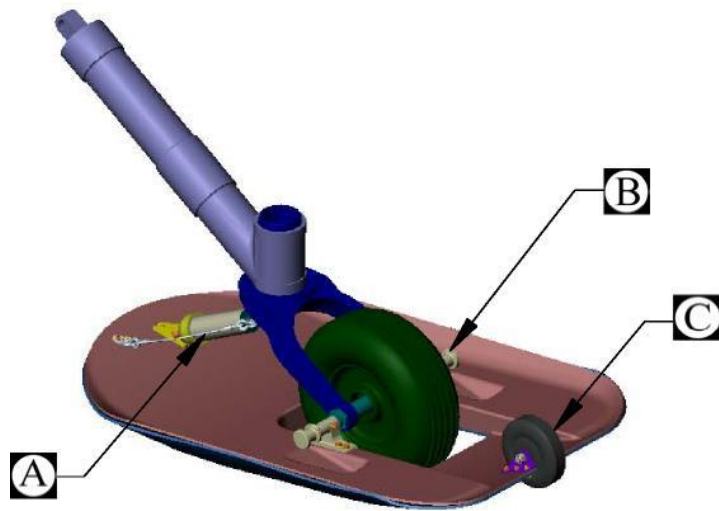


FIGURE 6
12
AIRGLAS, INC.
ANCHORAGE, AK 99507

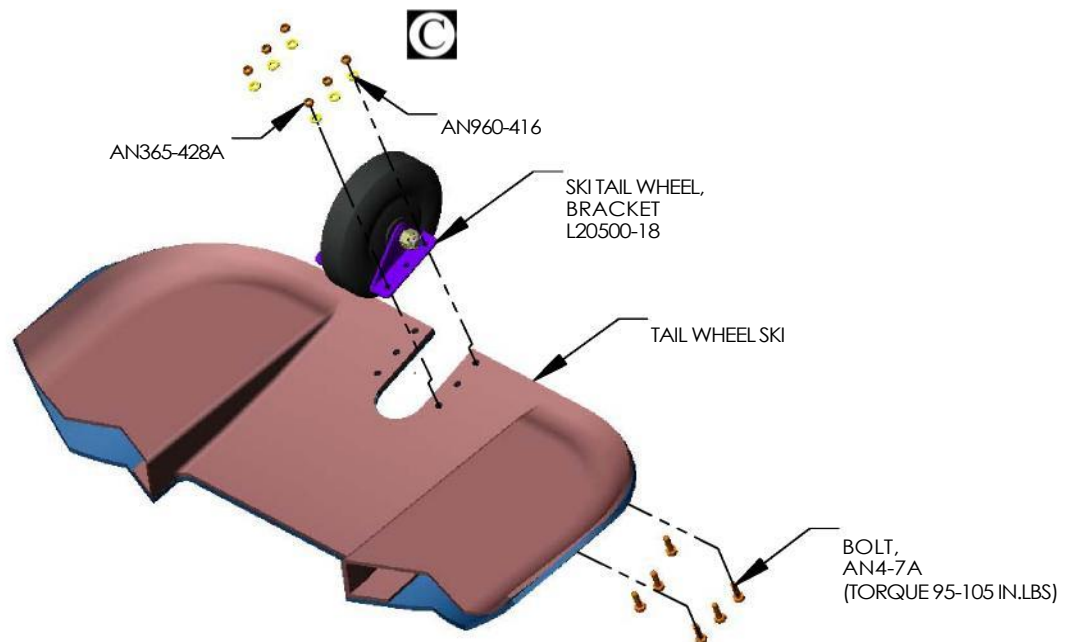
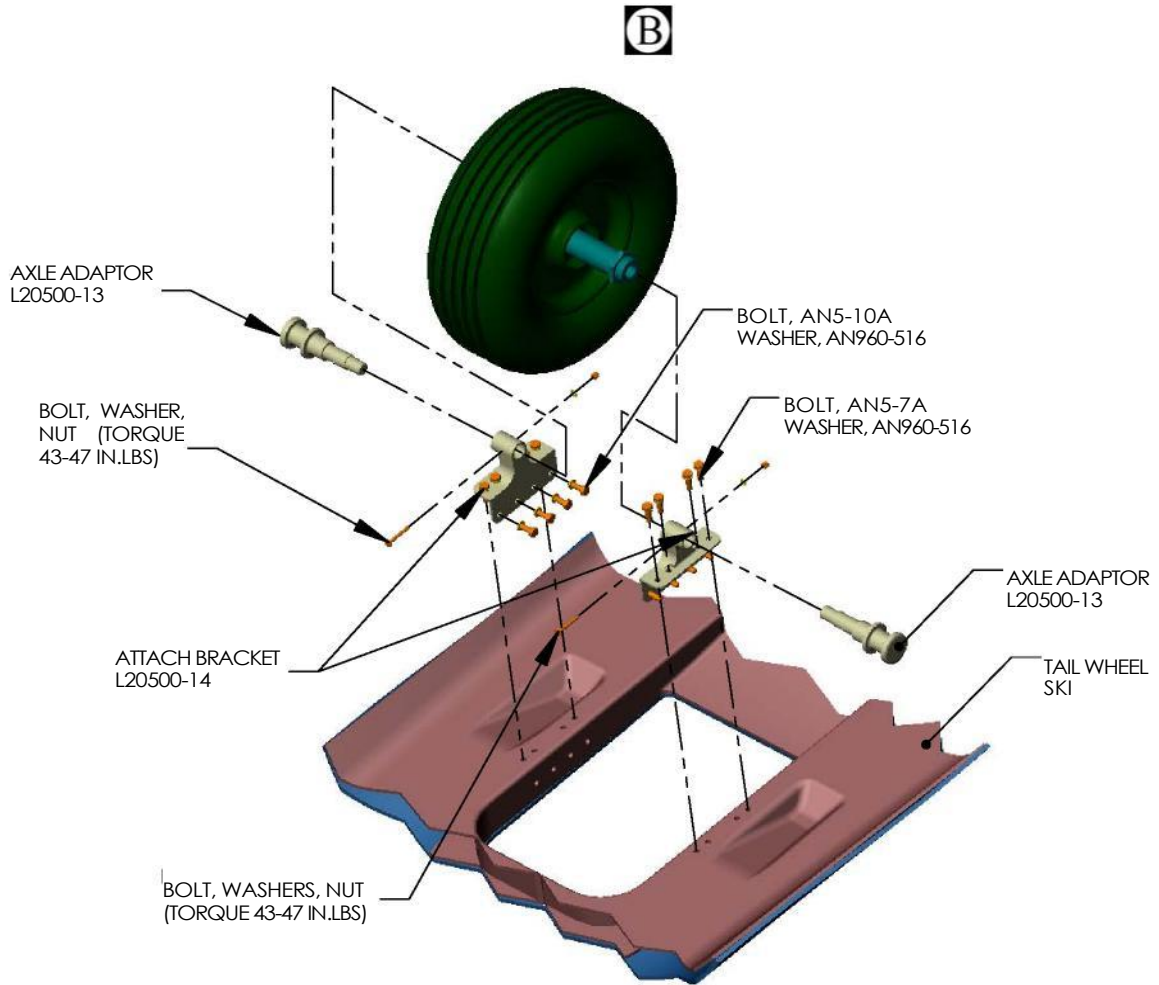
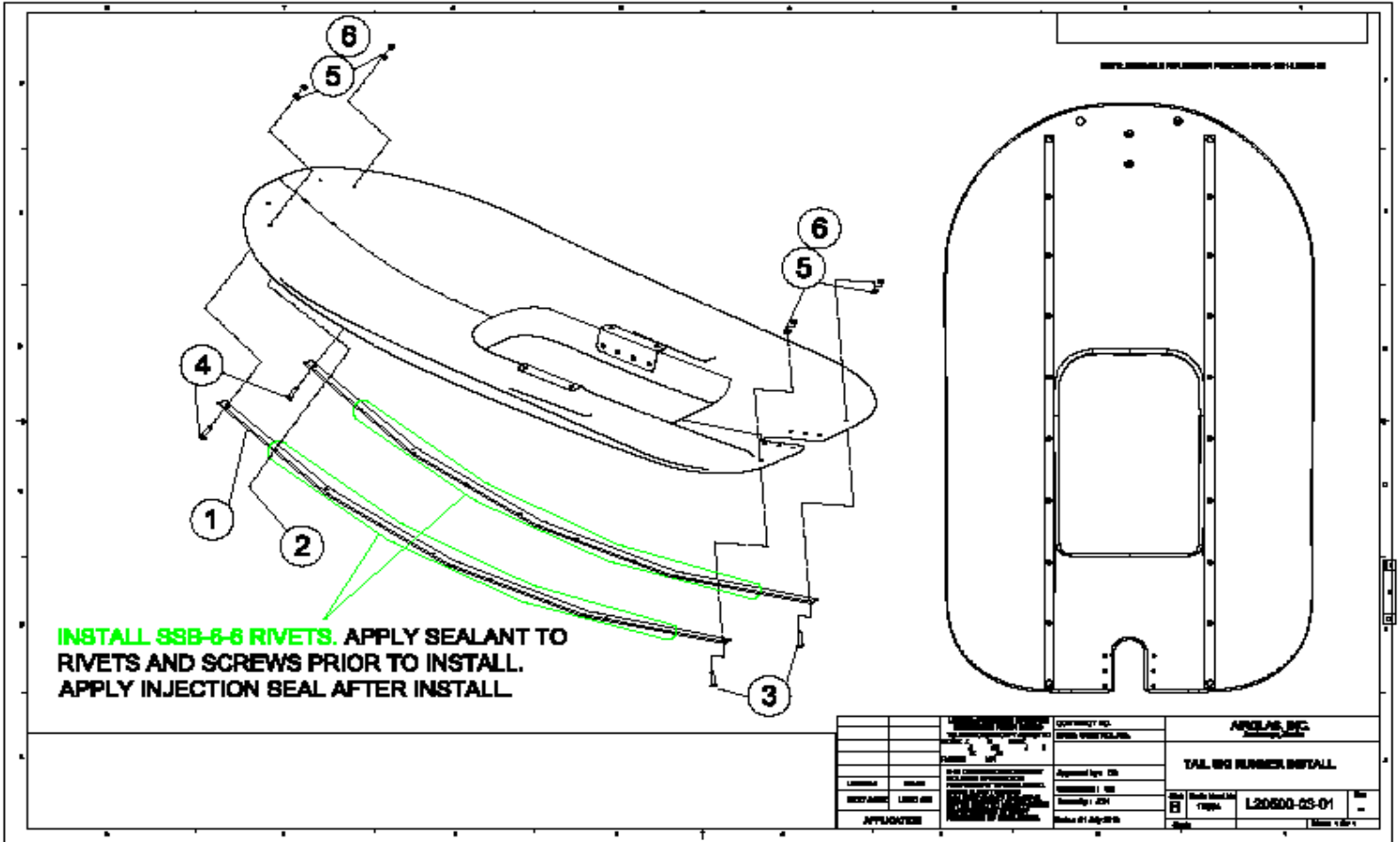


FIGURE 7
13
AIRGLAS, INC.
ANCHORAGE, AK 99507



L20500-3 TAIL SKI RUNNER INSTALLATION.

| Re NO. | QTY | CODE IDENT NO. | PART NUMBER | DESCRIPTION | STOCK SIZE | MATERIAL | MATERIAL SPEC. | WEIGHT-LBS | FINISH | ZONE |
|--------|-----|----------------|--------------|------------------|------------|----------|----------------|------------|--------|------|
| 6 | 4 | | MS21044N4 | NUT | | | | | | |
| 5 | 4 | | AN960-416L | WASHER | | | | | | |
| 4 | 2 | | AN509-416R14 | SCREW | | | | | | |
| 3 | 2 | | AN509-416R12 | SCREW | | | | | | |
| 2 | 16 | | SSB6-6 | RIVET | | | | | | |
| 1 | 2 | 17564 | L20500-43 | RUNNER, TAIL SKI | | | | | | |

NEGLIGIBLE DAMAGE

Small nicks, scratches or abraded area on bottom of ski.

REPAIRABLE DAMAGE

- a. See Repair Appendix for details on allowable damage and procedures

NON-REPAIRABLE DAMAGE

- b. See Repair Appendix for details on non-repairable damages.

INSPECT

- c. See Repair Appendix for criteria

- d. Inspect bottom surface for scratches or excessive wear.

BOTTOM REPAIR

- e. Using sander and abrasive paper, sand surface of ski until smooth. Wipe clean using a clean rag.

WARNING

Epoxy resin is flammable and toxic. Good general ventilation is normally adequate. Skin and eye protection is required. Avoid all sources of ignition.

- f. Apply coating to surface of ski per instructions in ski repair kit. Allow to dry at room temperature for 24 hours.’
- g. Using sander or sanding block and abrasive paper, roughen epoxy resin coating. Wipe clean using a clean rag.

WARNING

Urethane coating is flammable and toxic. Good general ventilation is normally adequate. Skin and eye protection is required. Avoid all sources of ignition.

- h. Apply Teflon urethane coating to ski surface per instructions in ski repair kit. Allow to dry for 48 hours.

| | | |
|-------|------------------------------------|-------|
| 1.5.1 | Right & Left Main Ski | 18 |
| 1.5.2 | Tail Ski | 18 |
| 1.5.3 | Main Landing Gear Adaptor Kit..... | 20 |
| 1.5.4 | Spring Cylinder, Main Ski | .. 22 |
| 1.5.5 | Spring Cylinder, Tail Ski | 24 |
| 1.5.6 | Tail wheel, Main Ski | 26 |

RIGHT & LEFT MAIN SKI
TAIL SKI
PARTS LIST

| INDEX NUMBER | PART NUMBER | CODE IDENT. NO. | NOMENCLATURE | NUMBER REQUIRED |
|--------------|-------------|-----------------|---------------------------------------|-----------------|
| 1 | L20500 | 17564 | Basic Ski Molding | 2 |
| 2 | L20500-1 | 17564 | Main Ski Assy. L.H. | 1 |
| 3 | L20500-2R | 17564 | Main Ski Assy. R.H. | 1 |
| 4 | L20500-03 | 17564 | Basic Ski Molded (Tail Ski) | 1 |
| 5 | L20500-3 | 17564 | Ski Axle Assy. | 1 |
| 6 | L20500-4 | 17564 | Ski Bushing Molded into L20500-01 | 4 |
| 7 | L20500-5 | 17564 | Ski Axle, Outboard | 2 |
| 8 | L20500-6 | 17564 | Ski Axle, Inboard | 2 |
| 9 | L20500-7 | 17564 | Ski Axle Adaptor Kit Main Skis | 1 |
| 10 | L20500-7-1 | 17564 | Inboard Axle Adaptor Assy. Skis | 1 |
| 11 | L20500-7-2 | 17564 | Outboard Axle Adaptor Assy. | 1 |
| 12 | L20500-7-3 | 17564 | Outboard Axle Adaptor Assy. | 2 |
| 13 | L20500-8 | 17564 | Spring Cylinder, Main Ski | 2 |
| 14 | L20500-9 | 17564 | Upper MTG. BKT, Spring Cyl. L.H. Ski | 1 |
| 15 | L20500-10 | 17564 | Upper MTG. BKT., Spring Cyl. R.H. Ski | 1 |
| 16 | L20500-11 | 17564 | Check Cable Assy., Main Ski | 2 |
| 17 | L20500-12 | 17564 | Safety Cable Assy., Main Ski | 2 |
| 18 | L20500-13 | 17564 | Tail Ski Axle Adaptor | 2 |
| 19 | L20500-14 | 17564 | Tail Ski Attach Bracket | 2 |
| 20 | L20500-15 | 17564 | Spring Cylinder, Tail Ski | 1 |
| 21 | L20500-16 | 17564 | Attach Fitting, Spring Cyl. | 1 |
| 22 | L20500-17 | 17564 | Safety Cable Assy., Tail Ski | 1 |
| 23 | L20500-18 | 17564 | Tail Wheel Bracket Kit, Tail Ski | 1 |
| 24 | L20500-18-1 | 17564 | Tail Wheel BKT. L.H., Tail Ski | 1 |

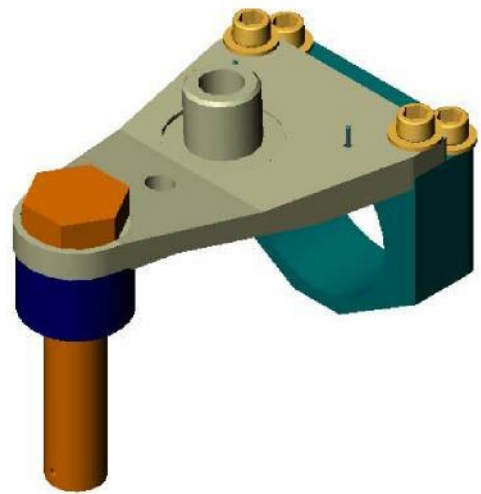
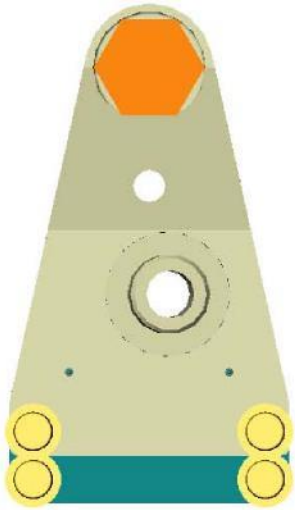
RIGHT & LEFT MAIN SKI
TAIL SKI
PARTS LIST

| INDEX NUMBER | PART NUMBER | CODE IDENT. NO. | NOMENCLATURE | NUMBER REQUIRED |
|--------------|--------------|-----------------|--|-----------------|
| 25 | L20500-18-2 | 17564 | Tail Wheel BKT. R.H. Tail Ski | 1 |
| 26 | L20500-18-3 | 17564 | Spacer | 2 |
| 27 | D501 | 17564 | Wheel Assy. (Lang) or 1840 Scott, Tail Ski | 1 |
| 28 | L20500-D501A | 17564 | Swivel Tao; Wheel Assy. (Lang) | 2 |
| 29 | 30512-02 | 77294 | Leaf Spring | 2 |
| 30 | 30152-04 | 99294 | Leaf Spring | 2 |
| 31 | A512 | | Spacer (Lang) | 2 |
| 32 | EB616-22 | 17564 | Bolt | 4 |
| 33 | EB616-20 | 17564 | Bolt | 2 |
| 34 | AN7-14A | | Bolt | 2 |
| 35 | AN960-716 | | Washer | 2 |
| 36 | AN363-720 | | Nut | 2 |
| 37 | AN363-616 | | Nut | 6 |
| 38 | AN960-616 | | Washer | 6 |
| 39 | AN47-14 | | Eye Bolt | 2 |
| 40 | AN476-16 | | Eye Bolt | 3 |
| 41 | AN310-6 | | Nut | 3 |
| 42 | AN396-23 | | Clevis Pin | 6 |
| 43 | AN396-19 | | Clevis Pin | 1 |
| 44 | AN395-19 | | Clevis Pin | 4 |
| 45 | AN3-14A | | Bolt | 2 |
| 46 | AN3-07A | | Bolt | 4 |
| 47 | AN365-1032 | | Nut | 6 |
| 48 | 380-3-2 | | Cotter Pin | 10 |
| 49 | L20500-19 | 17564 | Lower Spring Cyl. Attach BKT. Tail Ski | 1 |
| 50 | AN26-21 | | Clevis Bolt | 1 |
| 51 | AN320-6 | | Nut | 1 |
| 52 | AN960-616L | | Washer | 1 |

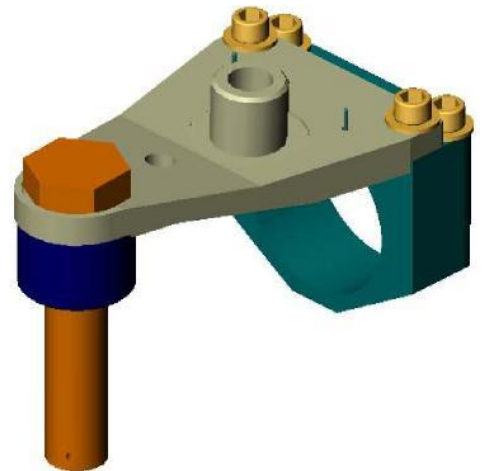
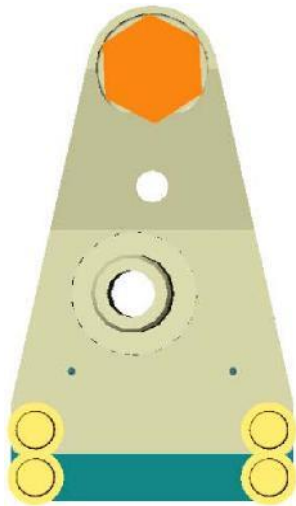
RIGHT & LEFT MAIN SKI
TAIL SKI
PARTS LIST

| INDEX NUMBER | PART NUMBER | CODE IDENT. NO. | NOMENCLATURE | NUMBER REQUIRED |
|--------------|---------------|-----------------|--------------------------------------|-----------------|
| 53 | AN509-416R-16 | | Screw | 1 |
| 54 | AN509-416R-18 | | Screw | 1 |
| 55 | A3475-020-24A | | Countersunk Washer (Tinnerman) | 2 |
| 56 | AN8-32 | | Bolt | 1 |
| 57 | AN4-7A | | Bolt | 6 |
| 58 | AN5-6A | | Bolt | 2 |
| 59 | AN5-7A | | Bolt | 8 |
| 60 | AN5-10A | | Bolt | 8 |
| 61 | AN310-8 | | Nut | 1 |
| 62 | AN365-428 | | Nut | 8 |
| 63 | AN365-524 | | Nut | 3 |
| 64 | AN960-416 | | Washer | 8 |
| 65 | AN960-516 | | Washer | 19 |
| 66 | NASS14P524-16 | | Screw | 1 |
| 67 | 30185 | 17564 | Countersunk Washer | 1 |
| 70 | 528D378D050 | 17564 | Washer Special | 8 |
| 71 | NAS148DH16 | | Bolt | 2 |
| 72 | MS2000C8 | | Washer | 2 |
| 73 | NAS144DH10 | | Bolt | 4 |
| 74 | AN316-5R | | Nut | 2 |
| 75 | AN565FC524H12 | | Screw | 2 |
| 76 | AN46-14 | | Eyebolt | 1 |
| 77 | L20500-42 | 17564 | Outboard Axle Adaptor (Navy type) | 2 |
| 78 | L20500-5M | 17564 | Ski Axle Outboard (Navy type) | 2 |

L20500-7-1



L20500-7-2

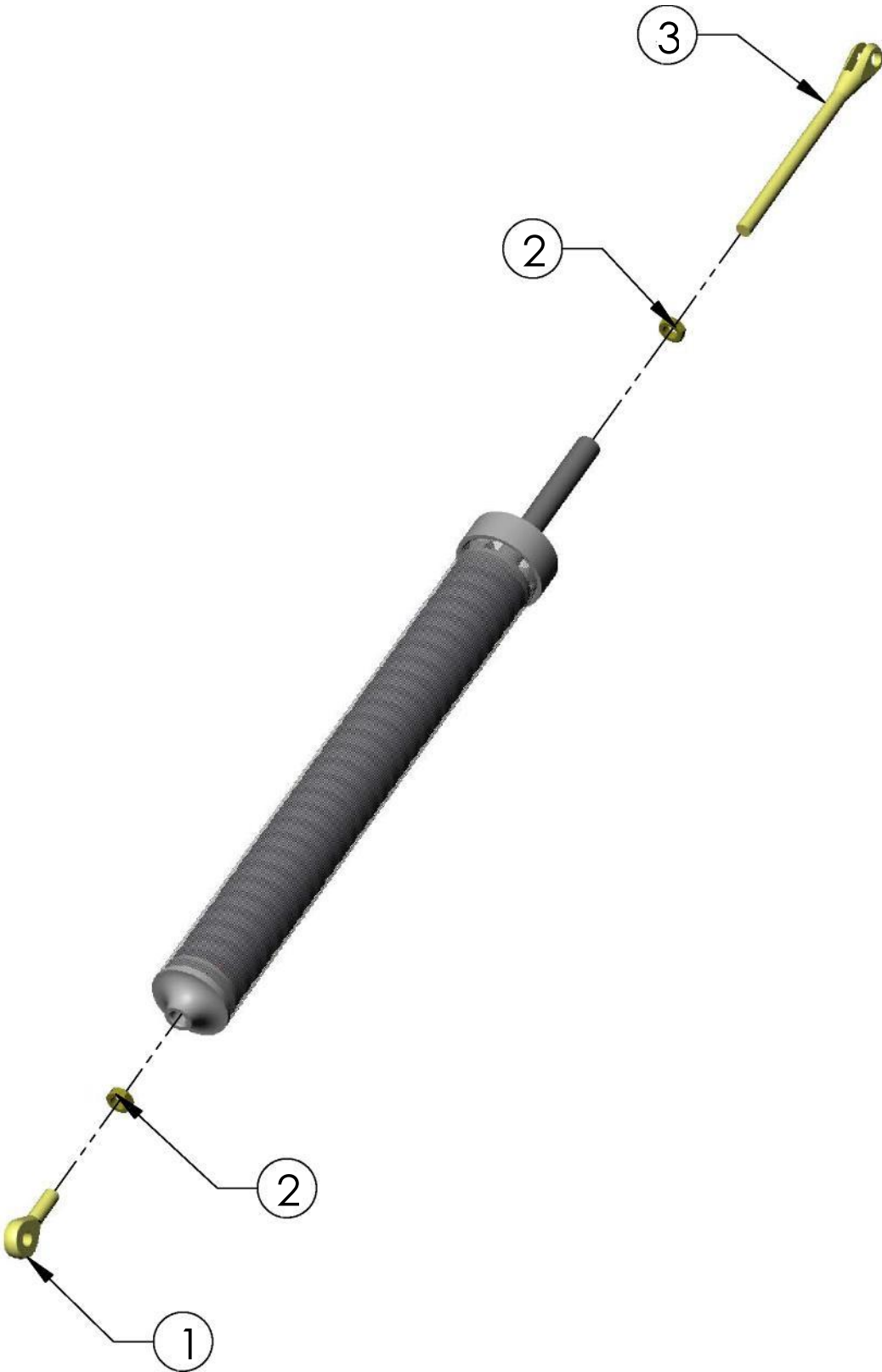


L20500-7-3



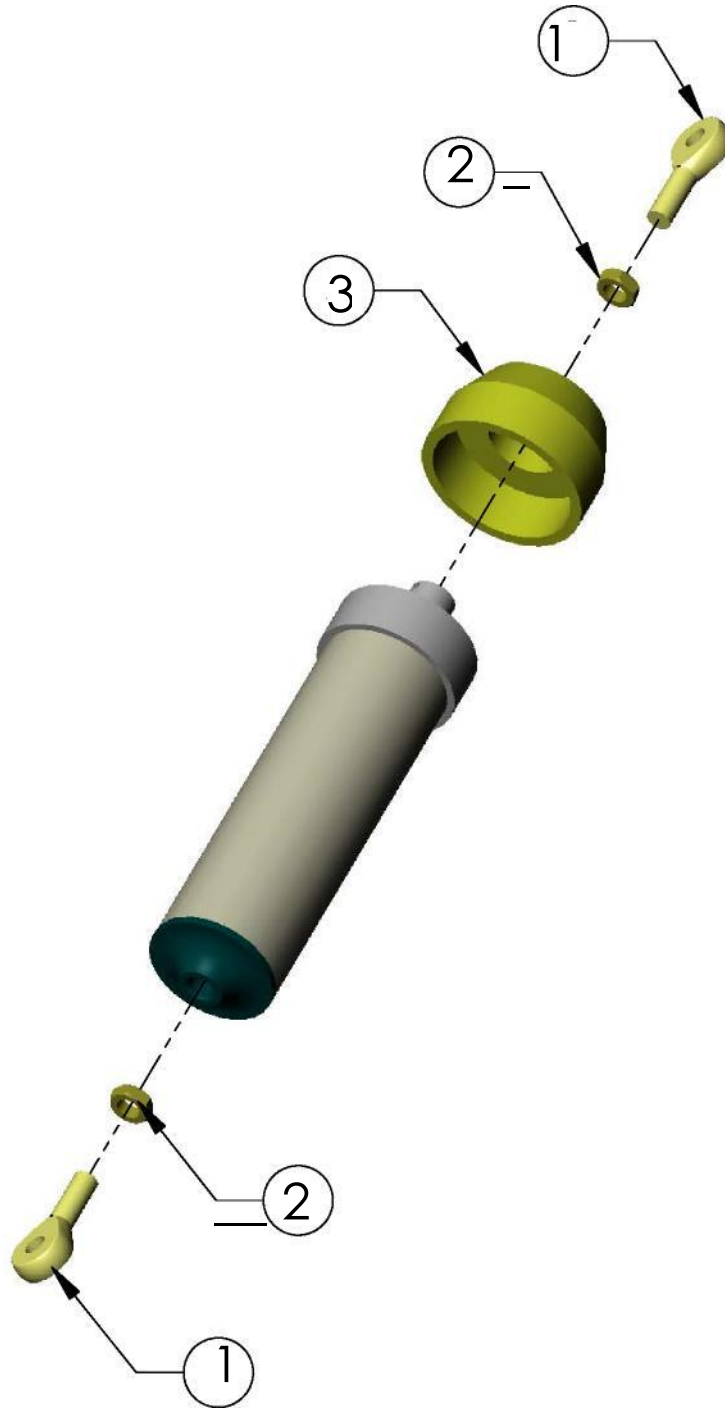
PARTS LIST

| INDEX NUMBER | PART NUMBER | CODE IDENT. NO. | NOMENCLATURE | NUMBER REQUIRED |
|--------------|-------------|-----------------|-------------------------------|-----------------|
| 01 | L20500-7-1 | 17564 | Inboard Axle Adaptor Assy. LH | 1 |
| 02 | L20500-7-2 | 17564 | Inboard Axle Adaptor Assy. RH | 1 |
| 03 | L20500-7-3 | 17564 | Outboard Axle Adaptor Assy. | 2 |
| | | | | |



SPRING CYLINDER, MAIN SKI
PARTS LIST

| INDEX NUMBER | PART NUMBER | CODE IDENT. NO. | NOMENCLATURE | NUMBER REQUIRED |
|--------------|-------------|-----------------|--------------|-----------------|
| 1 | HMX-6G | | Rod End | 1 |
| 2 | AN316-7 | | Nut | 2 |
| 3 | L20500-8-8 | 17564 | Fork End | 1 |
| | | | | |

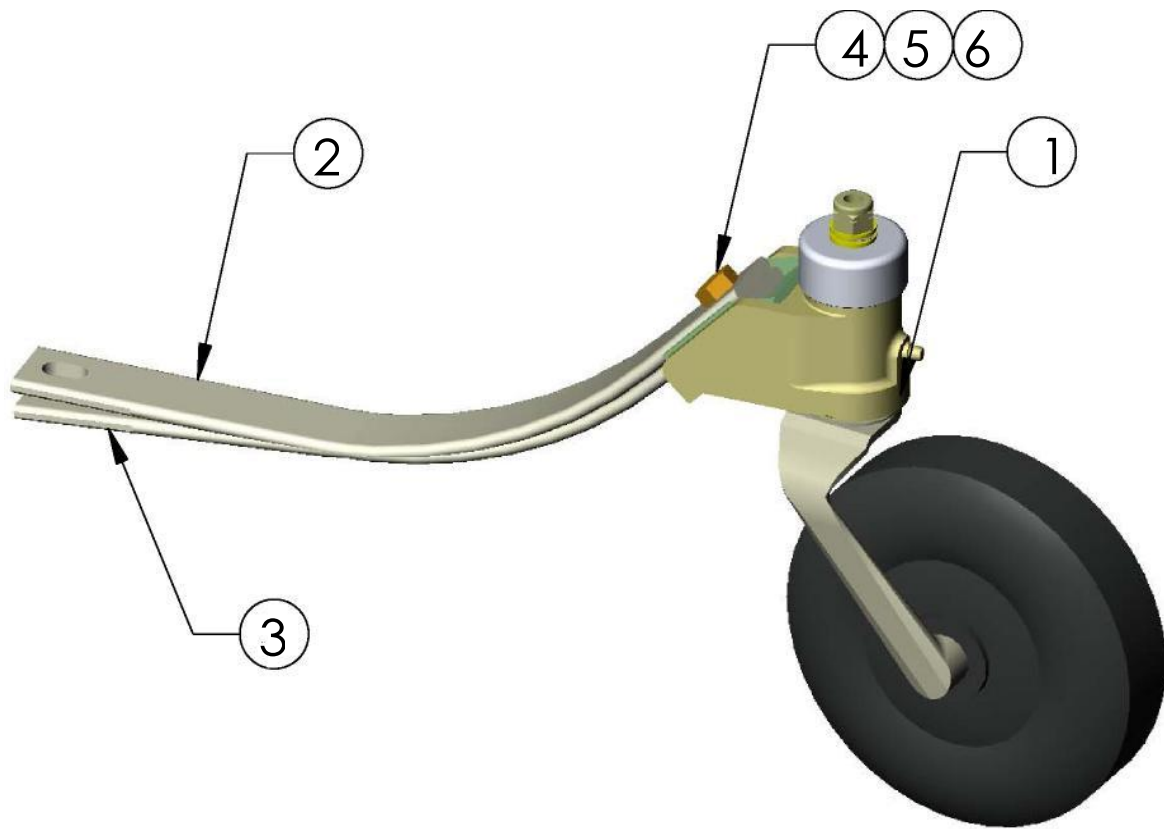


1.5.5

SPRING CYLINDER, TAIL SKI
PARTS LIST

1.5.5

| INDEX NUMBER | PART NUMBER | CODE IDENT. NO. | NOMENCLATURE | NUMBER REQUIRED |
|--------------|--------------|-----------------|----------------|-----------------|
| 1 | HMX-6G | | Rod End | 2 |
| 2 | AN316-7 | | Nut | 2 |
| 3 | L20500-15-10 | | Plastic Bumper | 1 |
| | | | | |
| | | | | |



PARTS LIST

| INDEX NUMBER | PART NUMBER | CODE IDENT. NO. | NOMENCLATURE | NUMBER REQUIRED |
|--------------|--------------|-----------------|------------------|-----------------|
| 1 | L20500-D501A | | Tail Wheel Assy. | 1 |
| 2 | 30512-02 | | | |
| 3 | 30512-04 | | | |
| 4 | AN7-14A | | | |
| 5 | AN960-716 | | Washer | 2 |
| 6 | AN363-720 | | Nut | 1 |
| | | | | |
| | | | | |