

**THIS MANUAL INCLUDES INFORMATION PROPRIETARY TO
AIRGLAS, INC. AND SHALL NOT BE USED TO MANUFACTURE OR
REPRODUCE WITHOUT PERMISSION OF AIRGLAS, INC.**

INSTALLATION, MAINTENANCE, SERVICE INSTRUCTIONS & ILLUSTRATED PARTS LIST

AIRGLAS ®

**MODEL L20500 Ski Kit
for
Sikorsky UH60A, L, MH60G, K, L Helicopters**

**CODE INDENT. NO. 17564
AIRGLAS MANUAL NO. L20500**

AIRGLAS, INC.

LOG OF REVISIONS

Revision No.	Pages Affected	Description	Date
Initial Rel.	1 – 41	Original	June 18, 1995
1	37, 39	Index no. 7, 8, 9, 15 on page 37 part no. changed. Index no. 2, 7, 8 on page 39 part no. changed.	Jan. 31, 1997
2			March 22, 2002
3		Added repair appendix	15 Nov, 2012
4	29-30	Added Maintenance and Ground Handling Restrictions & Inspection	08 Dec 15
5	2-3	Changed torque requirement for (L20500-7-3) Outboard Axle Adapter Shaft	1 Jul 16

TABLE OF CONTENTS

1 Main/Tail Landing Gear Skis 1

1.1 Main Landing Gear Adaptor Kit..... 2

Figure 1, 1.1 Main Landing Gear Adaptor Kit – Install/Remove 3

Figure 2, 1.1 Main Landing Gear Adaptor Kit – Shim Installation 4

1.2 Main Landing Gear Ski – Install/Remove..... 5

Figure 3, 1.2 Main Landing Gear Ski – Install/Remove 6

Figure 4, 1.2 Main Landing Gear Ski – Install/Remove..... 7

Figure 5, 1.2 Main Landing Gear Ski – Install/Remove..... 8

1.2 Main Landing Gear Ski – Install/Remove 9

1.3 Tail Landing Gear Ski – Install/Remove 11

Figure 6, 1.3 Tail Landing Gear Ski – Install/Remove 12

Figure 7, 1.3 Tail Landing Gear Ski – Install/Remove 13

1.4 Main/Tail Landing Gear Ski – Types of Damage..... 14

1.5 L20500 Ski Kit Parts List 15

1.5.1 Illustrated Main Ski (Right & Left) 16-18

1.5.2 Illustrated Tail Ski 16-18

PAGES 19 & 20 NOT USED

1.5.3 Illustrated Main Landing Gear Adaptor Kit.....21

1.5.3 Main Landing Gear Adaptor Kit Parts List 22

1.5.4 Illustrated Spring Cylinder, Main Ski 23

TABLE OF CONTENTS

1.5.4 Spring Cylinder, Main Ski Parts List 24

1.5.5 Illustrated Spring Cylinder, Tail Ski 25

1.5.5 Spring Cylinder, Tail Ski Parts List.....26

1.5.6 Illustrated Tail Wheel, Main Ski 27

1.5.6 Tail Wheel, Main Ski Parts List 28

2.0 Maintenance and Ground Handling Restrictions 29

3.0 Maintenance Operational Checks (10 hour/14 days) 29

4.0 Inspection (500 Hour/Annual)..... 29-30

INITIAL SETUP PERSONNEL**REQUIRED**

- One: MOS 67T – Tactical Transport Helicopter Repairer
- One: MOS 68G – Aircraft Structural Repairer
- Six: - Assistants

MATERIALS/PARTS

- Abrasive Paper, 80-Grit
- Adaptor Kit, L20500-7
- Adhesive, EA956
- Cheesecloth, CCC-440
- Corrosion Preventative Compound, MIL-C-16173D, Grade 2
- Cotter Pin
- Dry Cleaning Solvent, P-D-680 Type II
- Foam 6 x 6 x 6 inches
- Furane Epoxy Resin Coating
- Lubriplate, 630AA
- Methyl Ethyl Ketone, TT-M-261
- Non-Metallic Scraper, (Locally Made)
- Rag, Clean, DDD-T-541
- Safety wire
- Sealing Compound, MIL-S-81733
- Ski Repair Kit
- Teflon Urethane Coating
- Wood, 1 x 3 x 16 inches

TOOLS

- Aircraft Mechanic's Toolkit
- Drill Bit, 3/4- inch
- Drill Bit, 11/64- inch
- Feeler Gage
- Sander or Sanding Block
- Torque Wrench, 100 – 500 ft. lbs., GGG-W-686
- Torque Wrench, 0 – 600 in. lbs, GGG-W-686

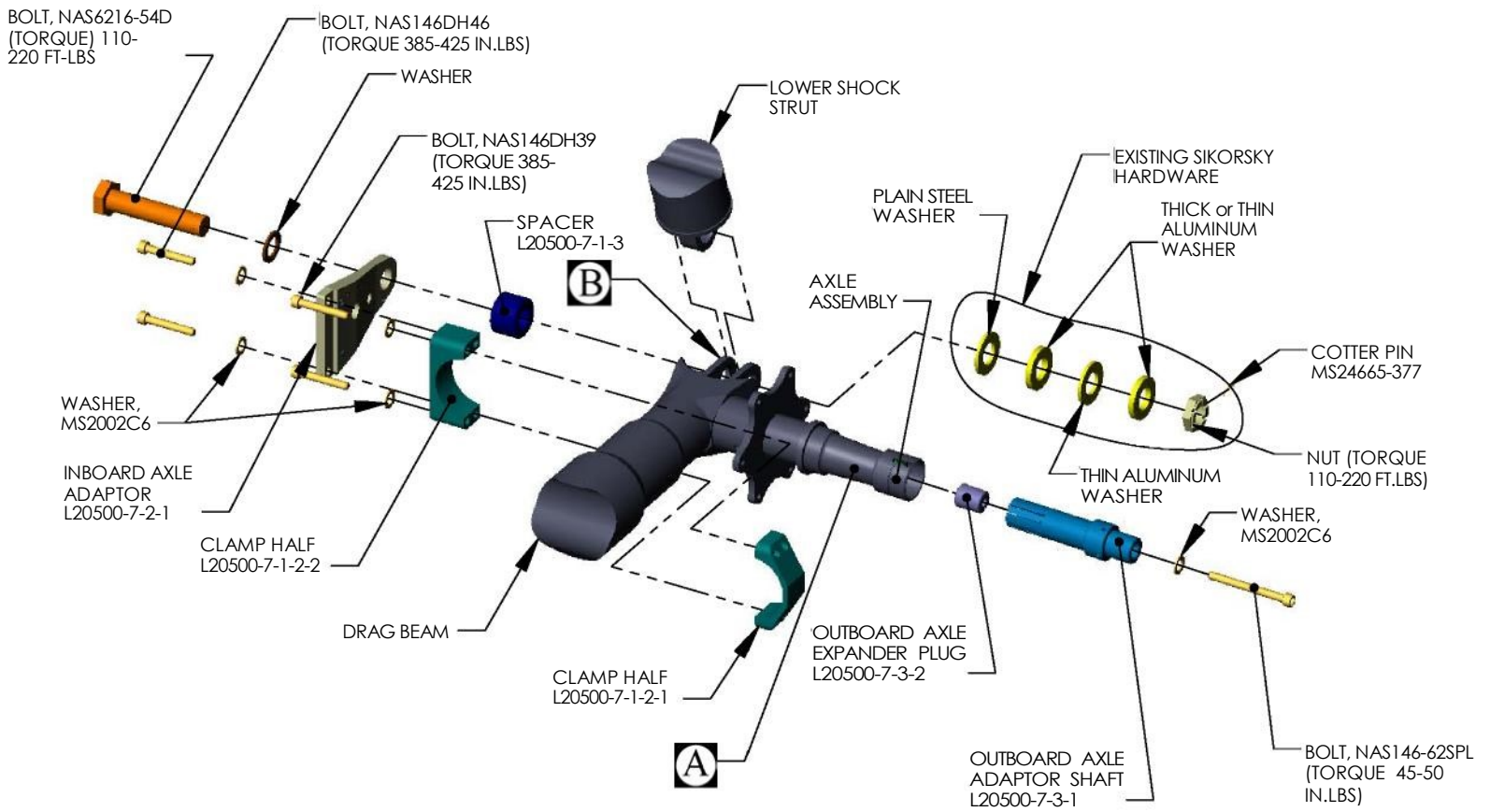
INSTALL

NOTE

Install is the same for both sides. Each bracket is labeled left or right.

- a. Remove tow plate fairing (1H-60(M)G-2-2). Retain hardware.
- b. Remove tow plate (1H-60(M)G-2-2).
- c. Remove main landing gear cutter ((1H-60(M)G-2-2).
- d. Install step and spacer using existing bolts (1H-60(M)G-2-2).
- e. Install existing bolts and spacer in place of tow plate (1H-60(M)G-2-2).
- f. Jack aircraft at forward jack points (1H-60(M)G-2-2).
- g. Relocate lower aft brake line clamp forward to base of next chamfer.
- h. Support drag beam for alignment and remove bolt, washers, and nut holding lower end of shock strut to drag beam (Figure1, page 3).
- i. Loosely install clamp to drag beam using short bolts and washers (Figure 1, page 3).
- j. Position inboard axle adaptor on clamp and drag beam. Install long bolts and washers in aft clamp holes (Figure 1, page 3).
- k. Position spacer between axle adaptor and drag beam and install bolts through axle adaptor, spacer and drag beam strut. Install washer and nut (Figure 1, page 3).
- l. Snug up all bolts
- m. Using feeler gage, measure gap between axle adaptor and drag beam (Figure 2, page 4 Detail B). MAXIMUM GAP ALLOWED 0.011 INCH.
- n. If gap exceeds maximum allowed, remove bolts, washers, spacer and axle adaptor and shim until proper gap is obtained. Rivet shims to adaptor.
- o. Position inboard axle adaptor on clamp. Install long bolts and washers in axle adaptor and clamp (Figure 1, page 3).
- p. Position spacer between axle adaptor and drag beam. Install bolt, through axle adapter, spacer, drag beam strut. Install washer and nut (Figure 1, page 3).
- q. TORQUE LONG AND SHORT BOLTS EVENLY ON CLAMP AND AXLE ADAPTOR TO 385-425 INCH-POUNDS.
- r. Safety wire bolts.
- s. Remove bolt, washers and nut from axle adaptor and drag beam.
- t. Bolt shock strut to drag beam as follows: Refer to (Figure 1, page 3).
 - 1) Install countersunk washer on bolt with countersunk side toward head.
 - 2) Install bolt with head inboard.
 - 3) Install plain steel washer on bolt.
 - 4) Install thick aluminum washer on bolt.
- u. Remove the foam in main gear axles to a depth of 5.2" (inside of axle must be clean). Install outboard axle adaptor shaft, making sure to align the cotter pin hole. Torque the NAS146-62SPL attaching bolt to **45-50 in.-lbs.** (Figure 1, page 3)

Caution: Avoid over torquing NAS146-62SPL bolt, which could lead to deformation of axle.



A

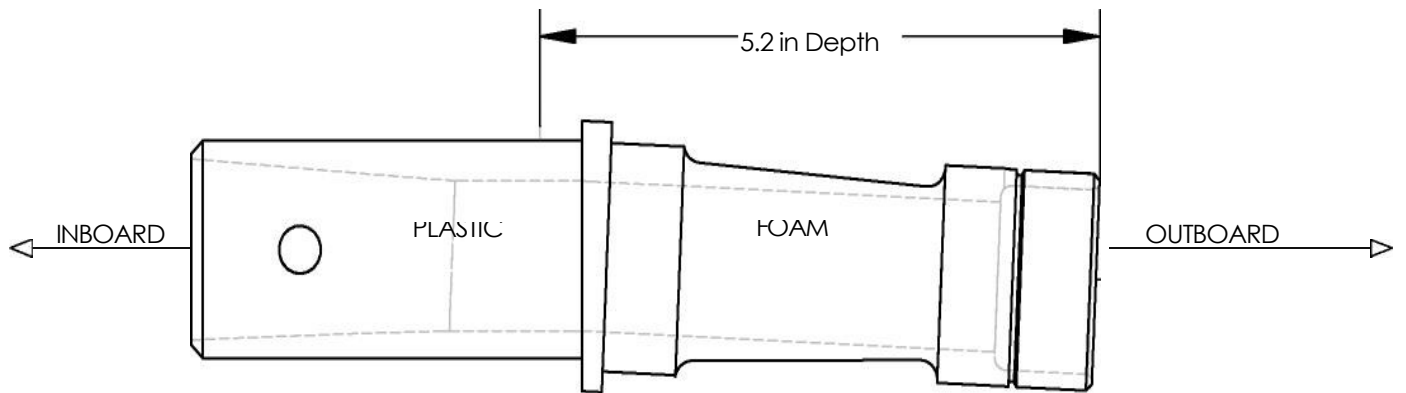
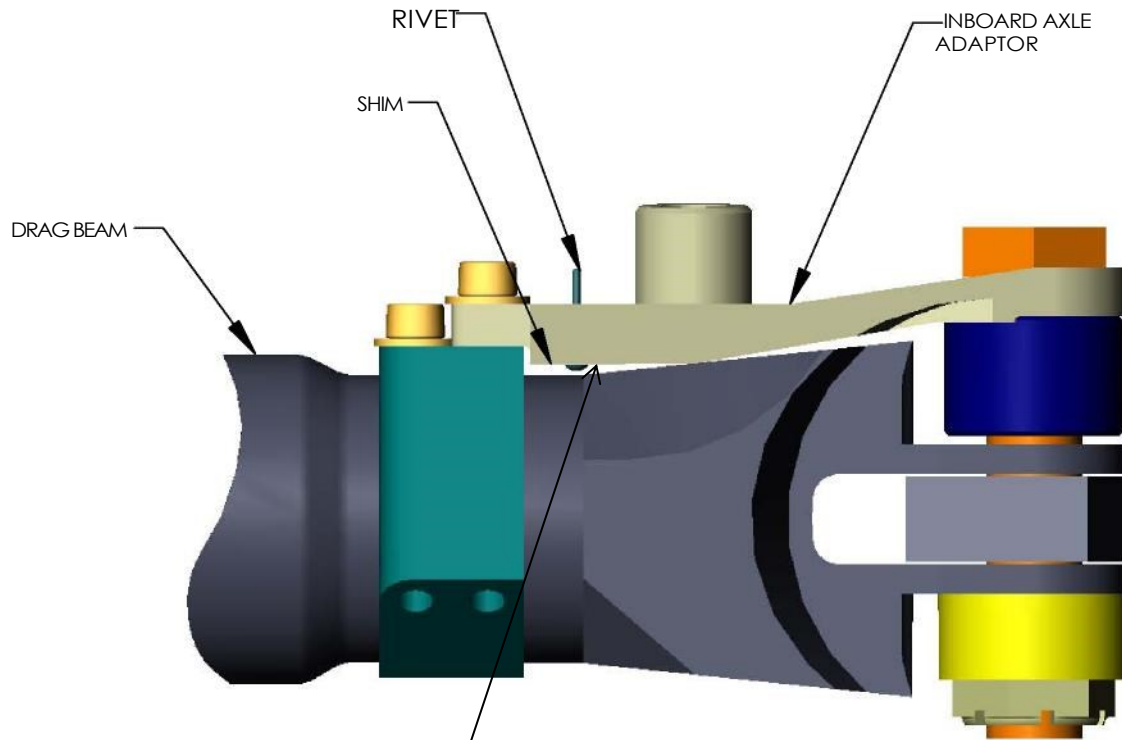


Figure 1
Page 3

B



NOTE: Measure Maximum .011 Gap at Shim

FIGURE 2
4
AIRGLAS, INC.
ANCHORAGE, AK 99507

MAIN LANDING GEAR SKI - INSTALL

Installation of both skis (fixed and hinged) is the same except where noted.

- a. Remove paint in and around pivot pin on drag beam and drag beam support (Figure 3, page 6, Detail A).
- b. Lubricate mounting pin on upper mounting bracket using Lubriplate, 630AA.
- c. Install upper mounting bracket into pivot pinhole.
- d. Using bolt, install retaining clamp to upper mounting bracket (Figure 3, page 6, Detail A).

CAUTION

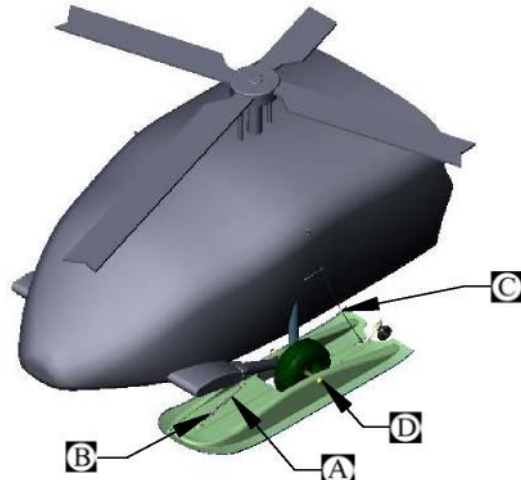
Damage to retaining clamp and cap screw will occur if cap screw is over-tightened. Use care when tightening cap screws.

- e. Adjust the clearance between the mounting bracket and the lower aft edge of the sponson. Tighten cap screw until mounting is snug against sponson (Figure 3, page 6 Detail A). **TORQUE JAMNUT TO 75 – 85 INCH-POUND.**
- f. Install spring cylinder to upper mounting bracket with eyebolt, washers, special washers, and nut. Ensure bolt head is on inboard side (Figure 3, page 6, Detail A). **TORQUE NUT TO 100-140 INCH POUNDS.** Install cotter pin.
- g. Install inboard safety cable to eyebolt with clevis pin and cotter pin. (Figure 3, page 6, Detail A).
- h. Temporarily secure spring cylinder to sponson with safety tab holding main ski tail wheel assembly to ski and remove tail wheel assembly (Figure 4, page 7, Detail D).
- i. Remove bolts, washers, nuts and rear safety tab holding main ski tail wheel assembly to ski and remove tail wheel assembly. (Figure 4, page 7, Detail D).
- j. Place a 1 x 3 x 16 inch piece of wood under rear edge of wheel well. Skis must be supported along the aft edge of the skis, and the aft portion of the wheel well opening. Failure to support the ski could result in stress cracks. See Appendix for details.

CAUTION

To avoid damage to ski tunnels take extreme care to ensure that the wheels are on the outboard part of the wheel wells.

- k. Tow helicopter, (1H-6-(M) G-2-1), or push helicopter forward with help of assistants until main wheels are centered in ski wheel well.



A

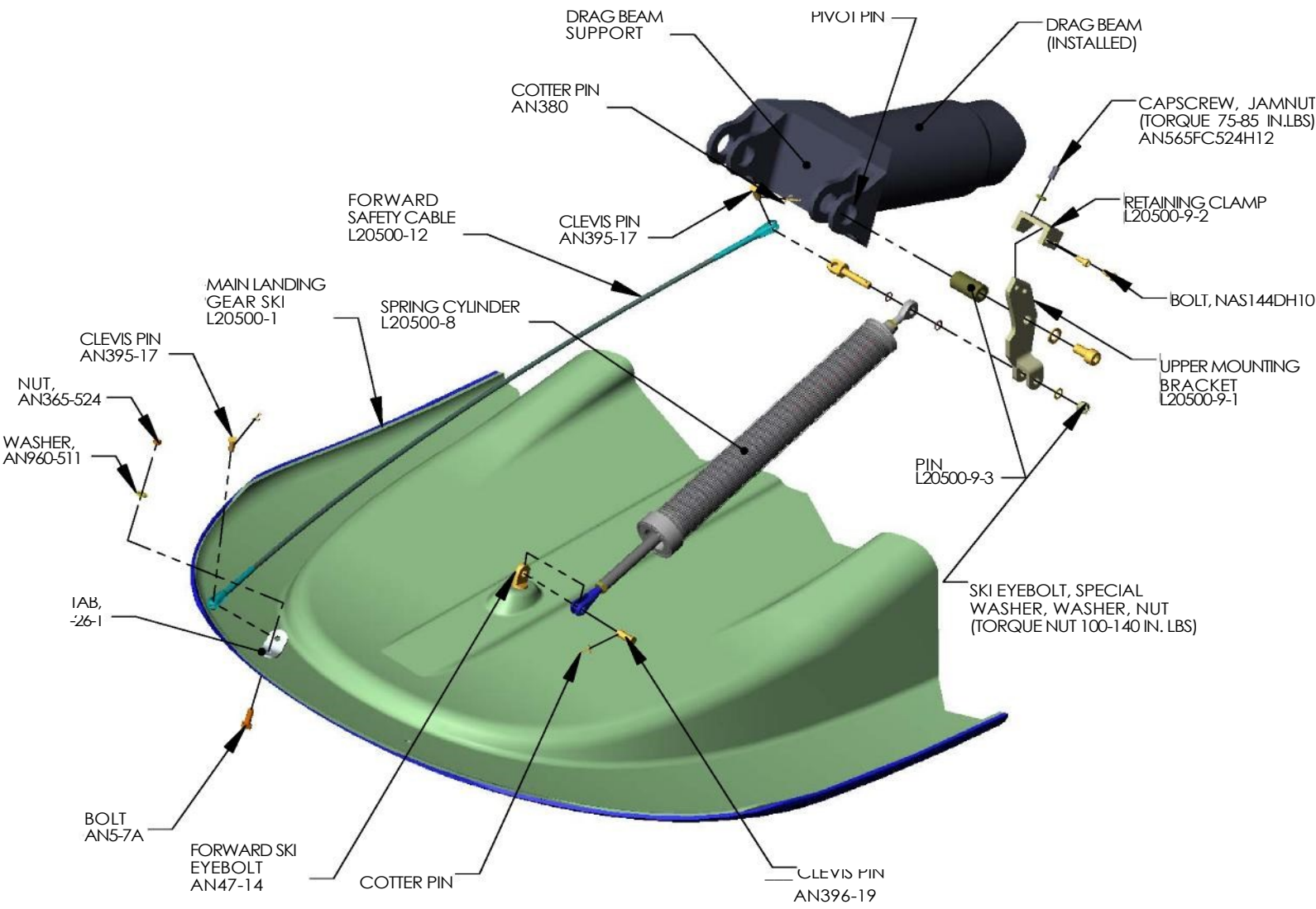
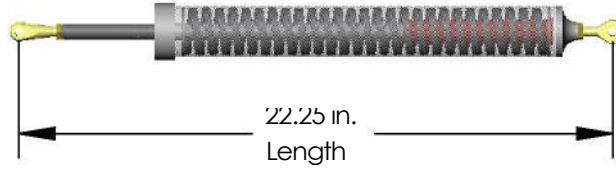


FIGURE 3
6
AIRGLAS, INC.
ANCHORAGE, AK 99507

B



C

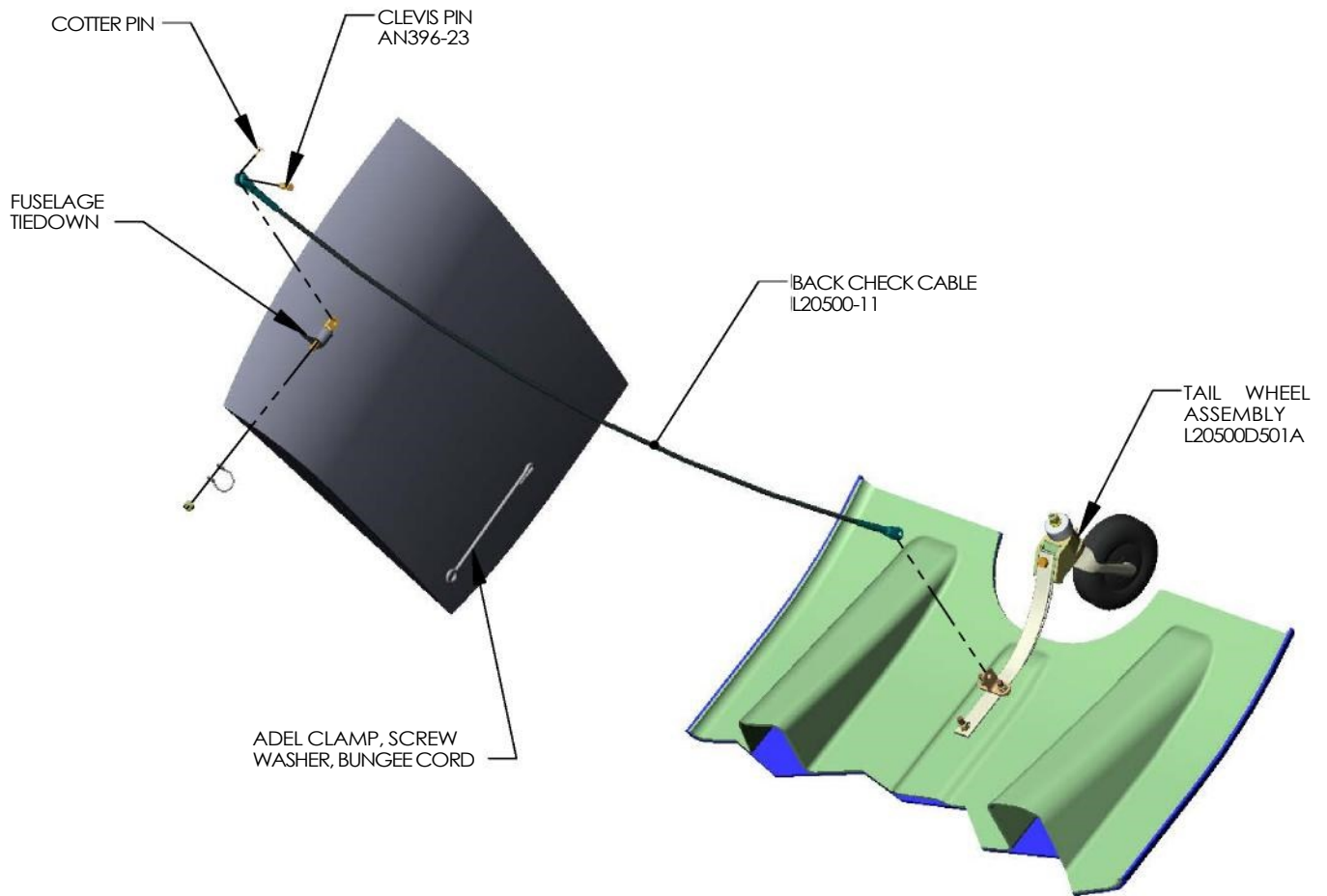


FIGURE 4
7
AIRGLAS, INC.
ANCHORAGE, AK 99507

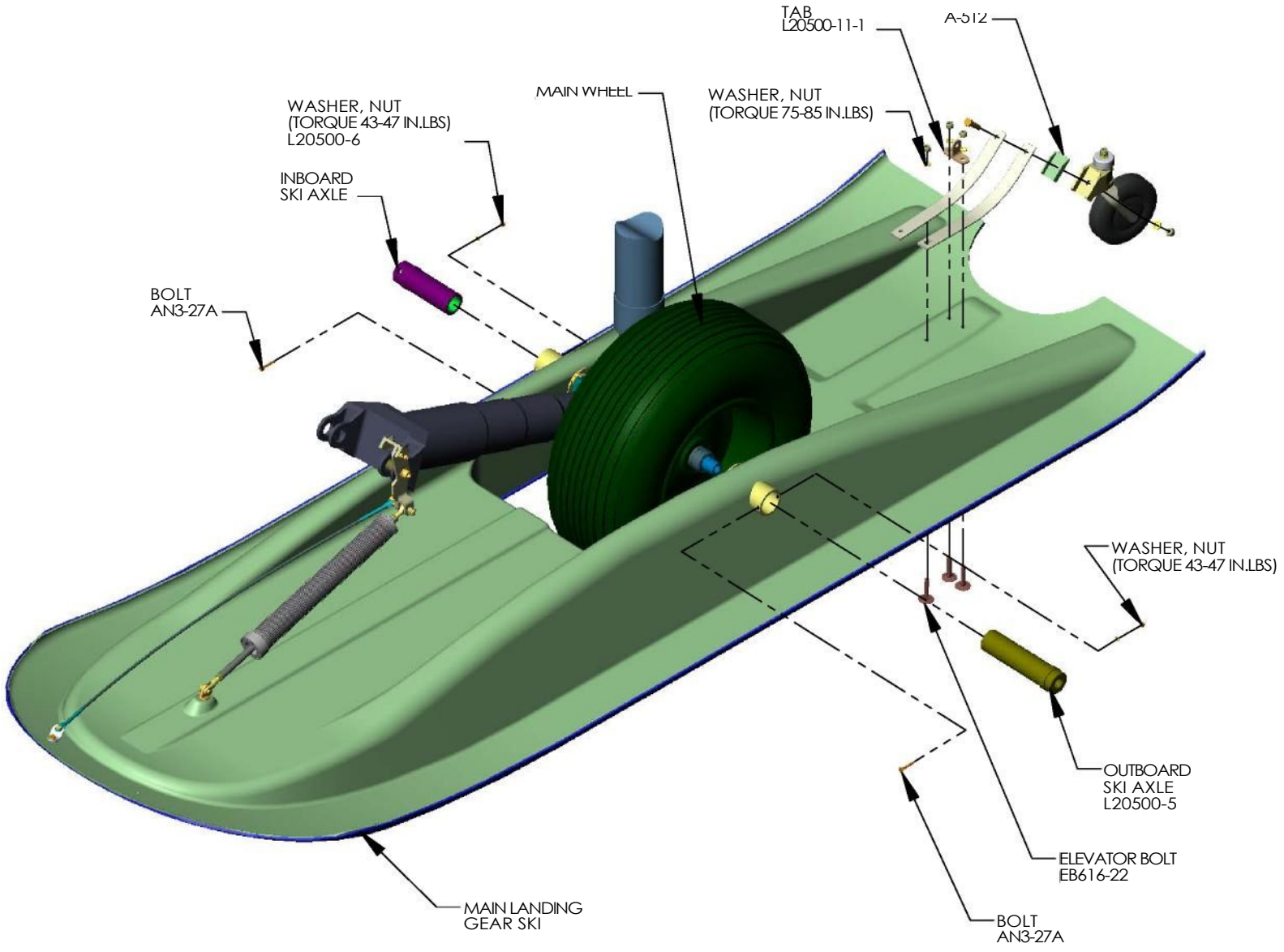


FIGURE 5
8
AIRGLAS, INC.
ANCHORAGE, AK 99507

1. Remove wood.

- m. Install tail wheel assembly and rear safety cable to ski using bolts, washers, table and nuts. Ensure bolts are flush with bottom of ski (Figure 4, page 7, Detail B). TORQUE NUTS TO 75 – 85 INCH-POUNTS
- n. Lubricate ski axle with thin coat of Lubriplate, 630AA.

NOTE

Do not extend spring cylinder beyond its present length of 22-1/4 inches.

- o. Install spring cylinder on forward ski eyebolt with clevis pin and cotter pin (Figure 3, page 6, Detail A) and upper mounting bracket.
- p. Attach ratchet-type cargo strap to aft edge of ski and wrap around oleo. Tighten strap until ski axles align with axle adapter.
- q. Insert outboard ski axle into ski and thread ski axle into axle adapter (Figure 4, page 7, Detail B).
- r. Thread inboard and outboard ski axles until both are evenly seated on axle adapter.
- s. Back off inboard and outboard ski axles until bolt holes line up.
- t. Install bolts through inboard and outboard axles and ski (Figures 4, page 7, Details B). Install washers and nuts on bolts. TORQUE NUTS TO 43 – 47 INCH-POUND.
- u. Install rear check cable to fuselage tie down fitting eyebolt using clevis pin and cotter pin. (Figure 5, Page 8, Detail D).

NOTE

Longer screw may be required to install Adel clamp.

- v. Remove center screw and washer from ESSS access door on support fairing at STA 303.4. Install Adel clamp and bungee cord on safety cable to access door using screw and washer (Figure 4, page 7, Detail C).
- w. Install inboard safety cable to ski bolt, washer and nut (Figure 3, page 6, Detail A).

REMOVE

- x. Remove bolt, washer and nut holding inboard safety cable to ski (Figure 3, page 6, Detail A).
- y. Remove clevis pin and cotter pin holding inboard safety cable to ski eyebolt (Figure 3, Page 6, Detail A).
- aa. Remove inboard safety cable.
- bb. While lifting forward edge to ski to relieve tension on the spring cylinder, remove eyebolt, washers, special washers and nut holding spring cylinder to upper mounting bracket (Figure 3, page 6, Detail A).
- cc. Remove clevis pin and cotter pin holding spring cylinder to ski (Figure 3, page 6, Detail A).
- dd. Remove spring cylinder.
- ee. Remove screw and washer holding Adel clamp to ESSS fairing and remove clamp and bungee cord (Figure 5, page 8, Detail D). Reinstall screw and washer.
- ff. Remove clevis pin and cotter pin holding rear safety cable to fuselage tie down fitting and remove cable (Figure 5, page 8, Detail D).

- gg. Place a 6-inch foam pad 12 inches from front of ski.
- hh. Remove bolts, washers and nuts from ski axles (Figure 4, page 7, Detail B).
- ii. Unscrew and remove ski axles from axle adapters.
- jj. Remove bolts, washers, nuts, and tab on rear safety cable from tail wheel assembly (Figure 5, page 8, Detail D).
- kk. Remove tail wheel assembly and rear safety cable.
- ll. Remove foam pad from under ski
- mm. Place a 1x3x16 inch wood block under read edge of wheel well.
- nn. Remove retaining clamp.
- oo. Remove upper mounting bracket from pivot pin (Figure 3, page 6, Detail A).
- pp. Remove Lubriplate from pivot pin with cheesecloth moistened with dry-cleaning solvent, P-D 680, Type II.
- qq. Touch up paint as required (1H-60(M)G-2-2).

CAUTION: Skis must be supported along the aft edge of the skis, and the aft portion of the wheel well opening. Failure to support the ski could result in stress cracks. See Appendix for details.

CAUTION

- mm. Tow helicopter (1H-60(M)G-2-1 or push helicopter rearward until the wheel has cleared rear of ski.
- nn. Reinstall tail wheel assembly on ski using bolts, washers and nuts (Figure 4, page 7, Detail B).

NOTE

REMOVAL

Remove of the upper mounting bracket is optional

- pp. Loosen jamnut on cap screw (Figure 3, page 6, Detail A).
- qq. Loosen cap screw on remaining clamp. Remove bolt holding retaining clamp to upper mounting bracket (Figure 3, page 6, Detail A).

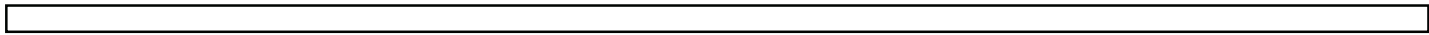
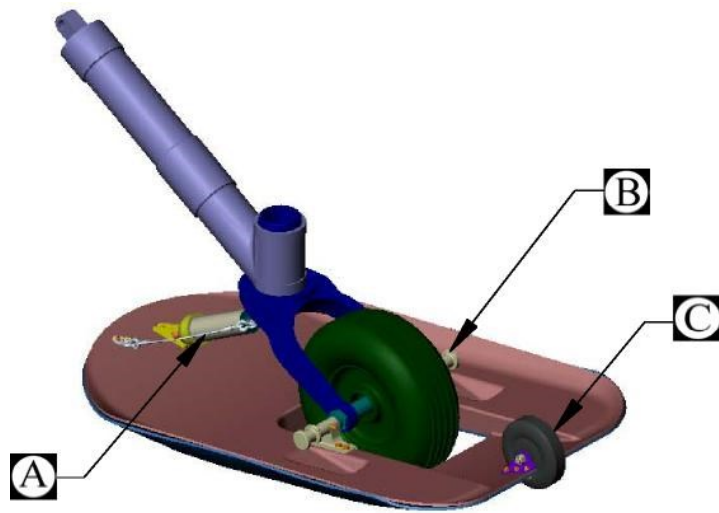
INSTALL

- a. Remove jack pad from tail wheel yoke (1H-60(M)G-2-3).
- b. Install attachment fitting on spring cylinder into jack pad mounting hole using existing and washer (Figure 6, page 13, Detail A). TORQUE BOLT TO 105 – 115 INCH-POUNDS.
- c. Remove bolts, washers and nuts holding ski tail wheel to ski (Figure 7, page 14, Detail C).
- d. Remove tail wheel assembly.
- e. Have assistant hold ski so rear portion is centered in front of tail wheel.
- f. Slowly tow (1H-60(M)G-2-1) or push helicopter forward until tail wheel is centered in wheel well of ski.
- g. Remove tow bar, if installed (1H-60-(M)G-2-1).
- h. Lubricate ski axles with Lubriplate, 630AA.
- i. Lift ski until it aligns with tail wheel axle.
- j. Install ski axle adaptors through attach brackets (Figure 7, page 14, Detail B).
- k. Install bolt through attach bracket and axle adaptor and install nut (Figure 7, page 14, Detail B). TORQUE NUT TO 43 – 47 INCH-POUNDS.
- l. Install tail wheel assembly to ski using bolts, washers and nuts (Figure 7, page 14, Detail C). TORQUE NUT TO 75 – 85 INCH POUNDS.
- m. Safety wire bolt.

- n. Attach safety cable to eyebolt securing spring cylinder to attach fitting using clevis pin and cotter pin (Figure 6, page 13, Detail A).

REMOVE

- o. Remove clevis pin and cotter pin attaching safety cable to eyebolt securing spring cylinder to attachment fitting (Figure 6, page 13, Detail A).
- p. Remove safety cable.
- q. Remove bolt and washer holding spring cylinder attachment fitting to jack pad mounting (Figure 6, page 13, Detail A).
- r. Remove spring cylinder.
- s. Remove bolts, washers and nuts holding ski axles (Figure 7, page 14, Detail B).
- t. Remove tail wheel.
- u. Remove bolts, washers nut holding ski axles (Figure 7, page 15, Detail B).
- v. Remove ski axles from tail wheel axle.
- w. Hold ski so that rear portion is parallel to ground behind tail wheel.
- x. Tow (1H-60(M)-G-2-3) or push helicopter rearward until tail wheel clears ski.
- y. Install jack pad (1H-7-(M)G-2-3).
- z. Install tail wheel assembly using bolts washers and nuts (Figure 7, page 14, Detail C).
- aa. Remove tow bar, if installed (1H-60(M)G-2-1).



A

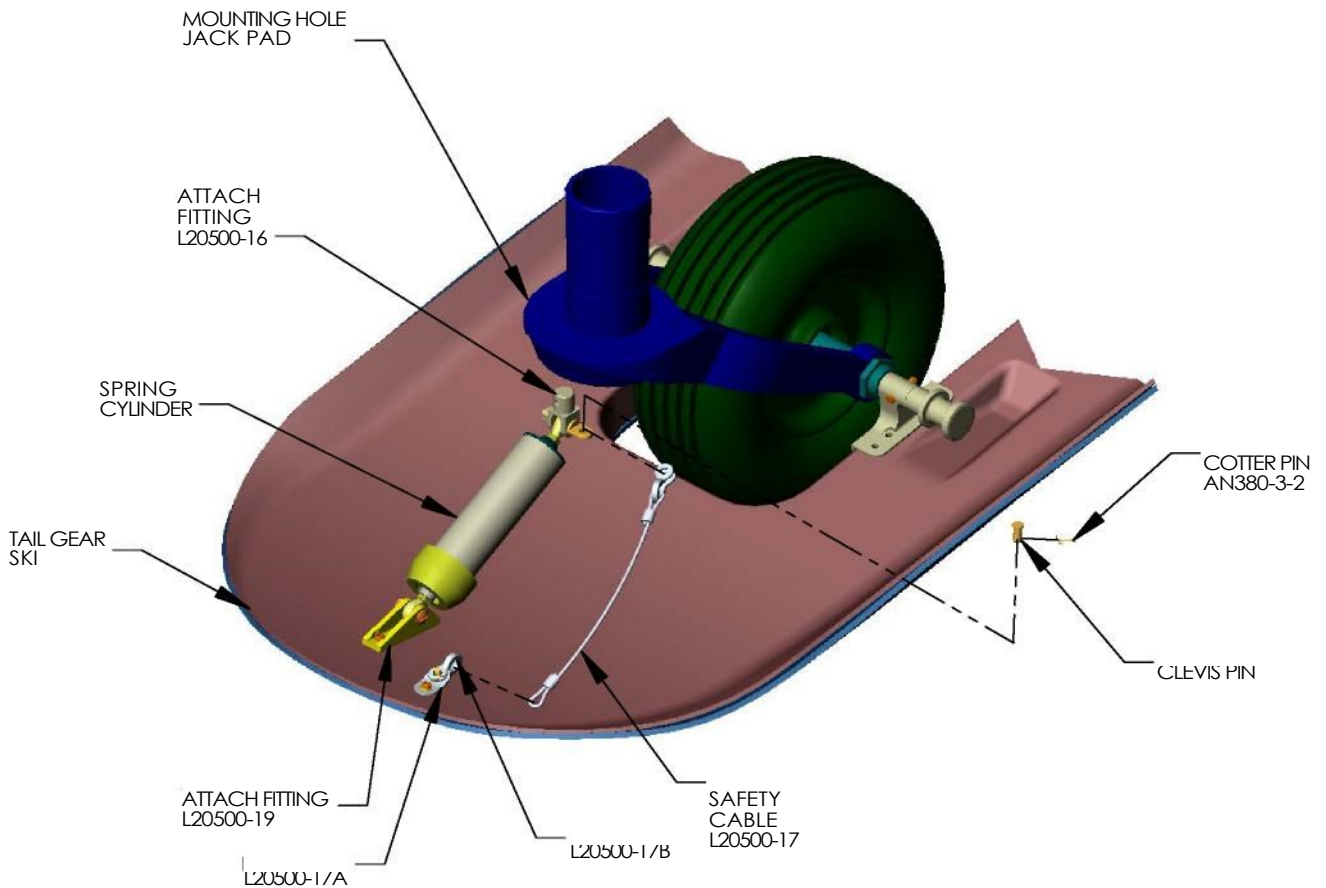


FIGURE 6
12
AIRGLAS, INC.
ANCHORAGE, AK 99507

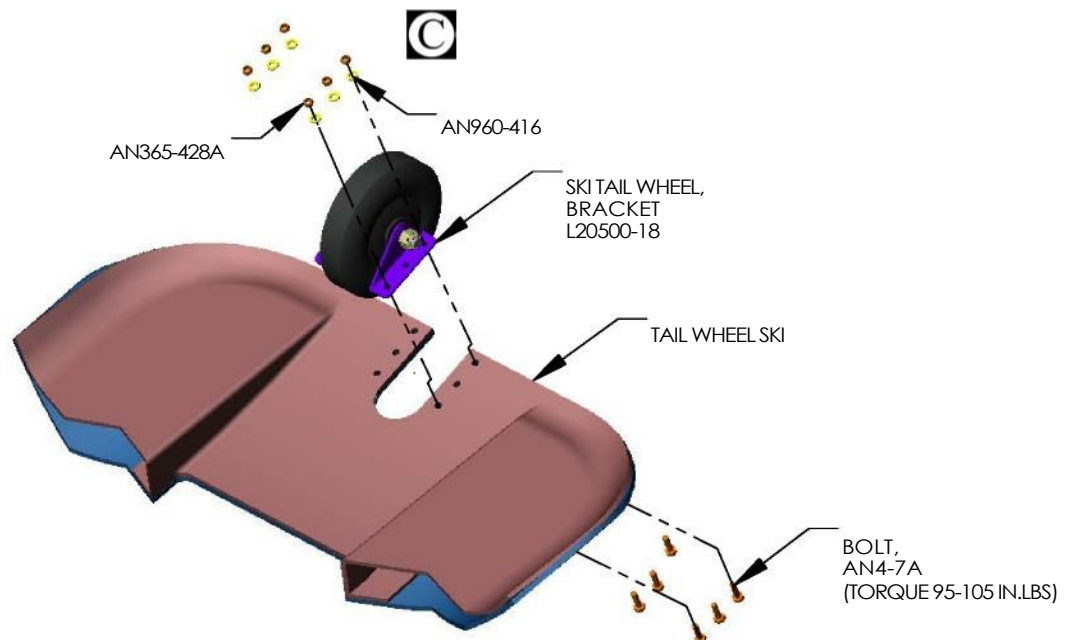
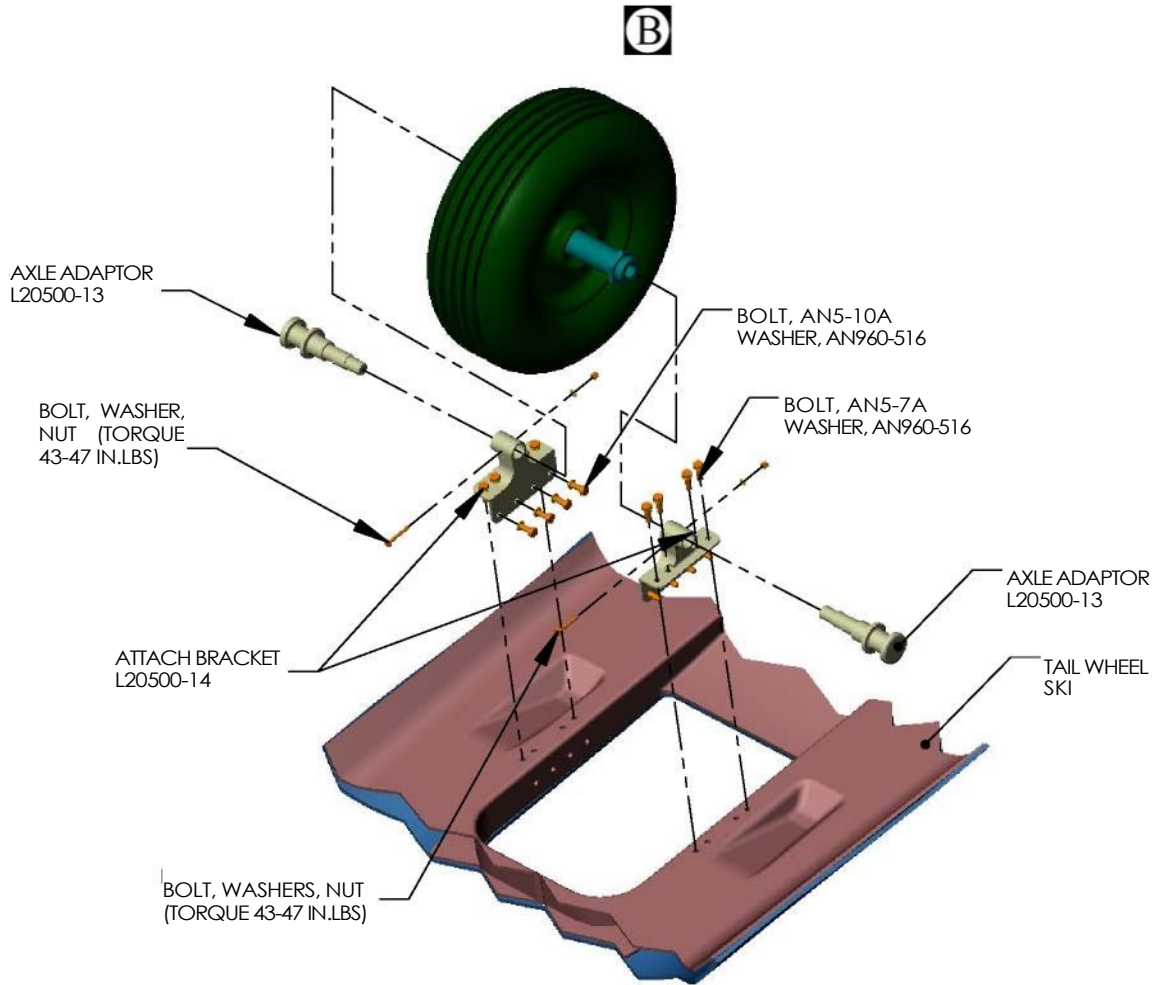


FIGURE 7
13
AIRGLAS, INC.
ANCHORAGE, AK 99507

NEGLIGIBLE DAMAGE

- a. Small nicks, scratches or abraded area on bottom of ski.

- l. Inspect bottom surface for scratches or excessive wear.

REPAIRABLE DAMAGE

- b. Cracks or fractures except in area of ski bushing or spring cylinder attach points.
- c. Delaminations except in area of ski bushing and spring cylinder attach points.
- d. Small holes 2 inches in diameter or less.
- e. Abrasion on bottom of ski due to contact with rocks or other obstacles.
- f. Bottom coating worn through to glass fibers.
- g. Demolished section less than 30 percent of front or rear 1/3 of ski. Consult manufacturer for repair.
- h. Major bottom damage, consult manufacturer for repair.

BOTTOM REPAIR

- m. Using sander and abrasive paper, sand surface of ski until smooth. Wipe clean using a clean rag.

WARNING

Epoxy resin is flammable and toxic. Good general ventilation is normally adequate. Skin and eye protection is required. Avoid all sources of ignition.

- n. Apply coating to surface of ski per instructions in ski repair kit. Allow to dry at room temperature for 24 hours.’
- o. Using sander or sanding block and abrasive paper, roughen epoxy resin coating. Wipe clean using a clean rag.

WARNING

Urethane coating is flammable and toxic. Good general ventilation is normally adequate. Skin and eye protection is required. Avoid all sources of ignition.

- p. Apply Teflon urethane coating to ski surface per instructions in ski repair kit. Allow to dry for 48 hours.

NON-REPAIRABLE DAMAGE

- i. Major damage in area of ski bushings.
- j. Damage to 30 percent or more of ski top including cracks, fractures, delaminations or demolished section, or any combination of each.

INSPECT

- k. Inspect bottom surface of ski for cracks. If damaged, consult manufacturers.

1.5.1	Right & Left Main Ski	16-19
1.5.2	Tail Ski	16-19
1.5.3	Main Landing Gear Adaptor Kit.....	21
1.5.4	Spring Cylinder, Main Ski 23
1.5.5	Spring Cylinder, Tail Ski	25
1.5.6	Tail wheel, Main Ski	27

RIGHT & LEFT MAIN SKI
TAIL SKI

1.5.1
1.5.2

PARTS LIST

INDEX NUMBER	PART NUMBER	CODE IDENT. NO.	NOMENCLATURE	NUMBER REQUIRED
1	L20500	17564	Basic Ski Molding	2
2	L20500-1	17564	Main Ski Assy. L.H.	1
3	L20500-2R	17564	Main Ski Assy. R.H.	1
4	L20500-03	17564	Basic Ski Molded (Tail Ski)	1
5	L20500-3	17564	Ski Axle Assy.	1
6	L20500-4	17564	Ski Bushing Molded into L20500-01	4
7	L20500-5	17564	Ski Axle, Outboard	2
8	L20500-6	17564	Ski Axle, Inboard	2
9	L20500-7	17564	Ski Axle Adaptor Kit Main Skis	1
10	L20500-7-1	17564	Inboard Axle Adaptor Assy. Skis	1
11	L20500-7-2	17564	Outboard Axle Adaptor Assy.	1
12	L20500-7-3	17564	Outboard Axle Adaptor Assy.	2
13	L20500-8	17564	Spring Cylinder, Main Ski	2
14	L20500-9	17564	Upper MTG. BKT, Spring Cyl. L.H. Ski	1
15	L20500-10	17564	Upper MTG. BKT., Spring Cyl. R.H. Ski	1
16	L20500-11	17564	Check Cable Assy., Main Ski	2
17	L20500-12	17564	Safety Cable Assy., Main Ski	2
18	L20500-13	17564	Tail Ski Axle Adaptor	2
19	L20500-14	17564	Tail Ski Attach Bracket	2
20	L20500-15	17564	Spring Cylinder, Tail Ski	1
21	L20500-16	17564	Attach Fitting, Spring Cyl.	1
22	L20500-17	17564	Safety Cable Assy., Tail Ski	1
23	L20500-18	17564	Tail Wheel Bracket Kit, Tail Ski	1
24	L20500-18-1	17564	Tail Wheel BKT. L.H., Tail Ski	1

S

SEE DRAWNGS L20500 SHEETS 1 & 2 FOR ILLUSTRATED PARTS IDENTIFICATION

RIGHT & LEFT MAIN SKI
TAIL SKI

1.5.1
1.5.2

PARTS LIST

INDEX NUMBER	PART NUMBER	CODE IDENT. NO.	NOMENCLATURE	NUMBER REQUIRED
25	L20500-18-2	17564	Tail Wheel BKT. R.H. Tail Ski	1
26	L20500-18-3	17564	Spacer	2
27	D501	17564	Wheel Assy. (Lang) or 1840 Scott, Tail Ski	1
28	L20500-D501A	17564	Swivel Tao; Wheel Assy. (Lang)	2
29	30512-02	77294	Leaf Spring	2
30	30152-04	99294	Leaf Spring	2
31	A512		Spacer (Lang)	2
32	EB616-22	17564	Bolt	4
33	EB616-20	17564	Bolt	2
34	AN7-14A		Bolt	2
35	AN960-716		Washer	2
36	AN363-720		Nut	2
37	AN363-616		Nut	6
38	AN960-616		Washer	6
39	AN47-14		Eye Bolt	2
40	AN476-16		Eye Bolt	3
41	AN310-6		Nut	3
42	AN396-23		Clevis Pin	6
43	AN396-19		Clevis Pin	1
44	AN395-19		Clevis Pin	4
45	AN3-14A		Bolt	2
46	AN3-07A		Bolt	4
47	AN365-1032		Nut	6
48	380-3-2		Cotter Pin	10
49	L20500-19	17564	Lower Spring Cyl. Attach BKT. Tail Ski	1
50	AN26-21		Clevis Bolt	1
51	AN320-6		Nut	1
52	AN960-616L		Washer	1

SEE DRAWNGS L20500 SHEETS 1 & 2 FOR ILLUSTRATED PARTS IDENTIFICATION

RIGHT & LEFT MAIN SKI
TAIL SKI

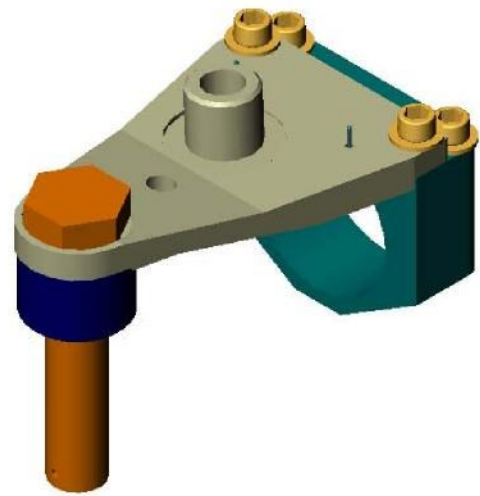
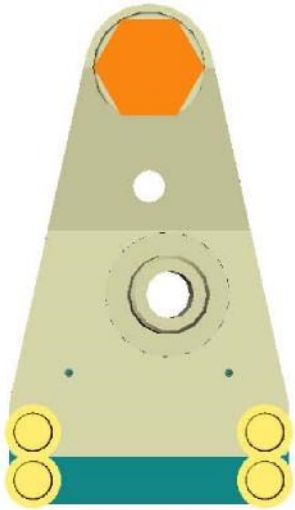
1.5.1
1.5.2

PARTS LIST

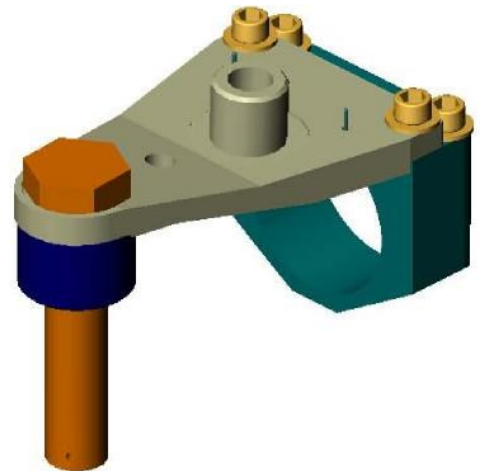
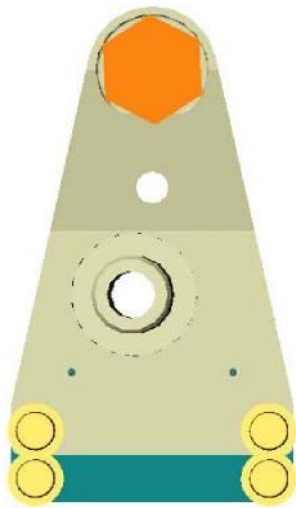
INDEX NUMBER	PART NUMBER	CODE IDENT. NO.	NOMENCLATURE	NUMBER REQUIRED
53	AN509-416R-16		Screw	1
54	AN509-416R-18		Screw	1
55	A3475-020-24A		Countersunk Washer (Tinnerman)	2
56	AN8-32		Bolt	1
57	AN4-7A		Bolt	6
58	AN5-6A		Bolt	2
59	AN5-7A		Bolt	8
60	AN5-10A		Bolt	8
61	AN310-8		Nut	1
62	AN365-428		Nut	8
63	AN365-524		Nut	3
64	AN960-416		Washer	8
65	AN960-516		Washer	19
66	NASS14P524-16		Screw	1
67	30185	17564	Countersunk Washer	1
70	528D378D050	17564	Washer Special	8
71	NAS148DH16		Bolt	2
72	MS2000C8		Washer	2
73	NAS144DH10		Bolt	4
74	AN316-5R		Nut	2
75	AN565FC524H12		Screw	2
76	AN46-14		Eyebolt	1
77	L20500-42	17564	Outboard Axle Adaptor (Navy type)	2
78	L20500-5M	17564	Ski Axle Outboard (Navy type)	2

SEE DRAWNGS L20500 SHEETS 1 & 2 FOR ILLUSTRATED PARTS IDENTIFICATION

L20500-7-1



L20500-7-2

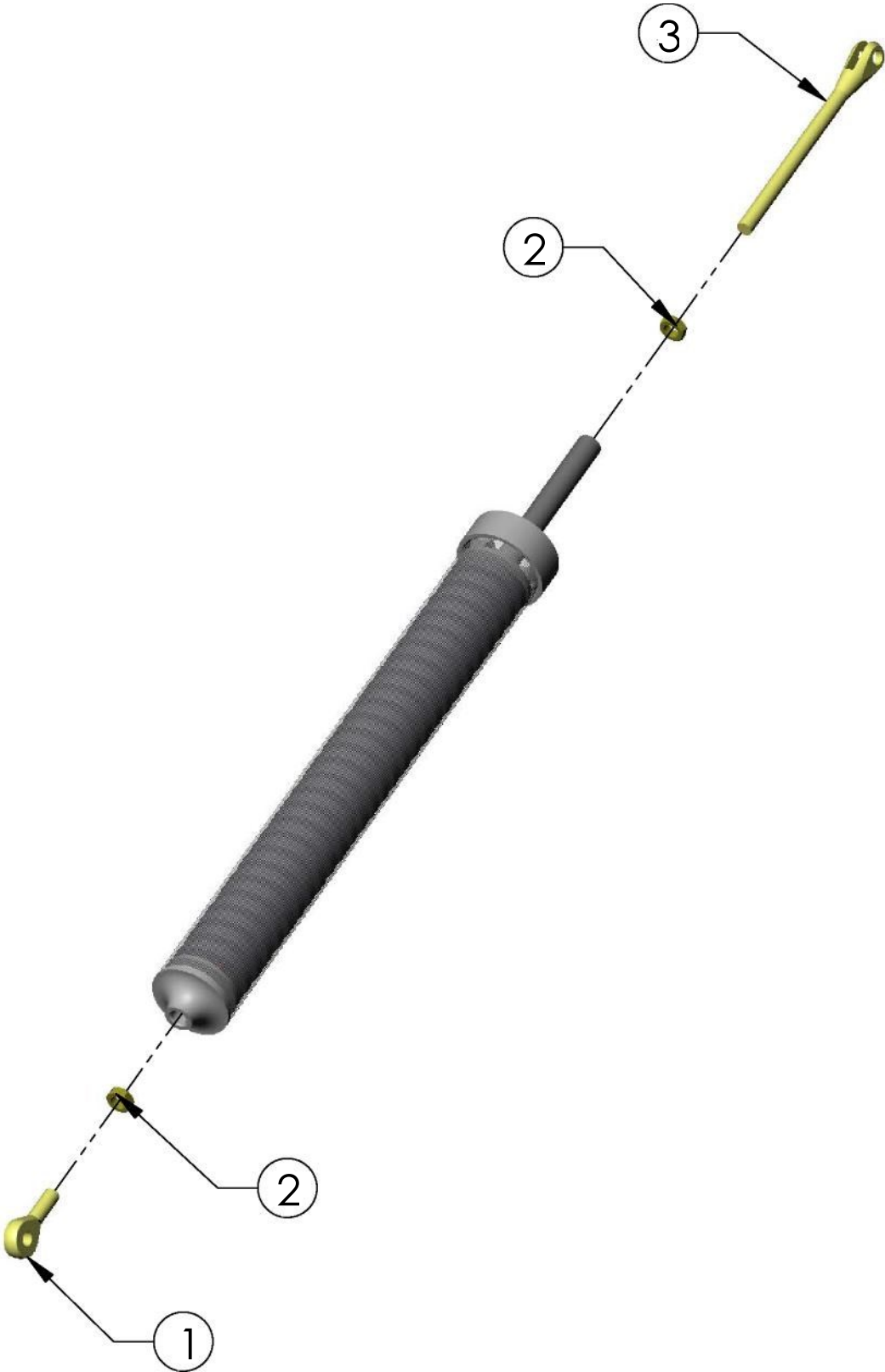


L20500-7-3



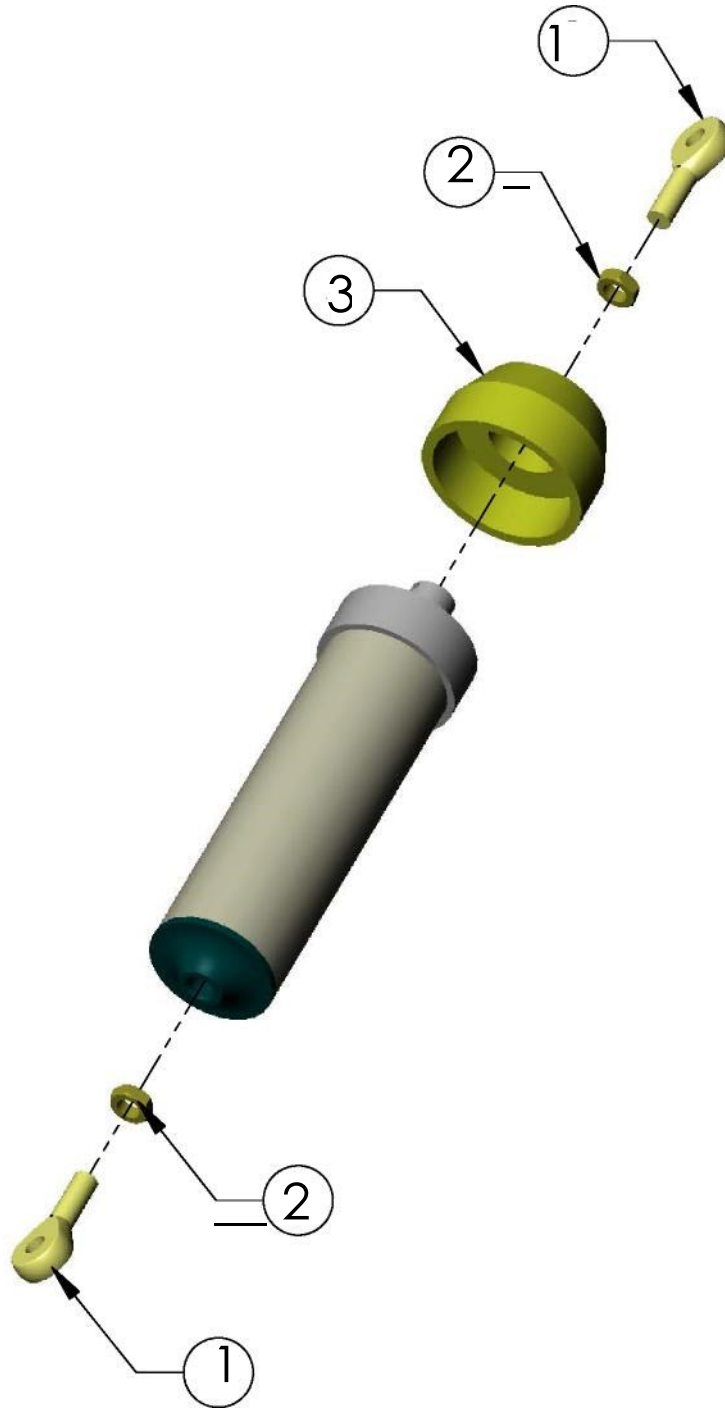
PARTS LIST

INDEX NUMBER	PART NUMBER	CODE IDENT. NO.	NOMENCLATURE	NUMBER REQUIRED
01	L20500-7-1	17564	Inboard Axle Adaptor Assy. LH	1
02	L20500-7-2	17564	Inboard Axle Adaptor Assy. RH	1
03	L20500-7-3	17564	Outboard Axle Adaptor Assy.	2



SPRING CYLINDER, MAIN SKI
PARTS LIST

INDEX NUMBER	PART NUMBER	CODE IDENT. NO.	NOMENCLATURE	NUMBER REQUIRED
1	HMX-6G		Rod End	1
2	AN316-7		Nut	2
3	L20500-8-8	17564	Fork End	1

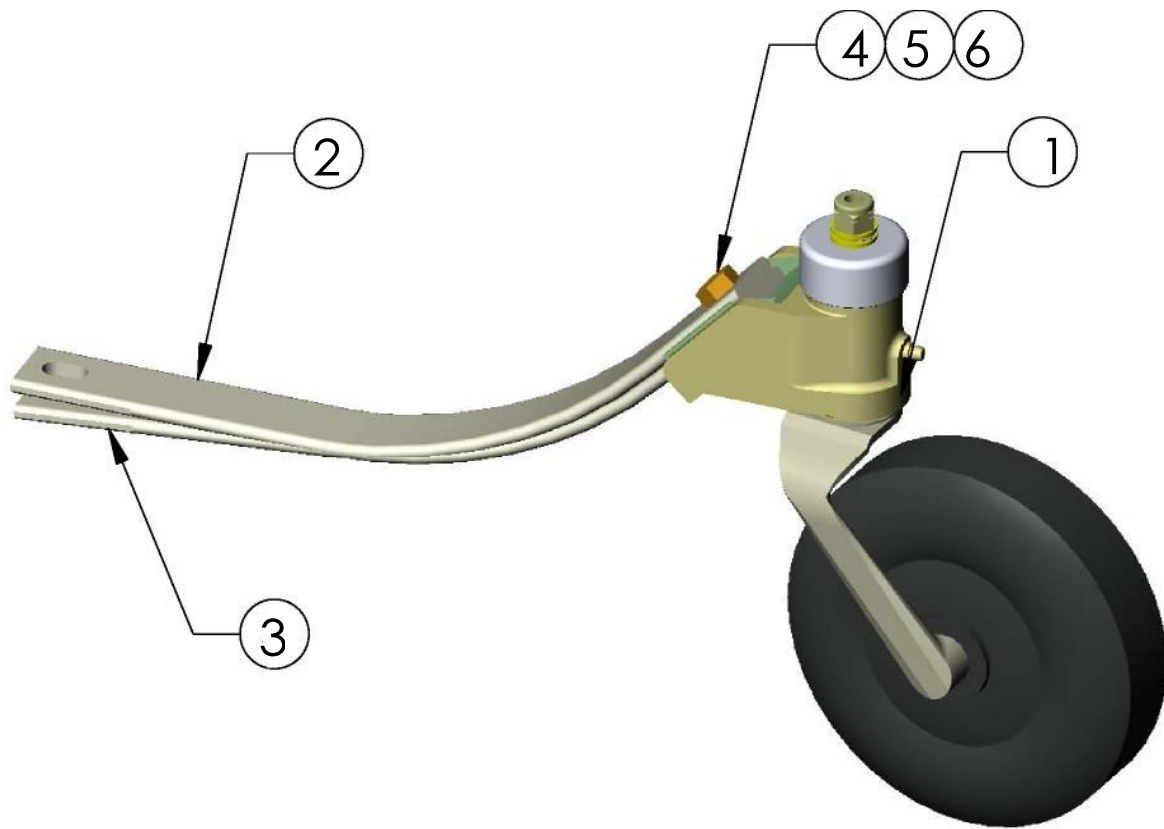


1.5.5

SPRING CYLINDER, TAIL SKI
PARTS LIST

1.5.5

INDEX NUMBER	PART NUMBER	CODE IDENT. NO.	NOMENCLATURE	NUMBER REQUIRED
1	HMX-6G		Rod End	2
2	AN316-7		Nut	2
3	L20500-15-10		Plastic Bumper	1



PARTS LIST

INDEX NUMBER	PART NUMBER	CODE IDENT. NO.	NOMENCLATURE	NUMBER REQUIRED
1	L20500-D501A		Tail Wheel Assy.	1
2	30512-02			
3	30512-04			
4	AN7-14A			
5	AN960-716		Washer	2
6	AN363-720		Nut	1

Section 2.0

MAINTENANCE AND GROUND HANDLING RESTRICTIONS

1. **DO NOT** – Push or Pull on skis to move aircraft
2. **DO NOT** – Subject to flame or high heat
3. **DO NOT** - Attempt to jack aircraft with skis installed
4. **DO NOT** – Subject to harsh solvents or caustic chemicals
5. **DO NOT** – Use skis as a tie down for the aircraft
6. **DO NOT** – Disassemble the Main Ski Spring Cylinder (Airglas Part No.# L20500-8)
7. **DO NOT** – Disassemble the Tail Ski Spring Cylinder (Airglas Part No.# L20500-15)
8. **DO NOT** – Attempt to change a main gear tire with the skis installed
9. **DO NOT** – Attempt to change a tail gear tire with the skis installed
10. **DO NOT** – Use standard wheel chocks with skis installed

Section 3.0

MAINTENANCE OPERATIONAL CHECKS

10-14 Check (10 hour or 14 day inspection)

1. **CHECK** – Force required to move main ski tail wheel (Airglas Part No. # L20500-D501A) sideways, force shall be 5-9 lbs (22.24 to 40 Newtons).
2. **CHECK**- Main landing gear skis (if installed) inspect for cracks, excessive wear, fractures and abrasions. Security of spring cylinders. Main ski safety and check cables for security (Airglas Part No.# L20500-12) & (Airglas Part No.# L20500-11).
3. **CHECK** – Main landing gear ski tail wheel spring for damage and security (Airglas Part No. # L20500-D501A).
4. **CHECK**- Tail landing gear skis (if installed) inspect for cracks, excessive wear, fractures and abrasions. Security of the spring cylinder (Airglas Part No. # L20500-15). Security of the Attach fitting (L20500-16). Security of the safety cable No. (Airglas Part No. # L20500-17). Security of the tail wheel assembly (Airglas Part No. # L20500-18).

Section 4.0 INSPECTION

500-Annual (500 hour or Annual inspection)

1. **INSPECT** – The main landing gear ski (Airglas Part No.# L20500-1&2) for excessive cracks, wear, fractures and abrasions. Inspect the bottom for cracks, scratches and excess wear. If damaged consult manufacturer. Lubricate tail wheel fittings with SuperLube Synthetic Grease (PTFE).
2. **INSPECT** – The tail landing gear ski (Airglas Part No.# L20500-3) for excessive cracks, wear, fractures and abrasions. Inspect the bottom for cracks, scratches and excess wear. If damaged consult manufacturer. Lubricate tail wheel fittings with SuperLube Synthetic Grease (PTFE).
3. **INSPECT** – The main landing gear safety cable (Airglas Part No.# L20500-12) for integrity and fraying. The main landing gear check cable (Airglas Part No.# L20500-11) for integrity and fraying. The main landing gear spring cylinder (Airglas Part No.# L20500-8) for cracks, dents, wear, fractures and abrasions. The main landing gear bracket assembly (Airglas Part No.# L20500-7-1, 7-2 & 7-3) for integrity, cracks, dents and excessive wear.
4. **INSPECT**- The tail landing gear ski safety cable (Airglas Part No.# L20500-17) for integrity and fraying. The tail landing gear spring cylinder & attach hardware (Airglas Part No.# L20500-15 & L20500-16) for cracks, dents, wear, fractures and abrasions.
5. **INSPECT**- The main landing gear ski axle assemblies (Airglas Part No.# L20500-5 and L20500-6) for cracks, dents, fractures and thread integrity.

6. INSPECT –The tail landing gear ski axle adapters (Airglas Part No.# L20500-13 & 14) for cracks, dents and fractures, attach hardware security.