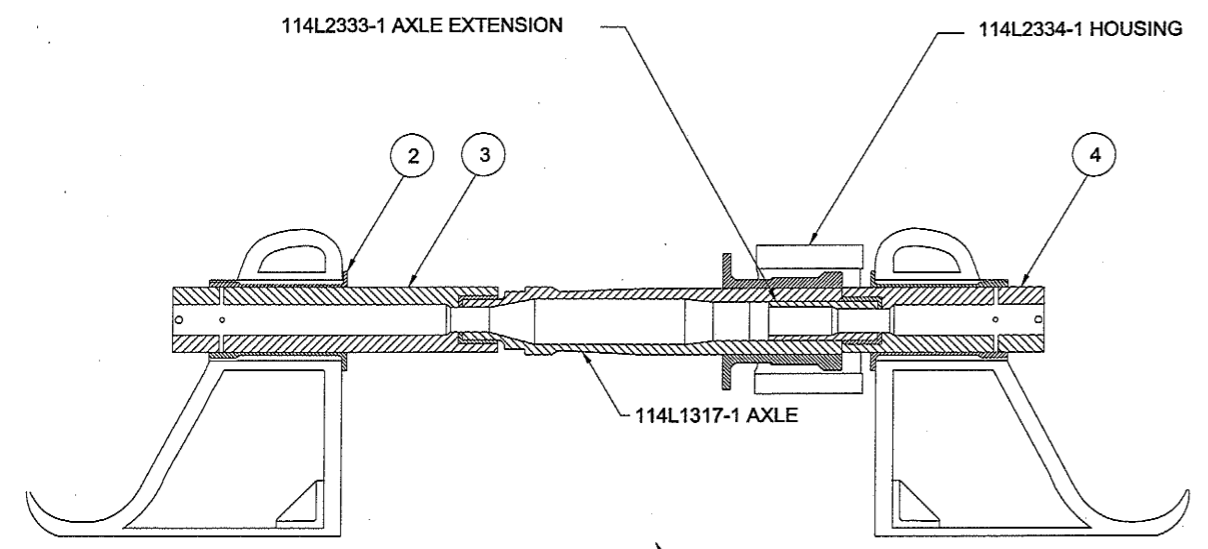
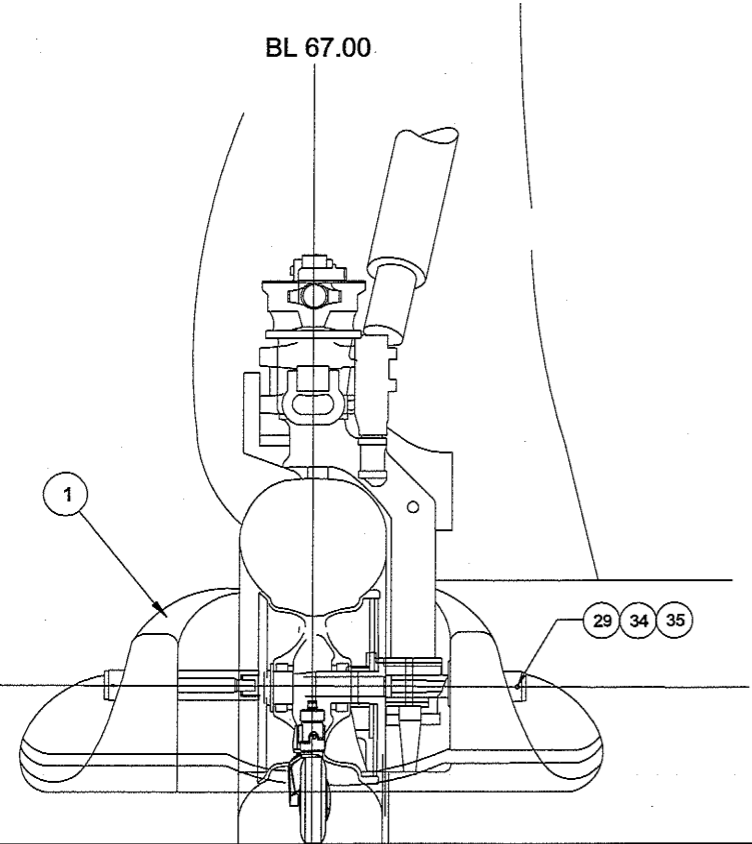


REVISIONS				
ZONE	LTR	DESCRIPTION	DATE	APPROVED
	A	ADD PARTS LIST	08 OCT 1965	WKL
	B	REMOVED PARTS 9,13,14 FROM LIM REMOVED PART 30512-04 FROM 12 & MADE IT PART 13 LIM, REMOVED DETAILS 8-10, ADDED REF CALLOUT FOR AXLE & PISTON TUBE PER PTM 8-4432- S-1071	20 APR 1966	WKL
	C	ADDED ITEM 33, MODIFIED ITEM 6, PART L44000-13-4, UPDATED DWG PER BOEING LETTER S-4432-2-8091 SEPT. 5, 1970	20 AUG 1967	WKL
	D	ADD NOTE NO. 4 & L44000-D501A	22 AUG 1985	CED
	E	ELECTRONIC DWG CREATED	23 AUG 2011	CED
	F	PART NUMBERS ADDED/ CHANGED	28 AUG 2017	CB



SECTION B-B, 90 DEG HALF SCALE



VIEW LOOKING FWD- AFT SKI L.H.
VIEW A-A

NOTE

1. SKI INTERCHANGABLE FROM LEFT TO RIGHT BY INTERCHANGING PARTS NUMBERED 3 AND 4, AND MOVING PART NUMBER 6 INBOARD.
2. TIGHTEN AXLES (ITEMS 3&4) UNTIL THERE IS NO CLEARANCE. BACK AXLES (ITEMS 3&4) OUT UNTIL AN3-27A BOLT CAN BE INSTALLED.
3. PLACE SHACKLE (AN115-46) OF CHECK CABLE ASSY. (L44000-13-7) ON INBOARD SIDE OF UPPER SPRING CYL. MOUNTING BRACKET (L44000-13-4) ATTACH TAB OF CHECK CABLE ASSY. (L44000-13-7) TO FORWARD LEAF SPRING BOLT.
4. NO PLATING REQUIRED ON SKI AXLES (ITEMS 3&4) USED ON SKI SERIAL NO. 170 & ON, OR OTHER SKIS WITH P/N L44000-11-4 MADE OF AMPCO M-4 ALUMINUM BRONZE.

NO.	QTY.	CODE IDENT. NO.	PART NO.	DISCRIPTION	STOCK SIZE	MATL.	MATL. SPEC.	UTS	FINISH	WT	ZONE
36	1		A512	Spacer for Tailwheel Springs							
35	2		AN365-1032	NUT							
34	2		AN960-10	WASHER							
33	2		L44000-13-7	CHECK CABLE ASSY.							
32	1		AN26-12	CLEVIS BOLT							
31	2		H20-6	NUT							
30	3		AN380-3-2	COTTER PIN							
29	2		AN3-27A	BOLT							
28	1		AN960-616	WASHER							
27	1		AN960-716	WASHER							
26	5		AN960-616L	WASHER							
25	1		AN960-516	WASHER							
24	1		AN365-720	NUT							
23	3		AN363C-616	NUT							
22	2		AN365-428	NUT							
21	3		AN320-6	NUT							
20	2		AN26-21	CLEVIS BOLT							
19	1		AN365-524	BOLT							
18	1		AN7-14A	BOLT							
17	1		AN395-17	CLEVIS PIN							
16	3	17564	EB616-20	BOLT							
15	2		AN4-14A	BOLT							
14	1		AN5-7A	BOLT							
13	1	17564	L20500-D501A-6	LEAF SPRING							
12	1	17564	L20500-D501A-5	LEAF SPRING							
11	1	17564	AN47-SPL	EYE BOLT							
10	1	17564	L44000-13-5	SAFETY CABLE & SHOCK RING ASSY.							
9	1	17564	L44000-19	SPRING CYL.							
8	2	17564	L44000-11-10	TAB							
7	1	17564	L44000D501A	TAILWHEEL ASSY							
6	1	17564	L44000-13-5	LOWER SPRING CYL. MOUNTING BRACKET							
5	1	17564	L44000-13-4	UPPER SPRING CYL. MOUNTING BRACKET							
4	1	17564	L44000-13-3	INBD AXLE ASSY.							
3	1	17564	L44000-13-2	OUTBD AXLE ASSY.							
2	2	17564	L44000-11-4	AXLE BUSHING							
1	1	17564	L44000-4	BASIC MOULDING							
		17564	L44000-13	SKI ASSY	SKI C.G.=3" FWD OF AXLE CL					WT=175LBS	
										CALC.	
										ACT	

LIST OF MATERIALS

UNLESS OTHERWISE SPECIFIED DIMENSIONS ARE IN INCHES TOLERANCES EXCEPT AS NOTED DECIMALS .XX ± .03 ANGLES .XX ± .03

HEAT TREAT: MATL GOV. SPEC STEEL MIL-H-4875 ALUM. MIL-H-4868 MAG CAST MIL-H-4857

Approved by: WKL
Checked by:
Drawn by: PS
Date: OCT 02, 1965

Airglas, Inc.
Anchorage, Alaska

SKI ASSEMBLY AFT
INSTL OF

Size B Code Ident.No. 17564 L44000-13
Scale 00 NOT SCALE Sheet 2 OF 2

114L2310 CH-47A,B,C USED ON NEXT ASSY APPLICATION

*THIS TECHNICAL DATA FURNISHED UNDER UNITED STATES GOVERNMENT CONTRACT NO. DAAJ01-71-C-0437 (P1F), SHALL NOT, WITHOUT THE WRITTEN PERMISSION OF AIRGLAS, INC. BE EITHER (a) USED, RELEASED IN WHOLE OR IN PART OUTSIDE THE GOVERNMENT. (b) USED IN WHOLE OR PART BY THE GOVERNMENT FOR MANUFACTURE OR (c) USED BY A PARTY OTHER THAN THE GOVERNMENT, EXCEPT FOR: (1) EMERGENCY REPAIR OR OVERHAUL WORK ONLY, OR FOR THE GOVERNMENT, WHERE THE ITEM OR PROCESS CONCERNED IS NOT OTHERWISE REASONABLY AVAILABLE TO ENABLE TIMELY PERFORMANCE OF THE WORK, PROVIDED THAT THE RELEASE OR DISCLOSURE HEREOF OUTSIDE THE GOVERNMENT, AS THE INTEREST OF THE UNITED STATES MAY REQUIRE, ONLY FOR INFORMATION OR EVALUATION WITHIN SUCH GOVERNMENT OR FOR EMERGENCY REPAIR OR OVERHAUL WORK OR FOR SUCH GOVERNMENT UNDER THE CONDITION OF ABOVE. THIS LEGEND SHALL BE MARKED ON ANY REPRODUCTION HEREOF IN WHOLE OR PART.