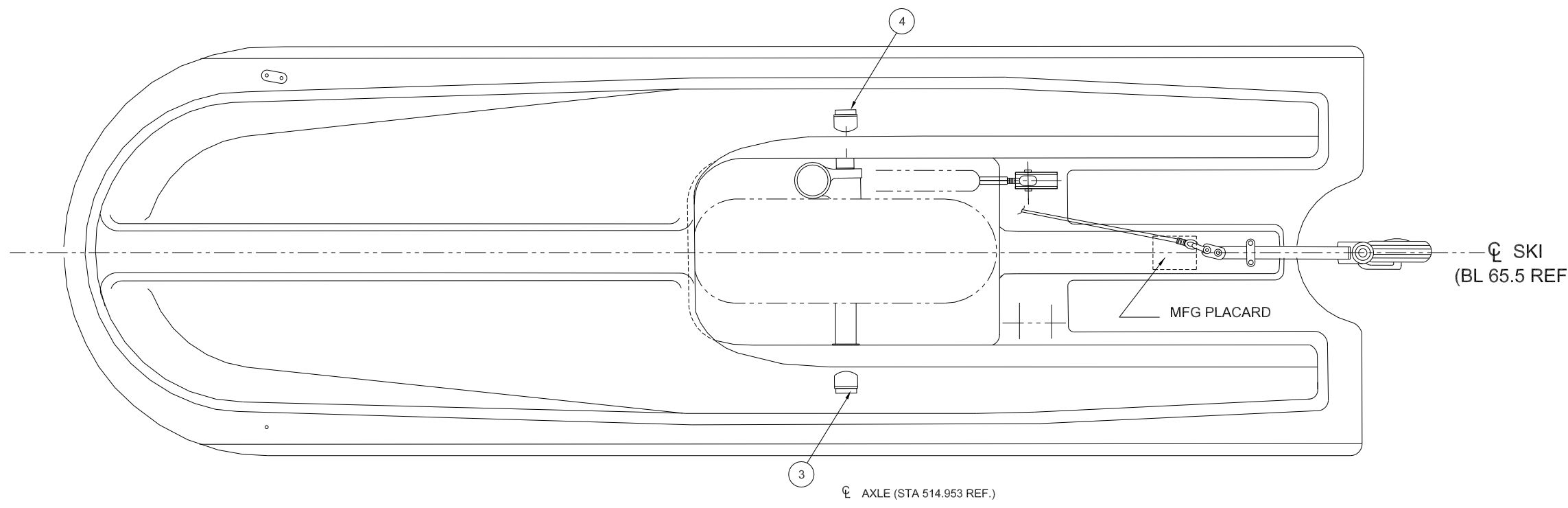
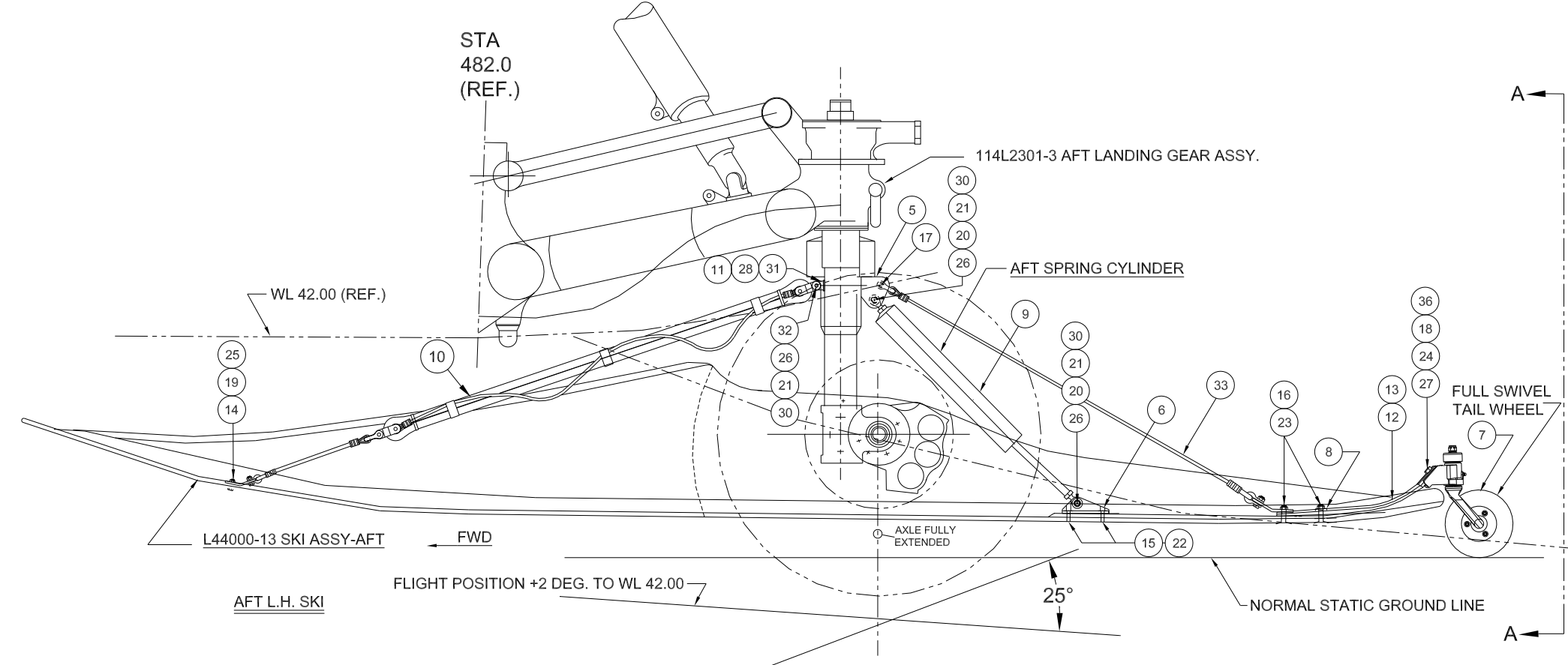


REVISIONS				
ZONE	LTR	DESCRIPTION	DATE	APPROVED
	A	ADD PARTS LIST	08 OCT 1965	WKL
	B	REMOVED PARTS 9,13,14 FROM L/M REMOVED PART 30512-04 FROM 12 & MADE IT PART 13 L/M. REMOVED DETAILS -9,-10. ADDED REF CALLOUT FOR AXLE & PISTON TUBE PER PTM 8-4432- S-1071	20 APR 1966	WKL
	C	ADDED ITEM 33, MODIFIED ITEM 5, PART L44000-13-4. UPDATED DWG PER BOEING LETTER S-4432-2-8091 SEPT. 5, 1970	20 AUG 1967	WKL
	D	ADD NOTE NO. 4 & L44000-D501A	22 AUG 1985	CED
	E	ELECTRONIC DWG CREATED PART NUMBERS CHANGED	23 AUG 2011	CED
	F	PART NUMBERS ADDED/ CHANGED	28 AUG 2017	CB



- NOTE**
- SKI INTERCHANGABLE FROM LEFT TO RIGHT BY INTERCHANGING PARTS NUMBERED 3 AND 4, AND MOVING PART NUMBER 6 INBOARD.
  - TIGHTEN AXLES (ITEMS 3&4) UNTIL THERE IS NO CLEARANCE. BACK AXLES (ITEMS 3&4) OUT UNTIL AN3-27A BOLT CAN BE INSTALLED.
  - PLACE SHACKLE (AN115-46) OF CHECK CABLE ASSY. (L44000-13-7) ON INBOARD SIDE OF UPPER SPRING CYL. MOUNTING BRACKET (L44000-13-4) ATTACH TAB OF CHECK CABLE ASSY. (L44000-13-7) TO FORWARD LEAF SPRING BOLT.
  - NO PLATING REQUIRED ON SKI AXLES (ITEMS 3&4) USED ON SKI SERIAL NO. 170 & ON, OR OTHER SKIS WITH P/N L44000-11-4 MADE OF AMPCO M-4 ALUMINUM BRONZE.



\*THIS TECHNICAL DATA FURNISHED UNDER UNITED STATES GOVERNMENT CONTRACT NO. DAAJ01-71-C-0437 (P1F), SHALL NOT, WITHOUT THE WRITTEN PERMISSION OF AIRGLAS, INC. BE EITHER (a) USED, RELEASED IN WHOLE OR IN PART OUTSIDE THE GOVERNMENT, (b) USED IN WHOLE OR PART BY THE GOVERNMENT FOR MANUFACTURE OR (c) USED BY A PARTY OTHER THAN THE GOVERNMENT, EXCEPT FOR: (1) EMERGENCY REPAIR OR OVERHAUL WORK ONLY, OR FOR THE GOVERNMENT, WHERE THE ITEM OR PROCESS CONCERNED IS NOT OTHERWISE REASONABLY AVAILABLE TO ENABLE TIMELY PERFORMANCE OF THE WORK, PROVIDED THAT THE RELEASE OR DISCLOSURE HEREOF OUTSIDE THE GOVERNMENT, AS THE INTEREST OF THE UNITED STATES MAY REQUIRE, ONLY FOR INFORMATION OR EVALUATION WITHIN SUCH GOVERNMENT OR FOR EMERGENCY REPAIR OR OVERHAUL WORK OR FOR SUCH GOVERNMENT UNDER THE CONDITION OF ABOVE. THIS LEGEND SHALL BE MARKED ON ANY REPRODUCTION HEREOF IN WHOLE OR PART.

UNLESS OTHERWISE SPECIFIED DIMENSIONS ARE IN INCHES TOLERANCES EXCEPT AS NOTED DECIMALS X ± .1 ANGLES XX ± .03 X ± .5° XXX ± .005 X ± .5°		Airglas, Inc. Anchorage, Alaska	
HEAT TREAT MATL. GOV. SPEC STEEL MIL-H-6875 ALUM. MIL-H-6088 MAG CAST MIL-H-6857		Approved by: WKL	
114L2310 CH-47A,B,C NEXT ASSY USED ON		Checked by:	
APPLICATION		Drawn by: PS	
		Date: OCT 02, 1965	
		Size B Code Ident.No. 17564	
		L44000-13	
		Scale DO NOT SCALE	
		Sheet 1 OF 2	