

SKI SPECIFICATIONS

INSTALLATION, MAINTENANCE, SERVICE INSTRUCTIONS & ILLUSTRATED PARTS LIST

AIRGLAS MANUAL NO. L 44000-105 (Rev G)

FOR SKI SERIAL NO.'S 1 THRU 1000

AIRGLAS

MODEL L 44000-11 FSN 1630-912-3166
SKI ASSEMBLY, LANDING GEAR (FWD)

&

MODEL L 44000-13 FSN 1630-912-3167
SKI ASSEMBLY, LANDING GEAR (AFT)

FOR

BOEING VERTOL CH47A, B, C HELICOPTER

CODE INDENT. NO. 17564

AIRGLAS, INC. ANCHORAGE, ALASKA 99502

Manual No. L 44000-105 (Rev G)

Airglas, Inc.
Anchorage, Alaska 99502

Airglas Model L 44000-11 & 13 Skis



Airglas Model L 44000-11 & -13 Skis

SKI SPECIFICATION

Airglas Model L 44000 for CH47A, B, C Helicopter

Floation at 44,000 lb. Gross Weight approx. 2.25 lb. per sq. inch of ski area.

FORWARD SKI

-AIRGLAS P/N L44000-11

Dimensions -----137" x 48"
Approx area per ski -----5800 sq. inches
Max weight per ski -----225 lbs.
Area distribution -----60% ahead of axle
C.G. of ski -----9.5 inches ahead of axle

AFT SKI

-AIRGLAS P/N L 44000-13

Dimensions -----114.8" x 36"
Approx area per ski -----3700 sq. inches
Max weight per ski -----175 lbs.
Area distribution -----60% ahead of axle
C.G. of ski -----3 inches ahead of axle

CONSTRUCTION

-Main body Fiberglas Reinforced Vinyl Ester Resin
Top Finish- ISO Polyester Gel Coat
Bottom Finish- Abrasion Resistant Gel Coat coated,
with a Teflon Urethane Coating.

GENERAL DESIGN

-The ski is a fixed penetration wheel ski with wheels
penetrating six inches in the snow three inches under
load on a hard surface. A full swivel tail wheel is
spring mounted on the aft of each ski to protect the
ski during ground handling and allow the use of the
most simple type of rigging system to maintain the
flight attitude of the ski.

MAINTENANCE AND SERVICE INSTRUCTIONS

LUBRICATION:

1. Main pivot points on ski are lubricated with self-lubricating oilite Bearings and should not require any further lubrication.
2. Tail wheel swivel bushings and wheel bearings should be lubricated with appropriate type available grease at normal aircraft periodic inspections.

DAILY INSPECTION:

1. Check shock rings on forward and aft safety cables. The shock rings should have a normal service life of 12 months, but may be damaged in a very short period of time by hydraulic fluid or any petroleum base oil. Damage will be quite noticeable as diameter of shock ring will be reduced where the rubber strands have been attacked by the oil.
2. Check all hardware and safety wire for proper installation.

TOP SURFACE MAINTENANCE:

The surface of this ski has a very durable plastic coating that is not affected by gas, oil or environmental conditions. It may be brightened up with rubbing compound and wax occasionally but should not require painting. (NOTE) Small hairline check marks may appear in this coating at stress points. These do not affect the strength of the ski in any way and ARE NOT to be considered cracks as they are only in the surface coating and don't extend into the laminate.

BOTTOM SURFACE MAINTENANCE:

1. The Teflon urethane coating allows maximum sliding in all snow conditions. No wax is required. Additional coats may be applied by brush or spray when necessary.
2. When bottom surface becomes excessively scratched or worn, it may be sanded down with a small belt or disc sander and recoated with a brush application of the High Abrasion Gel coat. This is allowed to cure at room temperature and is then roughed up, and coated with Teflon urethane coating. A kit for this process is obtainable from manufacturer. SEE REPAIR APPENDIX FOR MORE INFO.

Airglas Model L44000-11 & -13 Skis

Maintenance and Service Instructions (cont.)

Types of possible damage:

- a. Negligible Damage:
 1. Small nicks, scratches or abraded areas in top or bottom of ski.
- b. Repairable Damage:

SEE REPAIR APPENDIX FOR DETAILS
- c. Damage Necessitating Replacement:

SEE REPAIR APPENDIX FOR DETAILS

FORWARD SKI INSTALLATION INSTRUCTIONS

Ski Assembly Forward- Installation of

Airglas Part No. L44000-11

2 Each Required Per Aircraft

NOTE: (Left and Right Forward Skis Completely Interchangeable)

1. To Install Forward Skis: Micrometer measure and visually inspect all 4 forward wheel axle stubs for any areas around the diameter, that show upset, out of roundness or raised nicks. Use a fine, finishing with a fine strip of emery cloth, to polish axles that show damage. Make a final micrometer checks to make certain there are no areas that “Mic” over the axle stub diameter. Proceed with ski installation.

(A) Jack Method: Slide ski on with aft section of the forward ski sliding under wheels until wheels are into wheel well. (PREFERRED METHOD)

1. Release all air pressure from forward strut.
2. Lock strut so they will not extend when aircraft is jacked.
3. Jack aircraft at front fuselage jack point, IAW Aircraft Maintenance Manual. Lift aircraft as necessary to allow installation of the forward ski.
4. Slide ski on with aft section of forward ski sliding under wheels until wheels are into wheel well, **then follow Installation of Forward Ski Axles below.**

(B) Roll-on-Method: Remove tail wheels **L44000-D501A** from skis-set skis ahead of wheels and hold in place while towing aircraft forward with the wheels rolling up thru the aft channel of the ski into the wheel well. (ALTERNATE METHOD)

Caution: The ski structure must be supported when using the roll-on method. The gaps in the aft portion of the wheel well and the aft edge of the ski, should be supported with wood or similar material. Failure to support the gaps could cause damage to the ski structure.

NOTE: A thin coating of low temperature grease must be spread on outside diameter, including thread area, of all ski axles just prior to inserting axles into ski bushings. Avoid dirt contamination.

Installation of Forward Ski Axles:

Lift the ski into position with assistance. Install the ski axle assemblies No. L44000-11-3 thru the inboard and outboard axle bushings No. L44000-11-4 molded into the ski and unto the main landing gear axle stubs. Supporting the ski screw the ski axle assemblies until they are both fully seated on the landing gear axles. Loosen the ski axle assemblies until the holes in the ski axle assemblies and the ski axle bushings align then install the bolts AN3-27A, the washers AN960-10 and the nuts AN365-1032. Once ski is installed lower the aircraft, remove the jack and the locks. Then service the struts.

2. Attach swivel fitting L44000-11-5 to forward unused forward landing gear upper scissor pivot point with 2 each L44000-11-6 end fittings. Securing with thru bolt AN3-44, AN960-10 washer and AN365-1032 nut. (To install the long AN3-44 bolt, it will be necessary to jack the aircraft by the forward fuselage jack point high enough so the upper landing gear scissor point is above the tire allowing the long AN3-44 bolt to be slid into place. If a jack is not available, this also may be accomplished by blowing up the main landing gear shock struts to this same height

Airglas Model L 44000-11 Ski

Ski Assembly Forward – Installation of: Cont.

3. Install spring cylinder Part No. L44000-17 with the large end to swivel fitting L44000-11-5 with AN26-23 clevis bolt, AN960-616 washer and AN320-6 nut and cotter key. Then attach small end to AN47-14 eye bolt in forward top surface of ski with bushing L44000-17-10, AN25-15 and AN320-5 nut and cotter key.
4. Remove tie down ring on side of landing gear and slip the steel rings on the top end of the safety cable and shock ring assembly L44000-11-8
(NOTE: The L44000-11HD uses a double bungee safety cable assembly P/N L44000-11-8HD) and check cable assembly L44000-11-7 over the tie down ring in their respective forward and aft positions, then reinstall the tie down ring in its original position and safety. Next, secure the attach tab on the lower end of the check cable assembly L44000-11-7 to forward tail wheel spring retaining bolt EB616-21 with AN363C616 nut. **(NOTE: The L44000-11HD uses a spring retaining bolt EB616-24 with a AN363C616 nut)** The lower end of the safety cable and shock ring assembly L44000-11-8 may now be secured to the hole provided in the ski tip with AN5-7A bolt, AN365-524 nut and washer. **(NOTE: The L44000-11-8HD safety cable which was not installed by the manufacturer, i.e. a modification of a L44000-11 to a L44000-11HD, will require a AN970-5 washer to be installed under an AN-5-10 bolt, and secured using a AN365-524 nut)** (It will be necessary to stretch the shock ring considerably to install the Safety cable to the ski). One method includes positioning a piece of aerospace ground equipment in line with attachment hole and using a ratcheting strap to stretch the bungee enough to allow for easy installation of attachment tab. An alternate method uses a clamp device that is attached to tip of ski, with a method to use a ratcheting strap, to allow for stretching of safety cable.

NOTE: Removal of skis is a reverse of the installation process steps (4,3,2,1). Install jack prior to completing reverse step 1 of the removal.

Airglas Model L44000-13 Ski
AFT SKI INSTALLATION INSTRUCTIONS

Ski Assembly Aft – Installation of
Airglas Part No. L44000-13
2 Each Required Per Aircraft
(Left and Right Aft Skis Completely Interchangeable)

1. To Install Aft Skis: Micrometer Measure and visually inspect all 4 aft wheel axle stubs for any Areas around the diameter, that show upset, out of roundness or raised nicks. Use a fine file, finishing with a fine strip of emery cloth, to polish axles that show damage. Make a final micrometer checks to make certain there are no areas that “Mic” over the major axle stub diameter. Proceed with ski installation.
 - (A) Jack Method: (PREFERRED METHOD)
 - (1) Release all air pressure from aft struts.
 - (2) Lock struts so they will not extend when aircraft is jacked.
 - (3) Jack aircraft at aft fuselage jack points, IAW Aircraft Maintenance Manual. Lift aircraft as necessary to allow installation of aft ski
 - (4) Pivot landing gear axle 90 degrees. It will be necessary to release centering lock pin to do this. Slide ski on with aft section of ski sliding under wheels until wheels are into wheel well, **then follow Installation of Aft Ski Axles below.**

(B) Roll-on-Method: (ALTERNATE METHOD)

- (1.) Remove tail wheels **L44000-D501A** from ski- set skis ahead of wheels and hold in place while towing aircraft forward with wheels rolling up thru the aft channel of the ski into the wheel well.

Caution: The ski structure must be supported when using the roll-on method. The gaps in the aft portion of the wheel well and the aft edge of the ski, should be supported with wood or similar material. Failure to support the gaps could cause damage to the ski structure.

Note: A thin coating of low temperature grease must be spread on outside diameter, including thread area, of all ski axles just prior to inserting axles into ski bushings. Avoid dirt contamination.

Installation of Aft Ski Axles:

Lift ski into position and slide ski axles No. L44000-13-2 outboard and L44000-13-3 inboard thru their respective axle bushings No. L44000-11-4 molded in ski and into the stubs on the inboard and outboard end of the aft landing gear of the aircraft. These ski axles can be slid in from both sides of the ski far enough to hold ski up in position and then screwed in until they bottom on axle stubs on the landing gear and back off to nearest lock pin hole and lock in place with AN3-27A bolt, AN960-10 washer and a AN365-1032 nut.

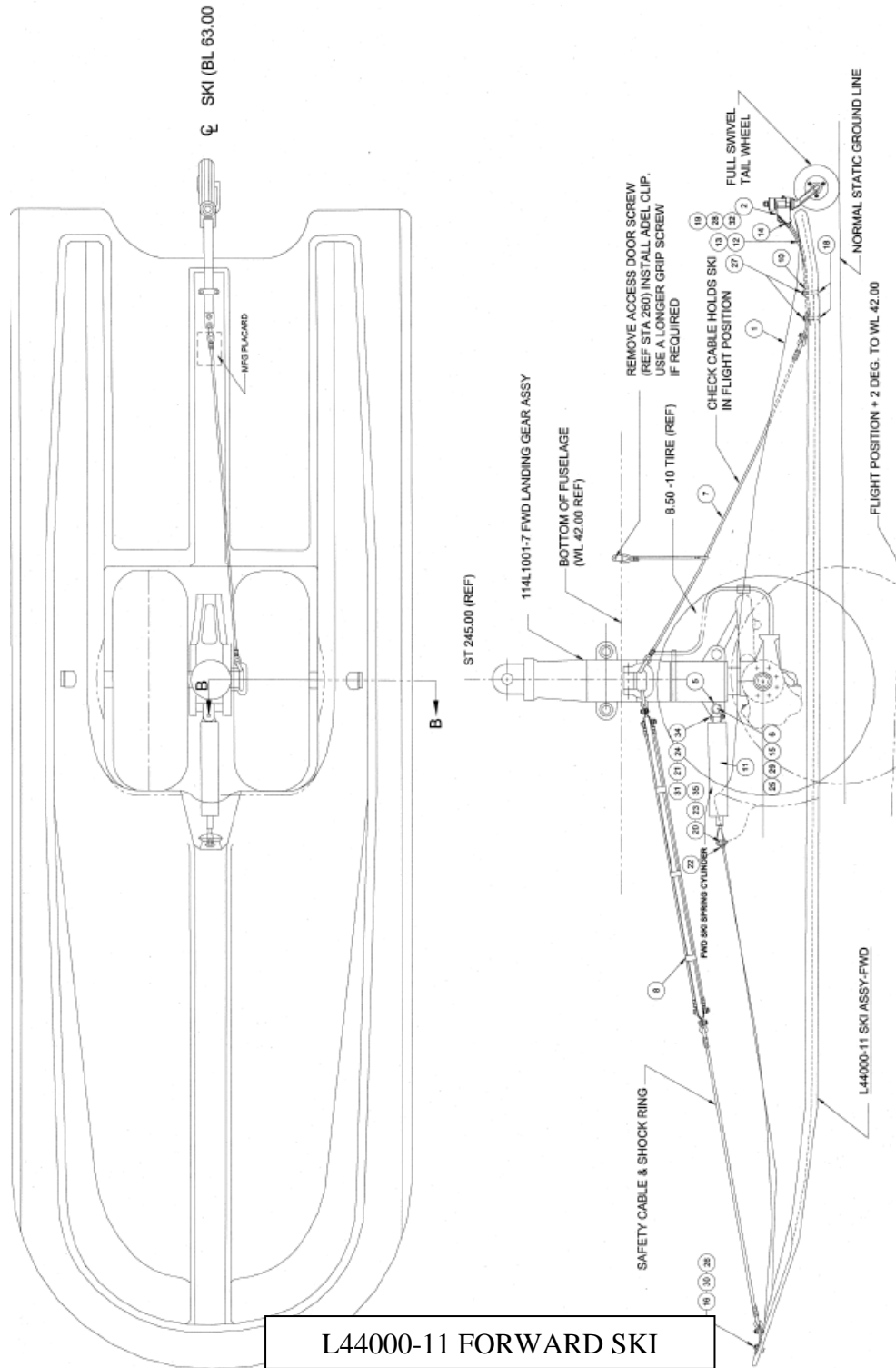
Once the ski is installed, lower the aircraft and remove the jacks and the locks. Move the landing gear back to its normal/ original position, then service the struts.

Airglas Model L 44000-13 Ski Ski Assembly Aft – Installation of: Cont.

2. Attach aft spring cylinder upper mounting bracket L44000-13-4 to aft side of aft landing gear leg by removing AN6 bolt that runs forward and aft thru gear leg about 11” up from CL of axle. Installing special AN47 eye bolt with head facing forward and retaining bracket L44000-13-4 in place on thread end of eye bolt with AN960-616L washer and H20-6 nut.
3. Attach upper end of safety cable and shock ring assembly L44000-13-6 to eye of special AN47 eye bolt installed in landing gear leg with AN26-12 clevis bolt, AN960-616 washer, AN320-6 nut and cotter pin. The lower end of the safety cable and shock ring assembly L44000-13-6 may now be secured to the hole provided in the inboard edge of the ski about 18” from the tip with AN5-7A bolt, AN960-516 washer and AN365-524 nut. (It will be necessary to stretch the shock ring considerably to do this.) One method includes positioning a piece of aerospace ground equipment in line with attachment hole and using a ratcheting strap to stretch the bungee enough to allow for easy installation of attachment tab. An alternate method uses a clamp device that is attached to tip of ski, with a method to use a ratcheting strap, to allow for stretching of safety cable.
4. Install spring cylinder No. L44000-19 with Top (large end) to L44000-13-4 bracket assembly previously installed on aft side of aft landing gear, with AN26-21 clevis bolt, AN960-616L washer, AN320-6 nut and cotter pin. Then attach lower end of cylinder to L44000-13-5 bracket assembly on ski with AN26-21 clevis bolt, AN960-616 washer, AN320-6 nut and cotter pin. Now attach the rear check P/N L44000-13-7 to the inboard upper hole in the aft spring cylinder mounting bracket P/N L44000-13-4 with AN395-17 clevis pin and cotter pin. Next, secure the attach tab on the lower end of check cable assembly. L44000-13-7 to forward tail wheel spring retaining bolt EB616-20 with AN363C616 nut.

NOTE: Removal of skis is a reverse of the installation process steps (4,3,2,1). Install jack prior to completing reverse step 1 of the removal.

Airglas Model L44000-11 Ski



L44000-11 FORWARD SKI

Airglas Model L44000-11 Ski

Fig. No. 1

35	1		AN380-2-2	COTTER PIN															
34	1		AN380-3-3	COTTER PIN															
33	2		AN3-27A	BOLT															
32	1		AN960-716	WASHER															
31	2		AN960-816L	WASHER															
30	1		AN960-516	WASHER															
29	4		AN960-10	WASHER															
28	1		AN365-720	NUT															
27	3		AN363C-616	NUT															
26	1		AN365-524	NUT															
25	3		AN365-1032	NUT															
24	1		AN320-6	NUT															
23	1		AN320-5	NUT															
22	1		AN47-14	EYE BOLT															
21	1		AN26-23	CLEVIS BOLT															
20	1		AN25-15	CLEVIS BOLT															
19	1		AN7-14A	BOLT															
18	3	17564	EB616-21	BOLT															
17			(RESERVED)																
16	1		AN5-7A	BOLT															
15	1		AN3-44A	BOLT															
14	1		A512	Spacer, Tailwheel Leaf Spring															
13	1	17564	L20500-D501A-6	LEAF SPRING															
12	1	17564	L20500-D501A-5	LEAF SPRING															
11	1	17564	L44000-17	FWD SPRING CYL.															
10	2	17564	L44000-11-10	TAB															
9			(RESERVED)																
8	1	17564	L44000-11-8	SAFETY CABLE															
7	1	17564	L44000-11-7	CHECK CABLE															
6	2	17564	L44000-11-6	END FITTING															
5	1	17564	L44000-11-5	SWIVEL FITTING															
4	2	17564	L44000-11-4	AXLE BUSHING															
3	2	17564	L44000-11-3	SKI AXLE ASSY.															
2	1	17564	L44000-D501A	TAILWHEEL ASSY															
1	1	17564	L44000-2	BASIC MOULDING															
	1	17564	L44000-11	SKI ASSY FWD.															
NO.	QTY.	CODE IDENT. NO.	PART NO.	DISCRPTION	STOCK SIZE	MATL.	MATL. SPEC.	UTS		FINISH	CALC.	ACT	ZONE						
								1000						UNIT	WT				

Airglas Model L44000-13 Ski

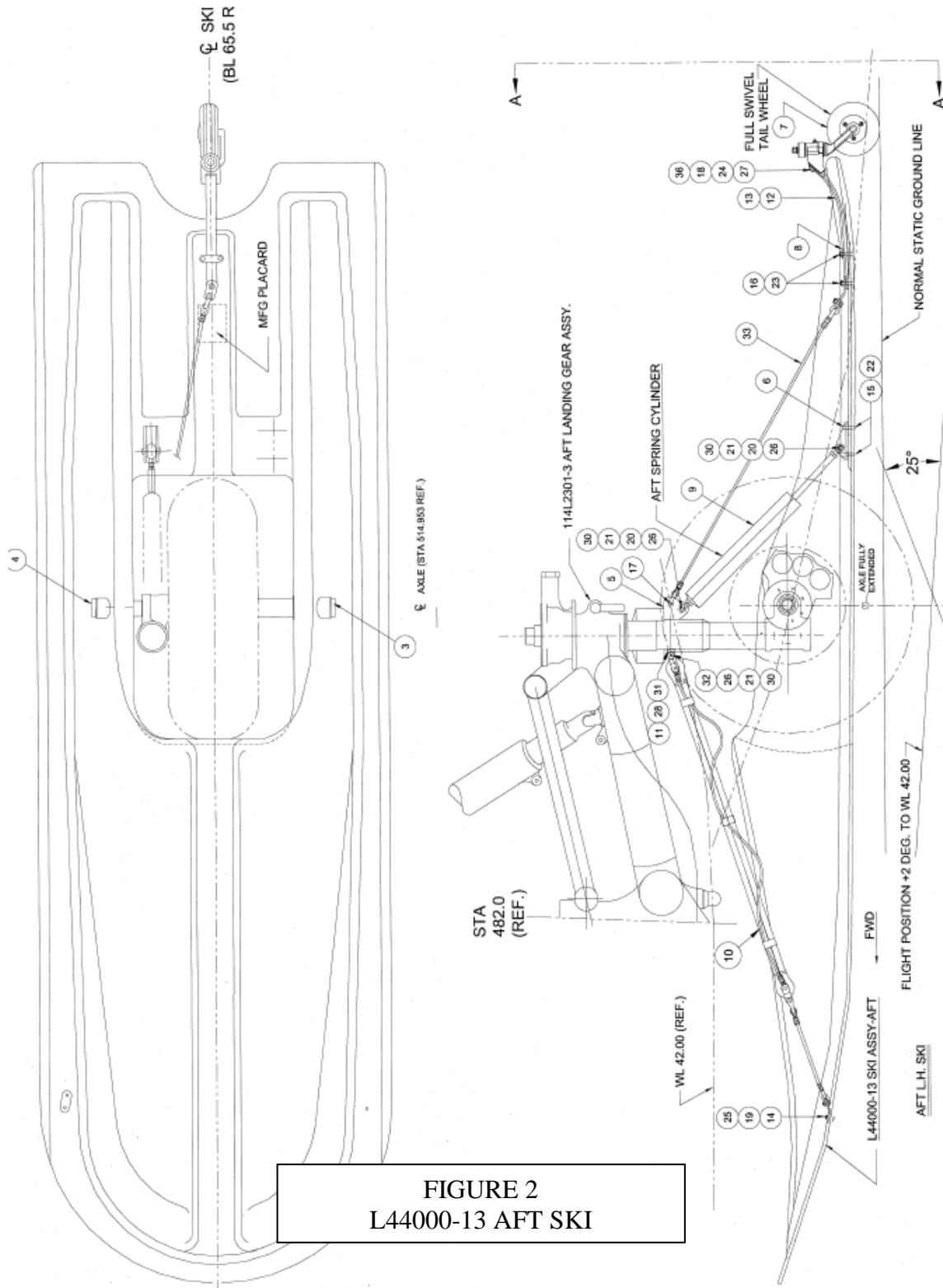


FIGURE 2
L44000-13 AFT SKI

Airglas Model L44000-13 Ski

Fig.No.2

36	1		A512	Spacer for Tailwheel Springs										
35	2		AN365-1032	NUT										
34	2		AN960-10	WASHER										
33	2		L44000-13-7	CHECK CABLE ASSY.										
32	1		AN26-12	CLEVIS BOLT										
31	2		H20-6	NUT										
30	3		AN390-3-2	COTTER PIN										
29	2		AN3-27A	BOLT										
28	1		AN960-616	WASHER										
27	1		AN960-716	WASHER										
26	5		AN960-616L	WASHER										
25	1		AN960-616	WASHER										
24	1		AN365-720	NUT										
23	3		AN363C-616	NUT										
22	2		AN365-428	NUT										
21	3		AN320-6	NUT										
20	2		AN26-21	CLEVIS BOLT										
19	1		AN365-524	BOLT										
18	1		AN7-14A	BOLT										
17	1		AN395-17	CLEVIS PIN										
16	3	17564	EB616-20	BOLT										
15	2		AN4-14A	BOLT										
14	1		AN5-7A	BOLT										
13	1	17564	L20500-D501A-6	LEAF SPRING										
12	1	17564	L20500-D501A-5	LEAF SPRING										
11	1	17564	AN47-SPL	EYE BOLT										
10	1	17564	L44000-13-6	SAFETY CABLE & SHOCK RING ASSY.										
9	1	17564	L44000-19	SPRING CYL.										
8	2	17564	L44000-11-10	TAB										
7	1	17564	L44000D501A	TAILWHEEL ASSY										
6	1	17564	L44000-13-5	LOWER SPRING CYL. MOUNTING BRACKET										
5	1	17564	L44000-13-4	UPPER SPRING CYL. MOUNTING BRACKET										
4	1	17564	L44000-13-3	INBD AXLE ASSY.										
3	1	17564	L44000-13-2	OUTBD AXLE ASSY.										
2	2	17564	L44000-11-4	AXLE BUSHING										
1	1	17564	L44000-4	BASIC MOULDING										
		17564	L44000-13	SKI ASSY	SKI C.G.=3" FWD OF AXLE CL									
NO.	QTY.	CODE IDENT. NO.	PART NO.	DISCRPTION	STOCK SIZE	MATL.	MATL. SPEC.	UTS	FINISH	WT=175LBS		ZONE		
								1000		CALC.	ACT		UNIT	WT

Airglas Model L44000-11 Ski

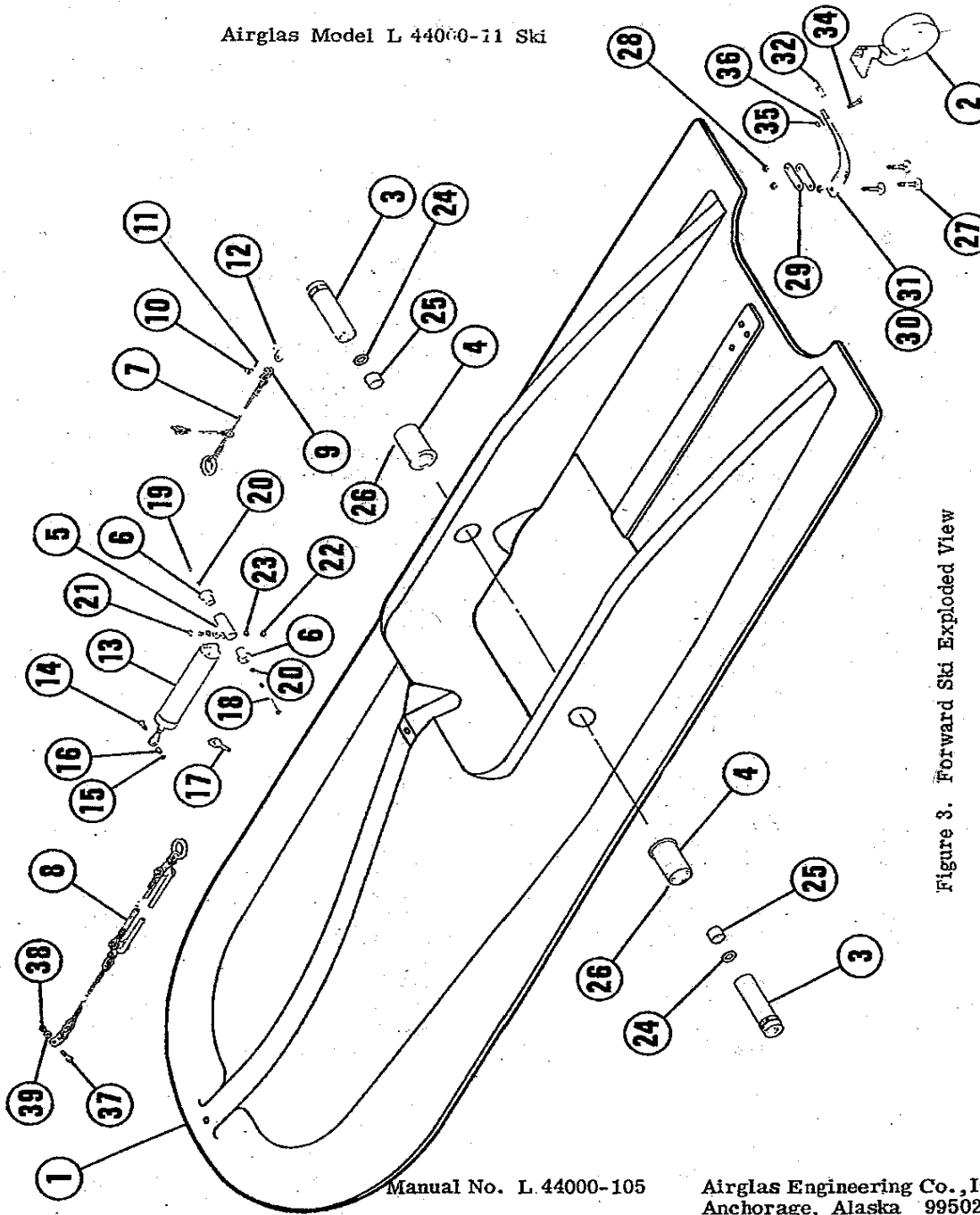


Figure 3. Forward Ski Exploded View

Manual No. L. 44000-105

Airglas Engineering Co., Inc.
Anchorage, Alaska 99502

Airglas Model L44000-11 Ski
Fig.No.3

Index Number	Part Number	Code Indent. No.	Nomenclature	Number Required
1	L44000-2	17564	Basic Fwd. Ski Molding-----	1
2	L44000-D501A (Alt P/N)		Swivel Tail Wheel Assy-----	1
3	L44000-11-3	“	Ski Axle Assy-----	2
4	L44000-11-4	“	Ski Axle Bushing Molded into L44000-2-----	2
5	L44000-11-5	“	Swivel Fitting-----	1
6	L44000-11-6	“	End Fitting-----	2
7	L44000-11-7	“	Check Cable Assy Fwd. Ski-----	1
8	L44000-11-8	“	Safety Cable-----	1
	L44000-11-8HD		Safety Cable—(L44000-11HD SKI) ---	1
9	AN115-46		Shackle-----	1
10	AN395-17		Clevis Pin-----	1
11	AN380-3-2		Cotter Pin-----	1
12	L44000-11-7-1	“	Tab-----	1
13	L44000-17	“	Fwd. Spring Cylinder-----	1
14	AN25-15		Bolt-----	1
15	AN320-5		Nut-----	1
16	L44000-17-10	“	Bushing-----	1
17	AN47-14		Eye Bolt-----	1
18	AN3-44A		Bolt-----	1
19	AN365-1032		Nut-----	1
20	AN960-10		Washer-----	2
21	AN26-23		Clevis Bolt-----	1
22	AN320-6		Nut-----	1
23	AN960-616L		Washer-----	2
24	T-1503	70417	Thrust Washer-----	2
25	L44000-11-3-2	17564	Bearing-----	2
26A	AN3-27A		Bolt-----	2
26B	AN960-10		Washer-----	2
26C	AN365-1032		Nut-----	2
27	EB616-21	“	Bolt-----	3
	EB616-24	“	Bolt---(L44000-11HD SKI)-----	3
28	AN363C-616		Nut-----	3
29	L44000-11-10	“	Tab-----	2
30A	30512-04 or (L20500-D501A-6)	17564	Modified Leaf Spring (L44000-11HD)	1 (Rev B)
30	30512-02 or (L20500-D501A-5)	77294	Leaf Spring-----	1
31	30512-04 or (L20500-D501A-6)	“	Leaf Spring-----	1 (Rev B)
32	A512		Spacer Assy-----	1
33	AN7-13A		Bolt-----	1
34	AN365-720		Nut-----	1
35	AN960-716		Washer-----	1
36	AN5-7A		Bolt-----	1
37	AN365-524		Nut-----	1
38	AN960-516		Washer-----	1

Airglas Model No. L44000-11 Ski

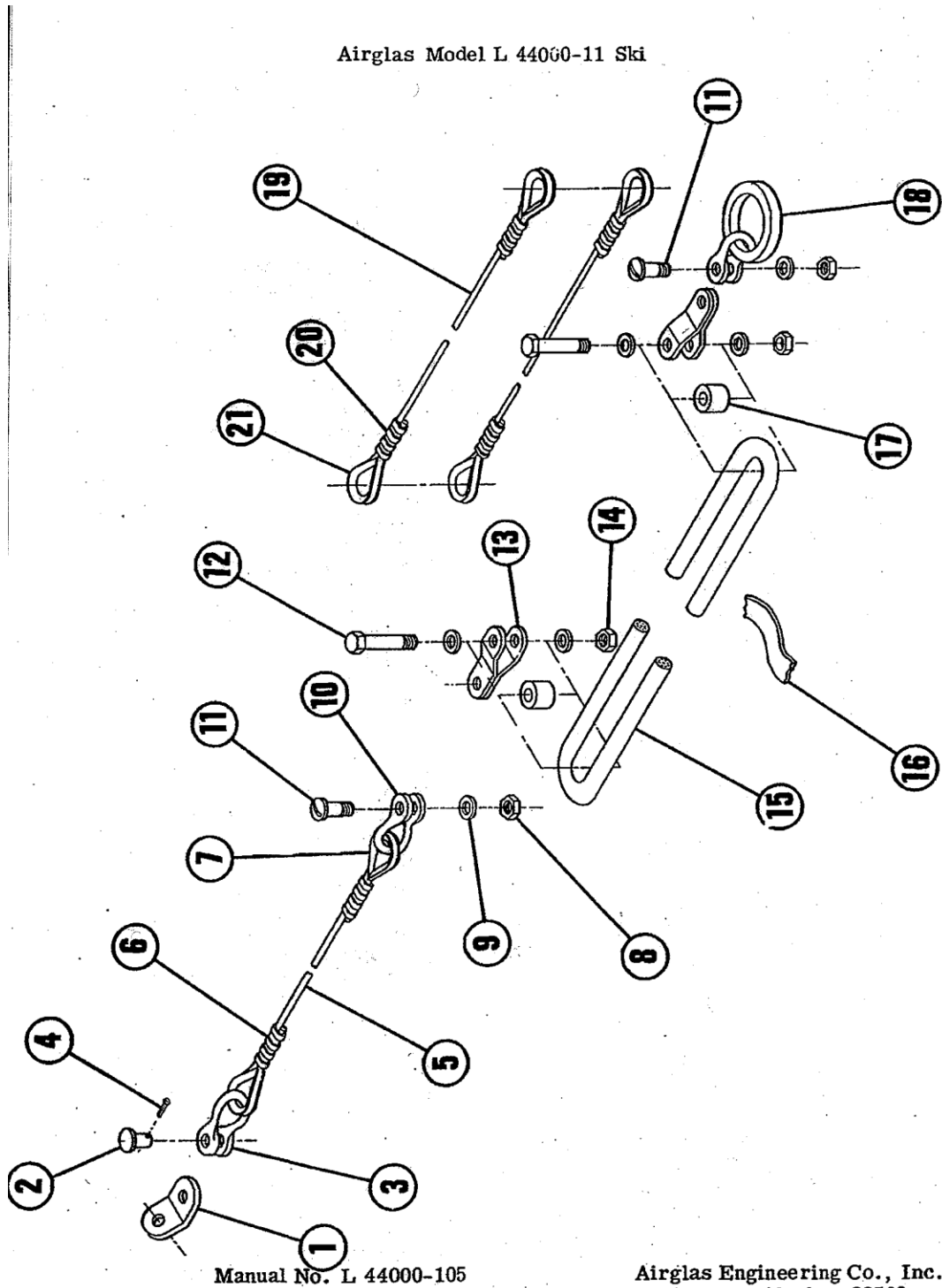


Figure 4 P/N L 44000-11-8 Safety Cable & Shock Ring Assy - Exploded View

Airglas Model L44000-11 Ski

Fig.No.4

Index Number	Part Number	Code Indent.No.	Nomenclature	Number Required
1	L44000-11-8-5	17564	Attach Tab-----	1
2	AN395-17		Clevis Pin-----	1
3	AN115-46		Shackle-----	1
4	AN380-3-2		Cotter Pin-----	3
5	L44000-11-8-2	“	Cable-----	1
6	18-6-X	76691	Nicopress Sleeve-----	2
7	AN100-6		Thimble-----	2
8	AN364-624		Nut-----	2
9	AN960-616L		Washer-----	6
10	AN115-61		Shackle-----	2
11	AN26-15		Clevis Bolt-----	2
12	AN6-16		Bolt-----	2
13	L44000-11-8-6	17564	Attach Tab-----	4
14	AN310-6		Nut-----	2
15	8020CW	52504	Shock Ring-----	1
16			Tape-----	
17	L44000-11-8-1	17564	Tube-----	2
18	L44000-11-8-3	“	Ring-----	1
19	L44000-11-8-4	“	Cable-----	2
20	18-4-P	76691	Nicopress Sleeve-----	4
21	AN100-5		Thimble-----	4

Model L44000-11 Ski

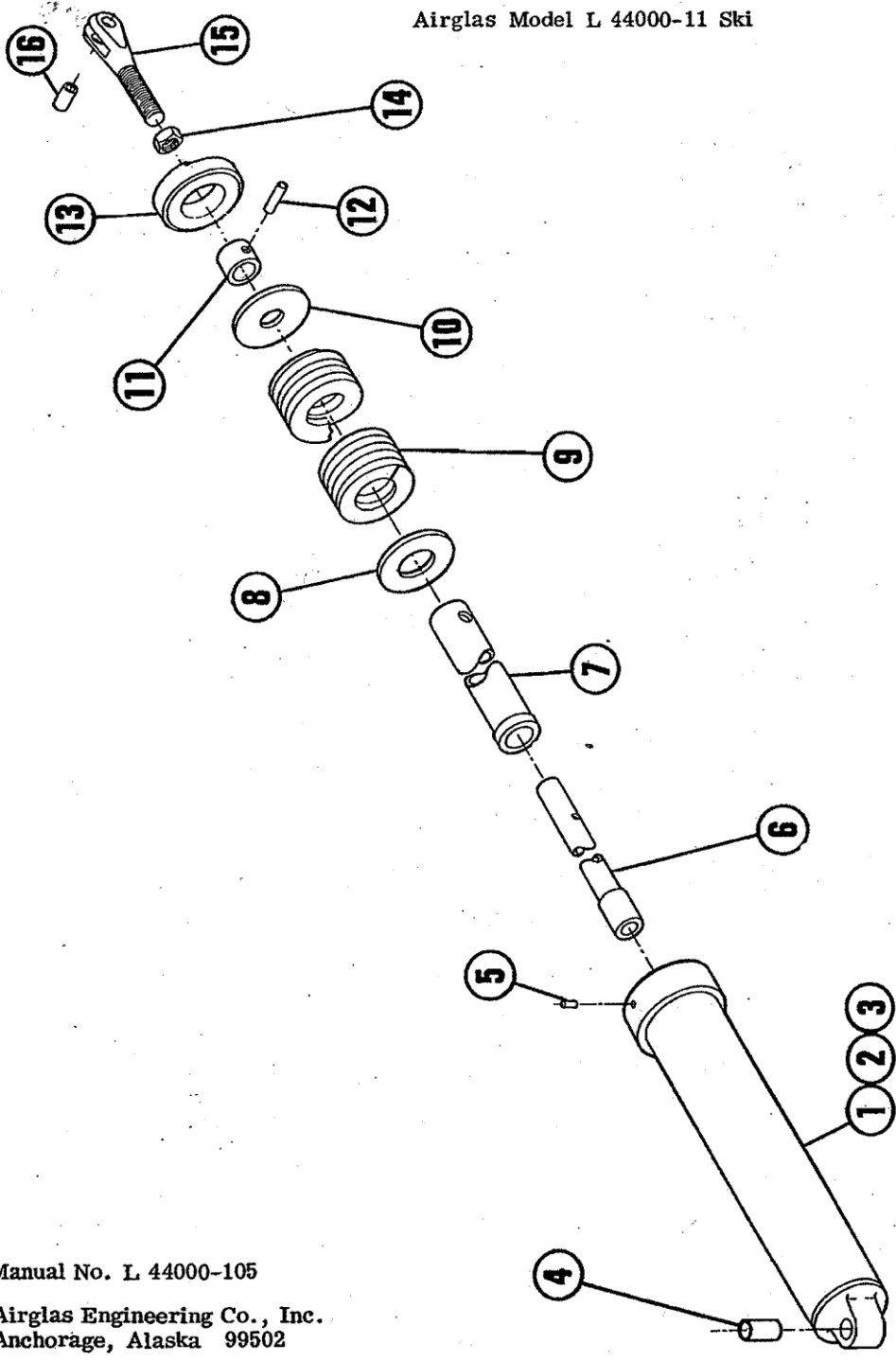


Figure No. 5. P/N L 44000-17 Spring Cylinder Assy. Fwd. - Exploded View

Manual No. L 44000-105

Airglas Engineering Co., Inc.
Anchorage, Alaska 99502

Airglas Model L44000-11 Ski
Fig.No.5

Index Number	Part Number	Code Indent.No.	Nomenclature	Number Required
1	L44000-17-1	17564	Tube-----	1
2	L44000-17-11	“	Fitting-Cylinder End-----	1
3	L44000-17-8	“	Tube-----	1
4	AA-507-3	70417	Bearing-----	1
5	MS171522		Spring Pin-----	1
6	L44000-17-3	17564	Tube-----	1
7	L44000-17-2	“	Tube-----	1
8	L44000-17-4	“	Washer-----	1
9	R-82	06170	Spring-----	1
10	L44000-17-6	17564	Washer-----	1
11	L44000-17-7	“	Tube-----	1
12	MS171652		Spring Pin-----	1
13	L44000-17-9	“	Nut-----	1
14	AN315-7		Nut-----	1
15	L44000-17-12	“	Fork Assembly-----	1
16	L44000-17-10	“	Bushing-----	1

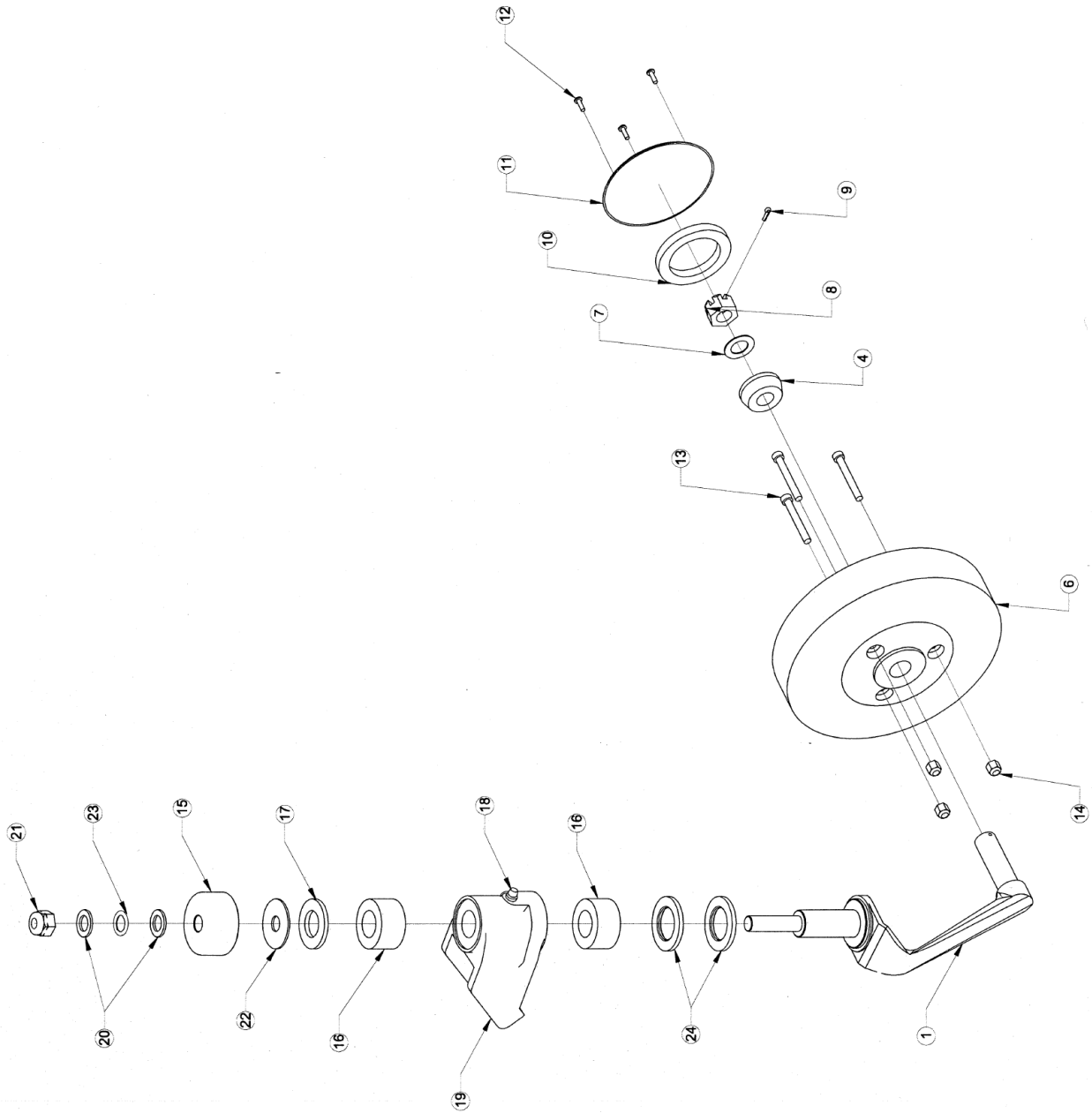


FIGURE 6 P/N L44000-3-24B (Alt. L44000-D501A) SWIVEL TAIL WHEEL EXPLODED VIEW

NOTE: Airglas only uses L44000-D501A Tail Wheels. The Previous P/N L44000-3-24B is obsolete.

FIGURE 6

INDEX NUMBERS

24	2		TT1503	OILLITE THRUST WASHER
23	1		SP3515-22-09	SPRING WASHER, SHAKEPROOF
22	1	17564	AN970-5SPL	WASHER
21	1		AN363-720	NUT
20	2		AN960-716	WASHER
19	1		C-501	BRACKET ASSEMBLY
18	1		A525	FITTING, GREASE
17	1		A515	WASHER
16	2		A554	BEARING, TORRINGTON
15	1		AN503	CAP
14	3		AN365-1032	NUT
13	3		AN502-10-26	BOLT
12	3		A523	SCREW
11	1		A522	CAP HUB
10	1		A524	GREASE RETAINER
9	1		AN380-3-2	COTTER PIN
8	1		AN320-7	NUT
7	1		A531	WASHER
6	1		A590	TIRE
5	1		A544, A545	WHEEL HUB KIT
4	2		A518, A519	BEARING SET
3	1		A546	SPACER
2	1		A547	GARLOCK SEAL
1	1		C503	FORK
NO.	QTY	CODE IDENT NO.	PART NUMBER	DESCRIPTION

NOTE: Airglas only uses L44000-D501A Tail Wheels. The Previous P/N L44000-3-24B is obsolete.

Airglas Model L44000-13 Ski

Airglas Model L 44000-13 Ski

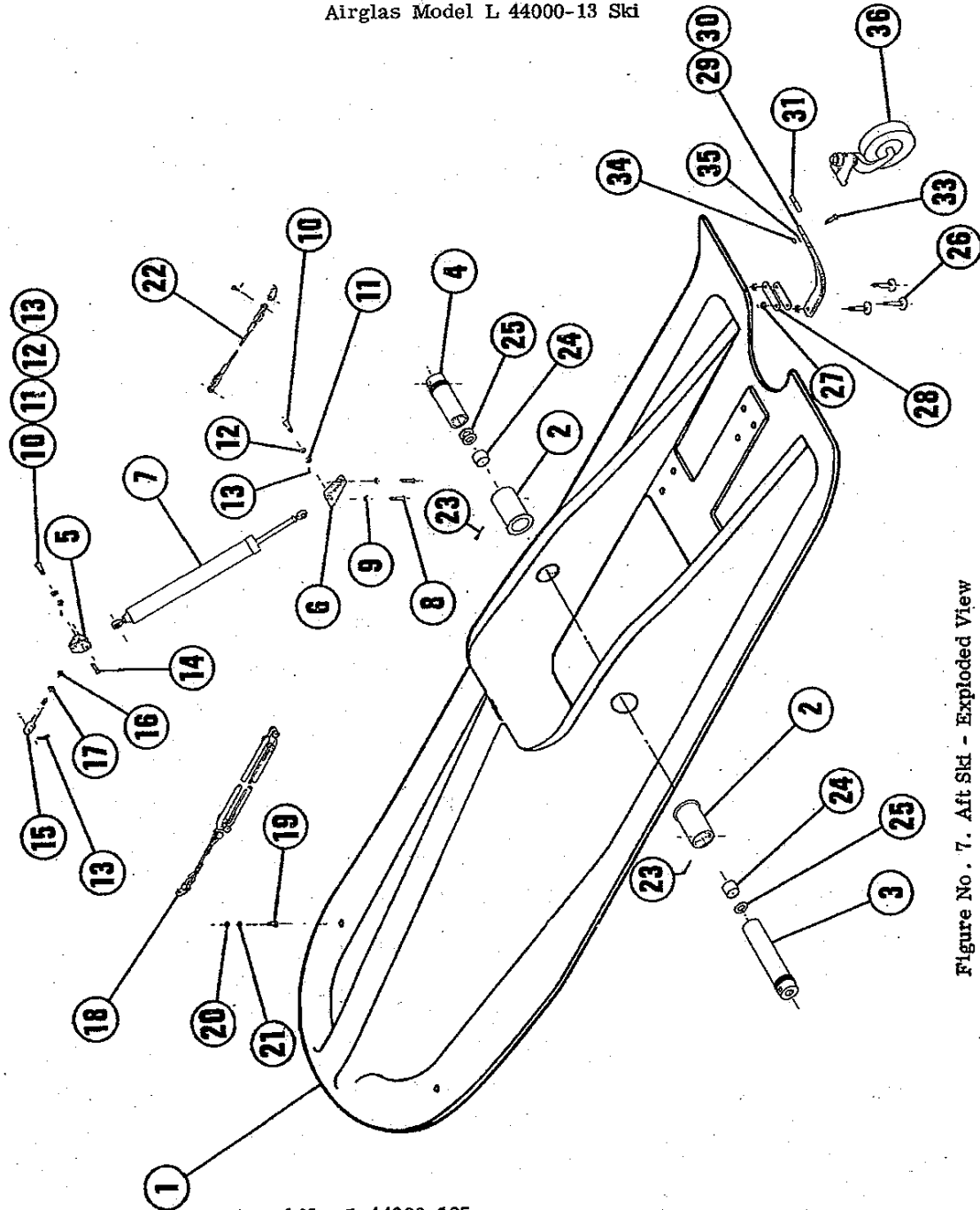


Figure No. 7. Aft Ski - Exploded View

Manual No. L 44000-105

Airglas Engineering Co., Inc.
Anchorage, Alaska 99502

Airglas Model L44000-13 Ski
Fig.No.7

Index Number	Part Number	Code Indent. No.	Nomenclature	Number Required
1	L44000-4	17564	Basic Ski Molding-----	1
2	L44000-11-4	“	Ski Axle Bushing Molded into L44000-4-----	2
3	L44000-13-2	“	Outboard Axle Assy-----	1
4	L44000-13-3	“	Inboard Axle Assy-----	1
5	L44000-13-4	“	Upper Spring Cylinder Mtg. Bracket-----	1
6	L44000-13-5	“	Lower Spring Cylinder Mtg. Bracket-----	1
7	L44000-19	“	Spring Cylinder-----	1
8	AN4-14A		Bolt-----	2
9	AN365-428		Nut-----	2
10	AN26-21		Clevis Bolt-----	2
11	AN320-6		Nut-----	2
12	AN960-616L		Washer-----	2
13	AN380-3-2		Cotter Pin-----	3
14	AN395-17		Clevis Pin-----	1
15	AN47SPL		Eye Bolt-----	1
16	H20-6		Nut-----	1
17	AN960-616		Washer-----	1
18	L44000-13-6	”	Safety Cable and Shock Ring Assembly-----	1
19	AN5-7A		Bolt-----	1
20	AN365-524		Nut-----	1
21	AN960-516		Washer-----	1
22	L44000-13-7	“	Check Cable Assembly-----	1
23A	AN3-27A		Bolt-----	2
23B	AN960-10		Washer-----	2
23C	AN365-1032		Nut-----	2
24	L44000-11-3-2	“	Bearing-----	2
25	T-1503	70417	Thrust Washer-----	3
26	EB616-20	17564	Bolt-----	3
27A	AN363C616		Nut-----	3
28	L44000-11-10	“	Tab-----	2
29	30512-02 or (L20500-D501A-5)	77294	Leaf Spring-----	1
30	30512-04 or (L20500-D501A-6)	“	Leaf Spring-----	1
31	A512		Spacer Assembly-----	1
32	Not Assigned			
33	AN7-15a		Bolt-----	1
34	AN365-720		Nut-----	1
35	AN960-716		Washer-----	1
36	L44000-D501A (Alt)	“	Swivel Tail Wheel Assembly----	1

NOTE: Airglas only uses L44000-D501A Tail Wheels. The Previous P/N L44000-3-24B is obsolete.

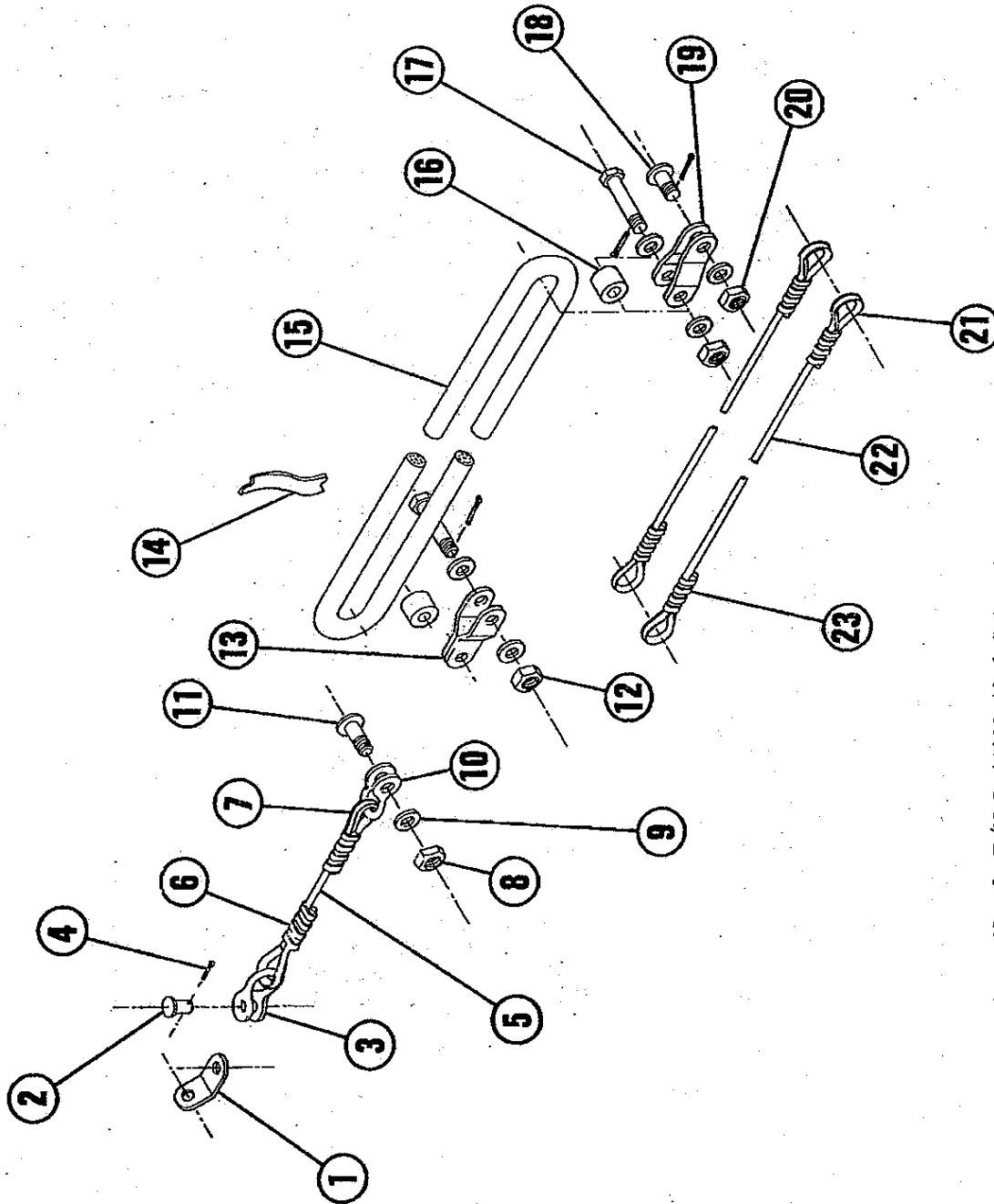


Figure No. 8. P/N L 44000-13-6 Safety Cable & Shock Ring Assy - Exploded View

Manual No. L 44000-105

Airglas Engineering Co., Inc.
Anchorage, Alaska 99502

Airglas Model L44000-13 Ski

Fig.No.8 Index Number	Part Number	Code Indent. No.	Nomenclature	Number Required
1	L44000-11-8-5	17564	Attach Tab-----	1
2	AN395-17		Clevis Pin-----	1
3	AN115-46		Shackle-----	1
4	AN380-3-2		Cotter Pin-----	4
5	L44000-13-6-3	“	Cable-----	1
6	18-6-X	76691	Nicopress-----	2
7	AN100-6		Thimble-----	2
8	AN364-624		Nut-----	1
9	AN960-616L		Washer-----	6
10	AN115-61		Shackle-----	1
11	AN26-15		Clevis Bolt-----	1
12	AN310-6		Nut-----	2
13	L44000-11-8-6	17564	Attach Tab-----	2
14			Tape-----	
15	8020	52504	Shock Ring-----	1
16	L44000-11-8-1	17564	Tube-----	2
17	AN6-16		Bolt-----	2
18	AN26-12		Clevis Bolt-----	1
19	L44000-13-6-2	“	Attach Tab-----	2
20	AN320-6		Nut-----	1
21	AN100-5		Thimble-----	4
22	L44000-13-6-1	“	Cable-----	2

Airglas Model L44000-13 Ski

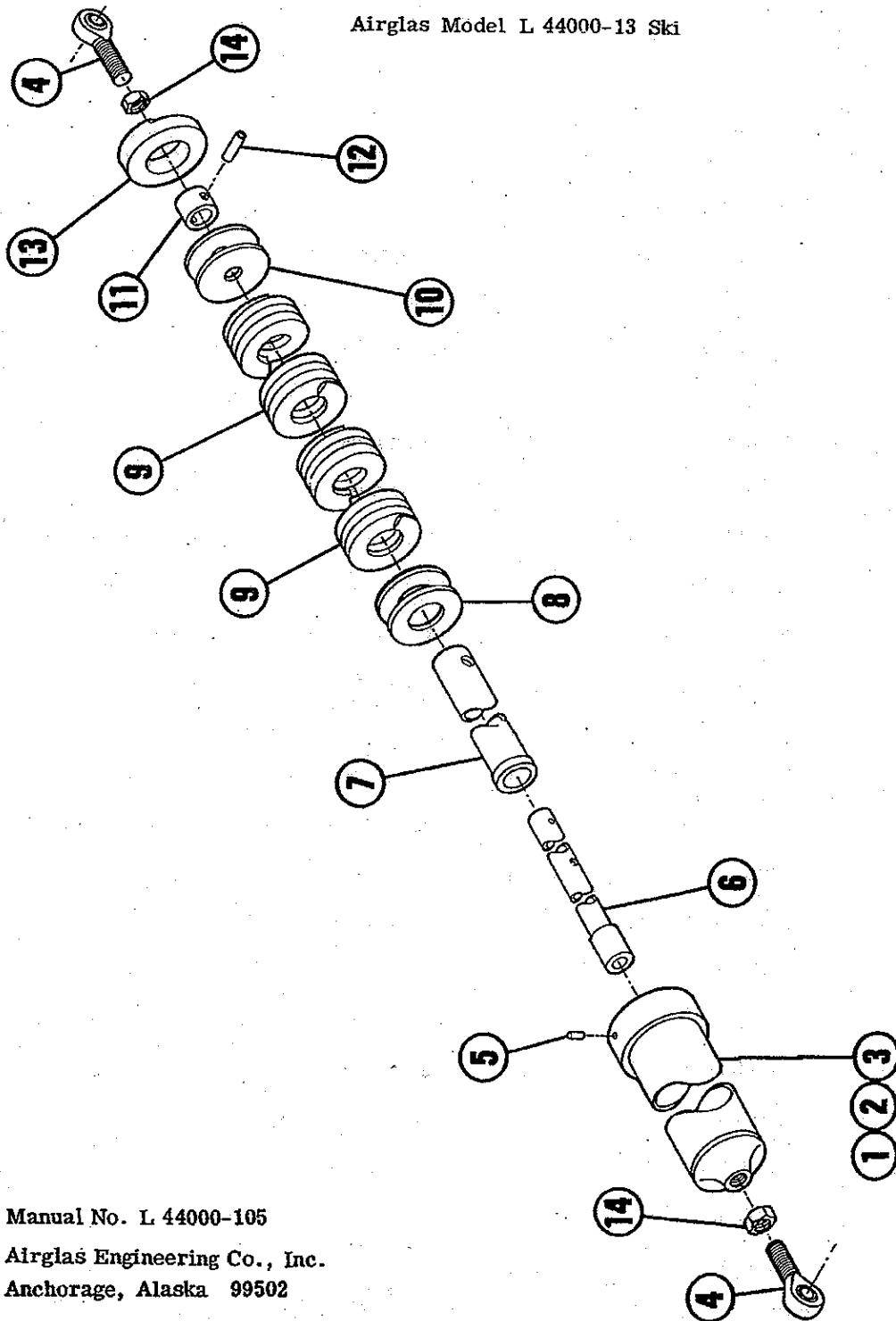


Figure No. 9. P/N L 44000-19 Spring Cylinder Assy. - Exploded View

Manual No. L 44000-105
Airglas Engineering Co., Inc.
Anchorage, Alaska 99502

Manual No. L44000-105 (Rev G) Airglas, Inc.

Airglas Model L44000-13 Ski

Fig.No. 9

Index Number	Part Number	Code Indent.No.	Nomenclature	Number Required
1	L44000-19-1	17564	Tube-----	1
2	L44000-19-4	“	End Fitting-----	1
3	L44000-17-8	“	Tube-----	1
4	HMX-6G	73134	Rod End-----	2
5	MS171522		Spring Pin-----	1
6	L44000-19-3		Tube-----	1
7	L44000-19-2	“	Tube-----	1
8	L44000-17-4	“	Washer-----	2
9	2X8XHD		Spring G/N 3 DWG L44000-19-----	2
10	L44000-17-6	“	Washer-----	2
11	L44000-17-7	“	Tube-----	1
12	MS171652		Spring Pin-----	1
13	L44000-17-9	“	Nut-----	1
14	AN316-7		Nut-----	2

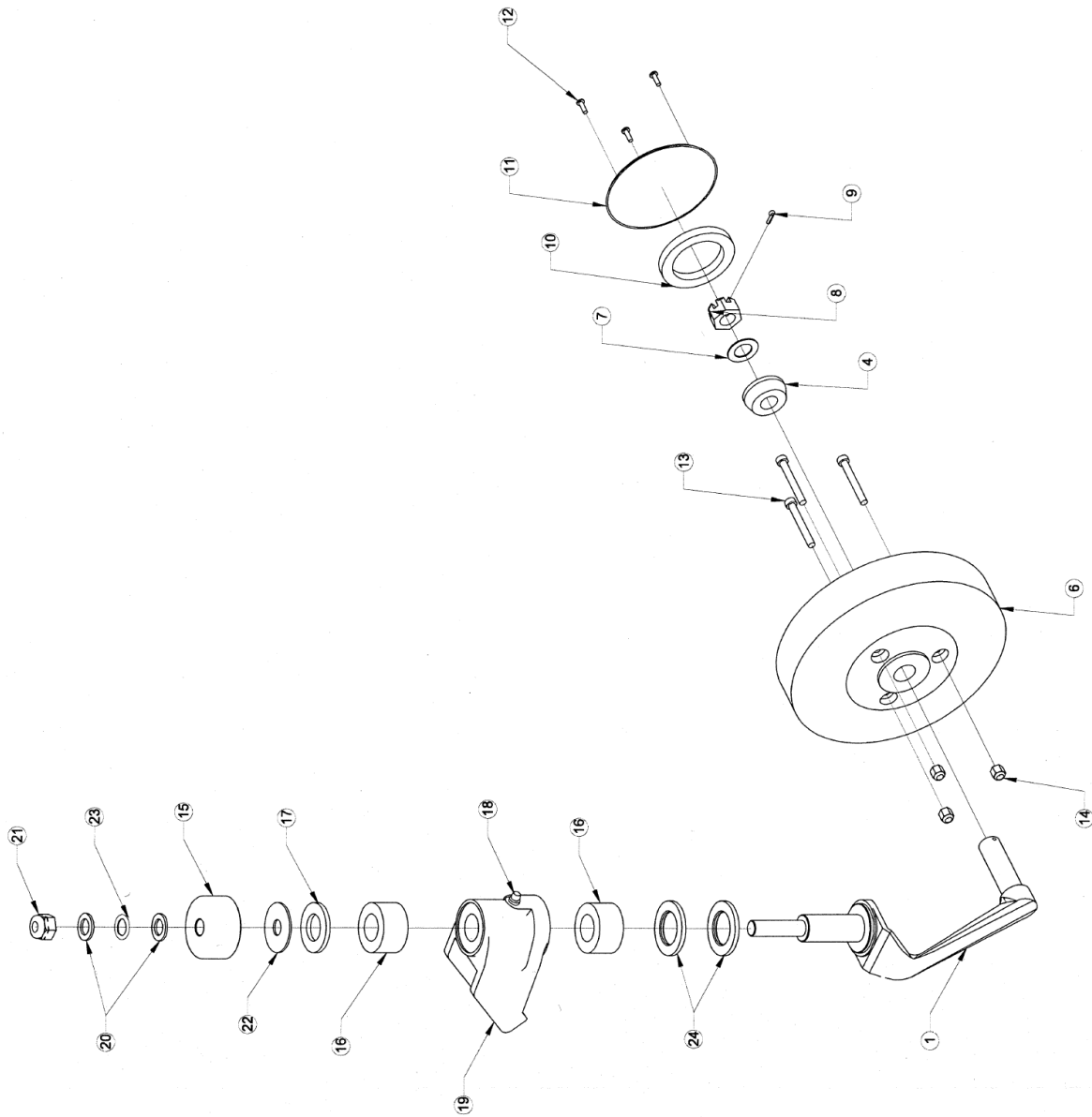


FIGURE 10 P/N L44000-3-24B (Alt. L44000-D501A) SWIVEL TAIL WHEEL EXPLODED VIEW

NOTE: Airglas currently only uses L44000-D501A Tail Wheels. L44000-3-24B is obsolete.

FIGURE 10

INDEX NUMBERS

24	2		TT1503	OILLITE THRUST WASHER
23	1		SP3515-22-09	SPRING WASHER, SHAKEPROOF
22	1	17564	AN970-5SPL	WASHER
21	1		AN363-720	NUT
20	2		AN960-716	WASHER
19	1		C-501	BRACKET ASSEMBLY
18	1		A525	FITTING, GREASE
17	1		A515	WASHER
16	2		A554	BEARING, TORRINGTON
15	1		AN503	CAP
14	3		AN365-1032	NUT
13	3		AN502-10-26	BOLT
12	3		A523	SCREW
11	1		A522	CAP HUB
10	1		A524	GREASE RETAINER
9	1		AN380-3-2	COTTER PIN
8	1		AN320-7	NUT
7	1		A531	WASHER
6	1		A590	TIRE
5	1		A544, A545	WHEEL HUB KIT
4	2		A518, A519	BEARING SET
3	1		A546	SPACER
2	1		A547	GARLOCK SEAL
1	1		C503	FORK
NO.	QTY	CODE IDENT NO.	PART NUMBER	DESCRIPTION

NOTE: Airglas currently only uses L44000-D501A Tail Wheels. L44000-3-24B is obsolete.

Manual No. L44000-105 (Rev G) Airglas, Inc.

Page 27

REPAIR APPENDIX
(See repair appendix in separate document)