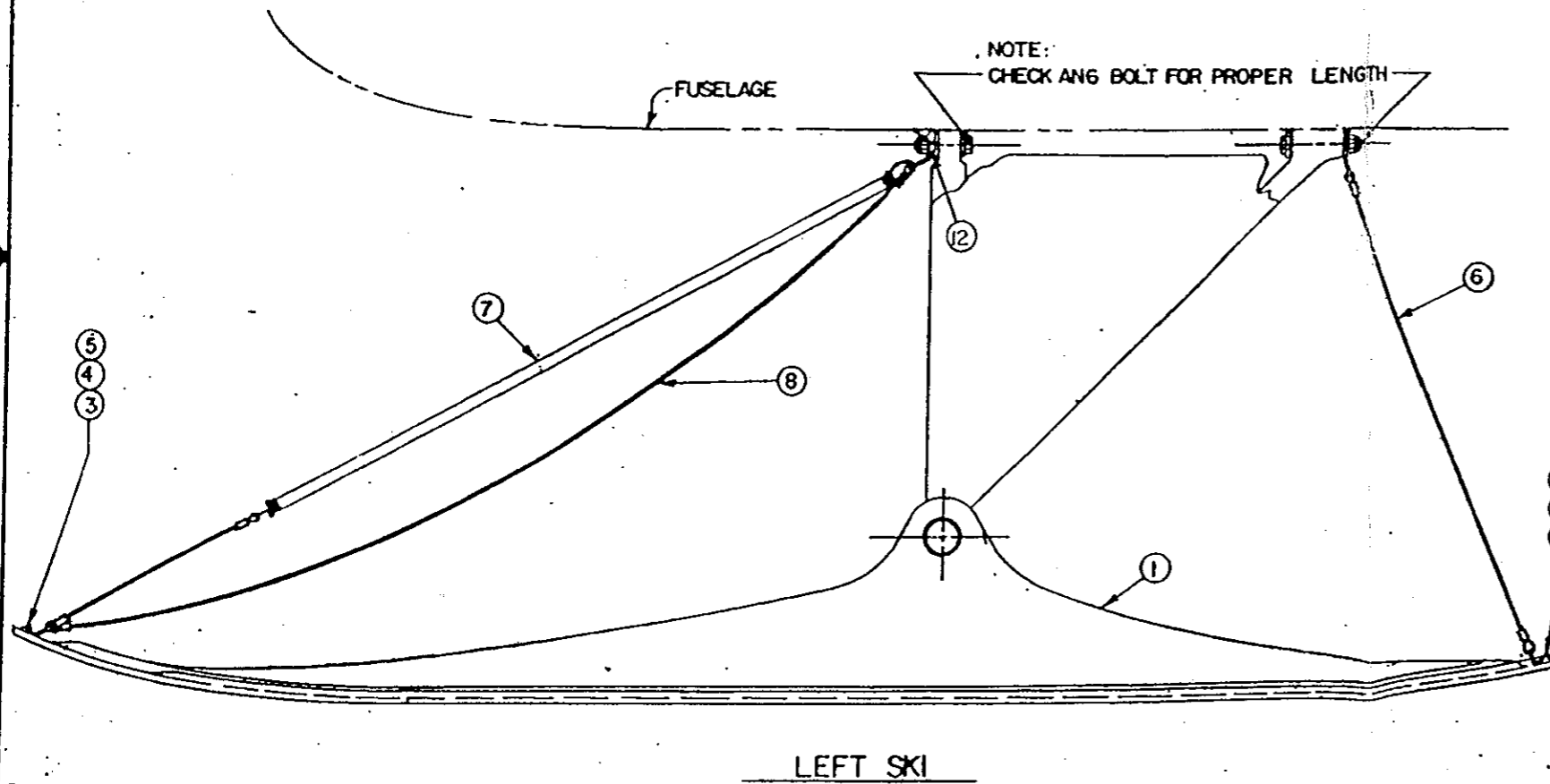


REV.	DESCRIPTION	DATE	BY
1			

- NOTE:
1. IN SOME INSTALLATIONS THE WELD ON THE INNER BEARING STOP MAY HAVE TO BE FILLED FOR CLEARANCE.
  2. UNIVERSAL CABLE ASSY. 105-2 MAY BE USED IN PLACE OF PARTS L2500-PA-18-1, & -2. THIS ASSY. USES SHOCK RING 8020.

THIS DOCUMENT OR DRAWING INCLUDES INFORMATION PROPRIETARY TO AIRGLAS, INC. AND IS SUBMITTED FOR EVALUATION ONLY AND SHALL NOT BE USED TO MANUFACTURE OR REPRODUCE WITHOUT PERMISSION OF AIRGLAS, INC.



14	2	L2000-PA-18-4	SPACER							
13	2	AN960-1616SFL	WASHER							
12	2	-4	SPACER	625, O.D. X.385 I.D. X.375	4130 STL					
11	2	H-241 SPL	BRZ BEARING							
10	2	H-235 SPL	BRZ BEARING							
9	2	L2000-PA-18-5	SPACER							
8	2	-3	SAFETY CABLE ASSY	57 3/4 THIMBLE TO THIMBLE						
7	2	-2	BUNGEE ASSY	34 SPRING END TO SPRING END						
6	2	-1	CHECK CABLE ASSY	34 3/4 THIMBLE TO THIMBLE						
5	8	AN960-416	WASHER							
4	8	AN365-428	NUT							
3	8	AN4-7A	BOLT							
2	1	L2500A-2	RIGHT SKI	NOT SHOWN						
1	1	L2500A-1	LEFT SKI							
X	1	L2500-PA-18	SKI KIT	WT. 66 LBS. CB 6" AHEAD OF MAIN GEAR AXLE						
NO.	QTY.	PART NO.	DESCRIPTION	STOCK SIZE	MAT'L	MAT'L SPEC.	UTS	FINISH	ANALYST	DATE

**ONE-HALF SCALE  
COPY OF ORIGINAL DWG.**

NOTE:  
USE ON MODELS WITH 125 H.P. OR GREATER ENGINES.  
INSTALLED PER STC SA215AL

THE DESIGN INFORMATION CONTAINED HEREIN IS THE PROPERTY OF AIRGLAS ENGINEERING CO., INC. AND SHALL NOT BE USED TO MANUFACTURE OR REPRODUCE WITHOUT PERMISSION OF AIRGLAS ENGINEERING CO., INC.

CONTRACT NO.	AIRGLAS ENGINEERING CO., INC. ANCHORAGE, ALASKA
DR 75	SKI INSTALLATION L2500 FOR PA-18
DATE 1/2/68	SCALE 1/4
STRUCT	SIZE D
WTS	CODE IDENT. NO. 17564
	L2500-PA-18
	SHEET 1 OF 1