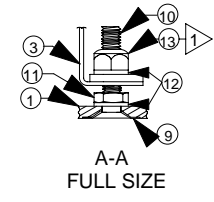
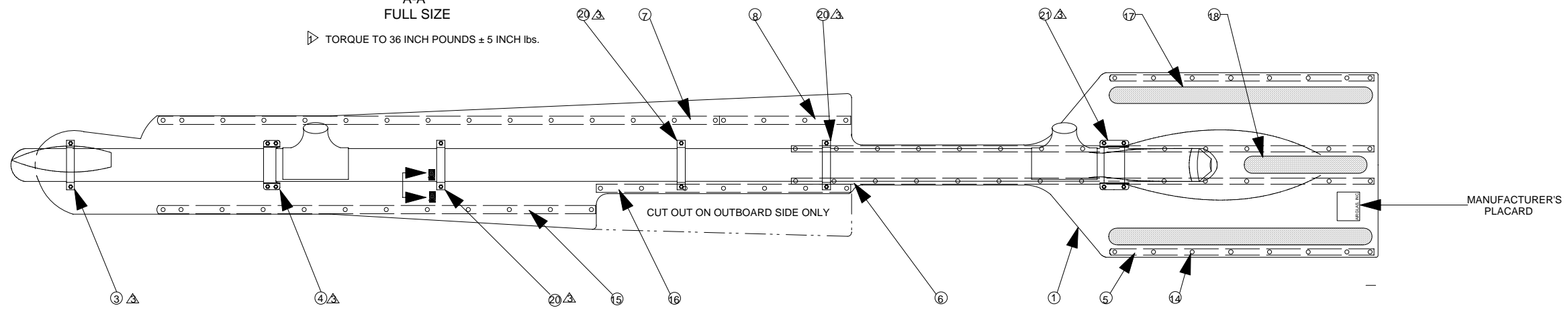


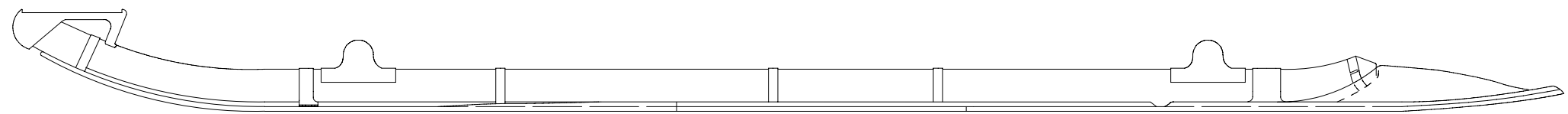
ZONE	LTR	DESCRIPTION	DATE	APPROVED
	A	ADD L8500R-3, -4, -5, -6 ADD L8500A-9-1, -2, -3 DELETE L8500A-3, -4	7-19-94	GL
ALL	B	CORRECTIONS	12-23-98	GL
	C	COMBINED R. RS & RR KITS	23 APR 08	CED



TORQUE TO 36 INCH POUNDS ± 5 INCH lbs.



LEFT HAND SKI SHOWN, RIGHT HAND SKI HAS CUT-OUT ON OPPOSITE SIDE



LEFT HAND SKI ATTACHED TO SKID TUBE

- NOTES : 1. IT IS REQUIRED THAT THE SHOE ASSEMBLY BE REMOVED AND THE HOLES PLUGGED WITH AN525-10R7 WASHER HEAD SCREWS, WET INSTALL WITH SEALANT BEFORE INSTALLATION OF SKI.
2. THE L8500RR SKI KIT IS TO BE INSTALLED ONLY ON BELL 412 HELICOPTERS WITH A LANDING GEAR PART NUMBER 412-050-033-101.
- ⚠ THE L8500R-3, -4, -5, -6 STRAPS ARE FOR THE L8500RR KIT ONLY. THE L8500A-3, -4 STRAPS ARE FOR THE L8500R/RS KITS ONLY.

PER S.T.C. SH1919NM - 412, 412EP, 412CF

21	2	17564	L8500R-6	STRAP																
20	6	17564	L8500R-5	STRAP																
19	x	x	x	x	x															
18	2	17564	L8500A-9-4	NON-SKID	2 X 14															
17	4	17564	L8500A-9-1	NON-SKID	2 X 32															
16	2	17564	L8500A-8-1	RUNNER																
15	2	17564	L8500A-7-1	RUNNER																
14	160R, 156RR/RS		SSB6-8	RIVET																
13	32	17564	MS21042-5	NUT																
12	64	17564	AN960-516	WASHER																
11	32	17564	AN316-524-5R	NUT, SHEAR																
10	32	17564	NASS14P524-24P	SCREW																
9	32	17564	30185	WASHER																
8	2	17564	L8500A-8	RUNNER																
7	2	17564	L8500A-7	RUNNER																
6	4	17564	L8500A-6	RUNNER																
5	4	17564	L8500A-5	RUNNER																
4	2	17564	L8500A-4	STRAP																
3	2	17564	L8500A-3	STRAP																
2	1	17564	L8500R-2	RH SKI RR/RS KIT																
1	1	17564	L8500R-1	LH SKI (L8500A-1 R KIT C.G. 47.25" FWD OF SOCKET FACE @ 72 lbs.)																
⊗	1	17564	L8500RR/RS	SKI KIT (BOTH)	C.G. 45.25" FORWARD OF SOCKET FACE @ 140 lbs.															

NO.	QTY	CODE IDENT. NO.	PART NUMBER	DESCRIPTION	STOCK SIZE	MATERIAL	MATERIAL SPEC.	UTS/1000	FINISH	CALC. UNIT	ACT. WT	ZONE
LIST OF MATERIALS												
UNLESS OTHERWISE SPECIFIED DIMENSIONS ARE IN INCHES												
L8500R				BELL 412				CONTRACT NO.		Airglas, Inc.		
L8500RR				BELL 412CF				SPEC. CONTROL NO.		Anchorage, Alaska		
L8500RS				BELL 412EP				Approved by: WKL		BELL 412, 412CF, 412EP		
NEXT ASSY: USED ON				MATERIAL				Checked by: WKL		with RESCUE HOIST		
APPLICATION				HEAT TREAT				Drawn by: Gary Landes		INSTALLATION		
				STEEL				Date: 9-13-93		REV		
				ALLM.				Scale: 1:5		C		
				MAG. CAST				Sheet: 1 OF 1				