

8

7

6

5

4

3

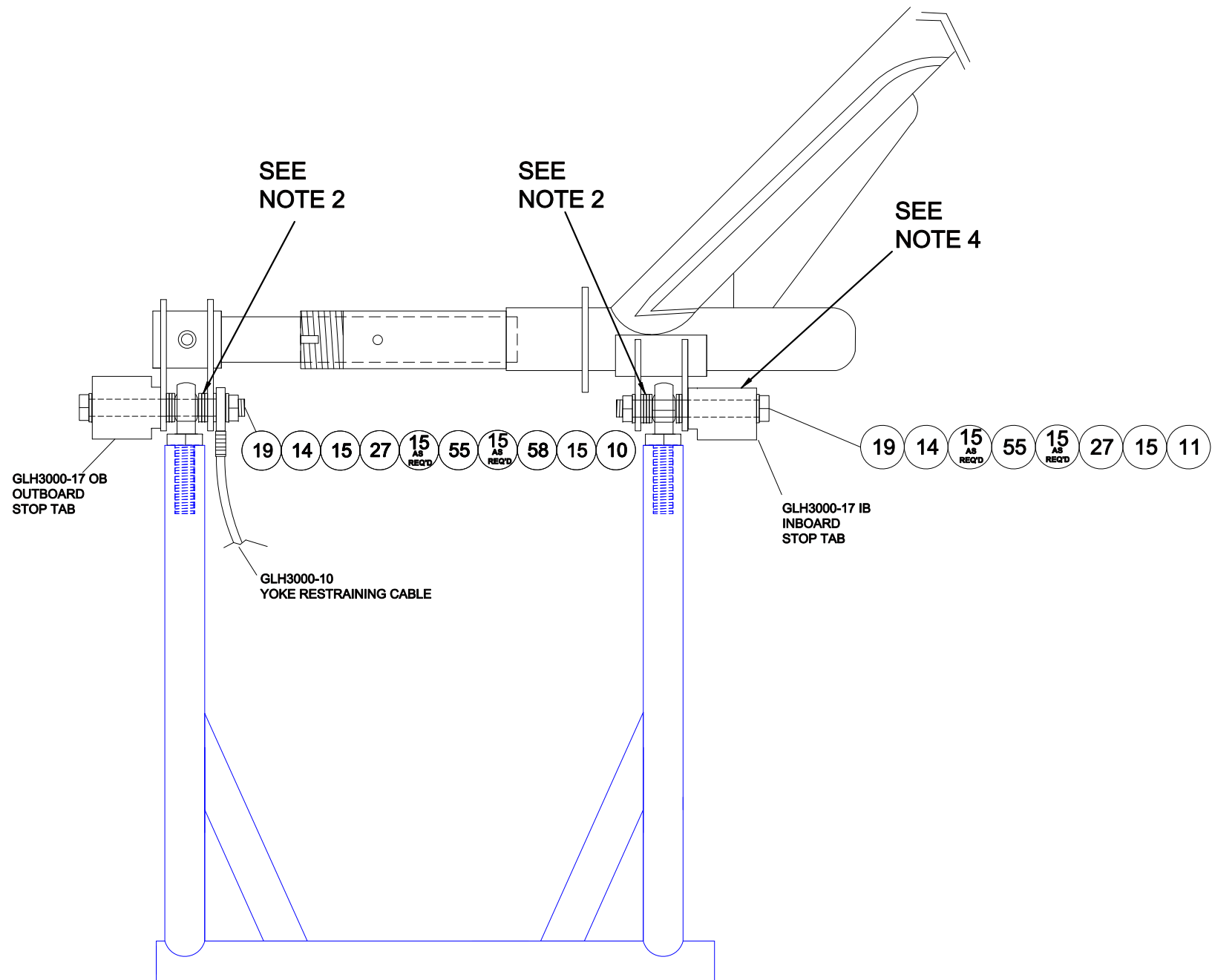
2

1

REVISIONS		DATE	APRVD BY
A	Minor Hardware Changes/ Sheet 3 added	11 Jan 10	CED
B	Cylinder / Hardware Changes	1 Mar 11	CED
C	Changed GLH3000-17 design & hardware	9 Nov 11	CED
D	GLH3000-17 IB & OB DESIGNATED, ADDED NOTE 4, REVERSED DEPICTION OF OB ATTACH BOLT.	23 Mar 15	CDB

NOTES

1. INSTALL HARDWARE AS DEPICTED. USE AN960-616 WASHERS TO SPACE THE YOKE BETWEEN GEAR MOD LUGS. FAILURE TO INCLUDE WASHER BETWEEN YOKE AND LUGS MAY CAUSE CONTACT OF TIRE ON SKI.
2. ALIGNMENT OF WHEEL INSIDE WHEEL WELL AREA CAN BE MADE BY ADJUSTMENT OF WASHER STACK (ITEM #15). CENTER WHEEL IN WHEEL WELL.
3. YOKE ROD ENDS CAN BE TURNED IN OR OUT TO ADJUST ALIGNMENT OF SKI. SKI SHOULD ALIGN WITH WHEELS WHEN COMPLETE.
4. FLAT ON INBOARD STOP TAB (GLH3000-17IB), ALLOWS FOR CLEARANCE WITH 1.5" AXLES . ROUND PORTION OF STOPS SHOULD MAKE CONTACT WITH SKI.



DETAIL "F"

THIS DRAWING INCLUDES INFORMATION PROPRIETARY TO AIRGLAS, INC. AND IS SUBMITTED FOR EVALUATION ONLY AND SHALL NOT BE USED TO MANUFACTURE OR REPRODUCE WITHOUT PERMISSION OF AIRGLAS, INC.

UNLESS OTHERWISE SPECIFIED DIMENSIONS ARE IN INCHES		CONTRACT NO.	Airglas, Inc. Anchorage, Alaska	
CC-18	DECIMALS X ± .1	SPEC. CONTROL NO.	GLH3000 SKI INSTALLATION	
S-18-180	ANGLES X' ± 2"	Approved by: WKL	PIPER PA-18	
PA-12	HEAT TREAT	Checked by: CED	Size	Code Ident.No.
PA-18	GOV. SPEC.	Drawn by: JDH	B	17564
NEXT ASSY.	MATERIAL	Date: 31 Aug 2009	GLH3000-1-PA18	REV
USED ON	STEEL MIL - H - 6875			D
APPLICATION	ALUM. MIL - H - 6088		Sheet 3 OF 3	
	MAG. CAST MIL - H - 6867			

8

7

6

5

4

3

2

1