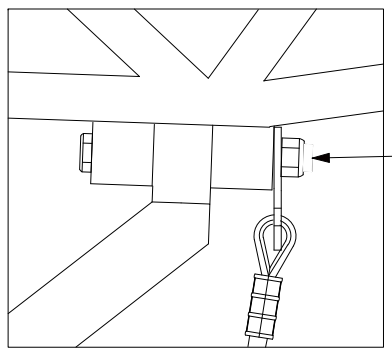
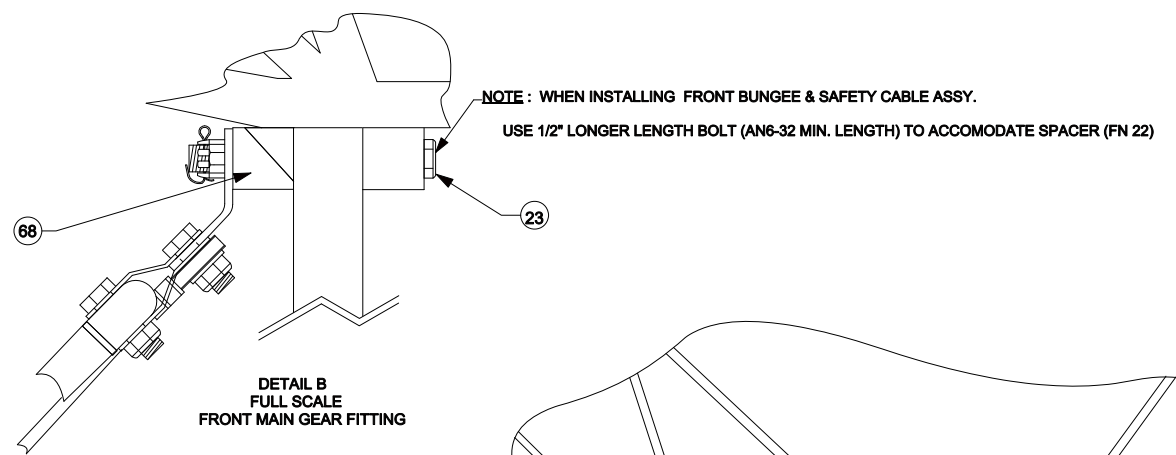
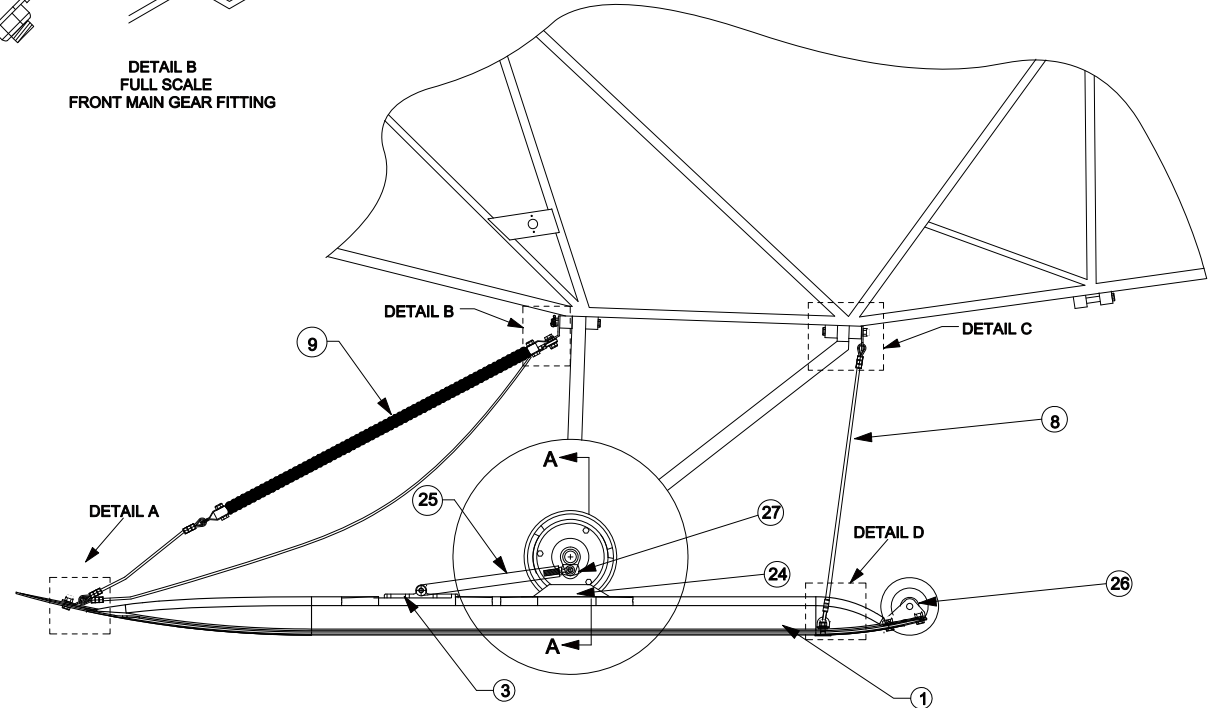


REVISIONS				
ZONE	REV	DESCRIPTION	DATE	APRVD BY
	A	Minor Hardware Changes/ Sheet 3 added	11 Jan 10	CED
	B	Cylinder/Hardware Changes	1 Mar 11	CED
	C	Changed GLH3000-17 design & hardware	9 Nov 11	CED

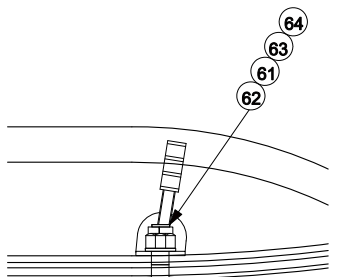
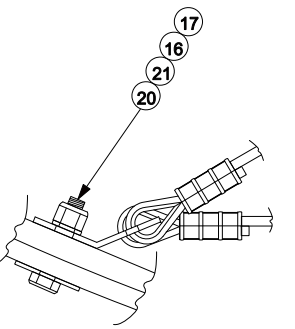
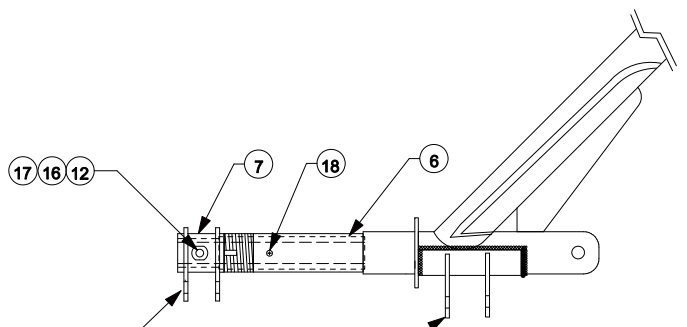
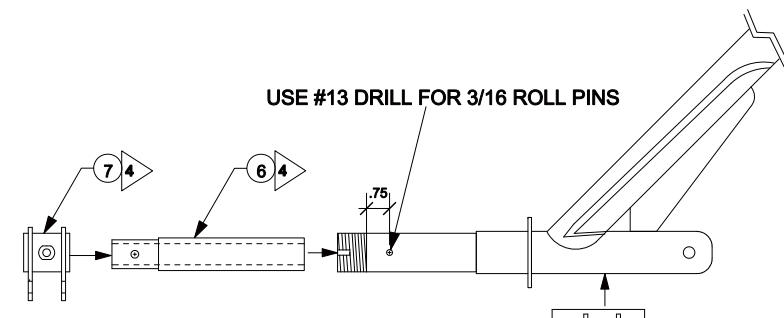


EXISTING BOLT
USE LONGER BOLT AS REQUIRED TO GET PROPER BOLT GRIP.

- NOTES**
1. INSTALL PER AIRGLAS INSTALLATION INSTRUCTIONS (MANUAL GLH3000-105)
 2. LEFT SKI IS SHOWN , RIGHT SKI IS OPPOSITE
 3. QTY'S SHOWN ARE FOR BOTH SKIS
 4. ITEMS 5, 6 & 7 ARE MANUFACTURED AND WELDED AT AIRGLAS FACTORY ONLY



NO.	QTY	CODE IDENT. NO.	PART NUMBER	DESCRIPTION	STOCK SIZE	MATERIAL	MATERIAL SPEC.	UTS 1000	FINISH	CALC. UNIT	ACT. WT	ZONE		
27	4	17564	GLH3000-17	YOKE STOP TAB										
26	2	17564	LW2500-18	TAIL WHEEL ASSY.										
25	2	17564	GLH3000-5	YOKE ASSY.										
24	4	17564	LH3800-01-4	YOKE PAD										
23	2		AN6-32	BOLT										
22	2	17564	PA32-206L-5	SPACER										
21	4		MOD. 7/16 ID 2931	SS FENDER WASHER										
20	4		AN4-11A	BOLT										
19	6		AN380-3-2	COTTER PIN										
18	2		MS171596 for 1.25" / MS171598 for 1.5"	ROLL PIN										
17	10		AN365-428	NUT										
16	10		AN960-416	WASHER										
15	6		AN960-616	WASHER										
14	6		AN310-6	NUT										
12	2		AN4-14A	BOLT										
11	2		AN6-32	BOLT										
10	2		AN6-34	BOLT										
9	2	17564	GLH3000-PA18-14	RIGGING, BUNGEE & SAFETY CABLE ASSY.										
8	2	17564	GLH3000-PA18-13	RIGGING, CHECK CABLE ASSY.										
7	2	17564	LW2500-PA-18-7	OUTBD ATTCH BRACKET.										
6	2	17564	LW2500-PA-18-6	STUB AXLE										
5	1	17564	LW2500-PA18-5	INBD ATTCH BKT, L.H.										
4	1	17564	LW2500-PA18-4	INBD ATTCH BKT, R.H. (NOT SHOWN)										
3	4	17564	LW2500-3	SKI ATTACH FITTING										
2	1	17564	GLH3000-2	RIGHT SKI (Not shown)										
1	1	17564	GLH3000-1	LEFT SKI										
1	1	17564	GLH3000-PA18	SKI KIT	C.G. IS 8" FORWARD OF C.L. OF MAIN GEAR AXLE, INSTALLED KIT WT IS 90 lbs.									



UNLESS OTHERWISE SPECIFIED DIMENSIONS ARE IN INCHES

CONTRACT NO. _____
SPEC. CONTROL NO. _____

DECIMALS $\times \pm .1$ ANGLES $\times \pm 2'$
 $\times \pm .08$ $\times \pm 2'$
 $\times \pm .010$ $\times \pm 2'$

HEAT TREAT GOV. SPEC. Approved by: **WKL**
 MATERIAL STEEL MIL - H - 6875 Checked by: **CED**
 ALUM. MIL - H - 9088
 MAG. CAST MIL - H - 6867 Drawn by: **JDH**

GLH3000 SKI INSTALLATION PIPER PA-18

PA-18 APPLICATION Date: 31 Aug 2009

Size Code Ident.No. REV
 B 17564 GLH3000-1-PA18 C
 Scale 1:5 Sheet 1 OF 3