

Supplemental Type Certificate

Number SA 266AL

This certificate, issued to Airglas Engineering Co., Inc.
P. O. Box 6107
Anchorage, Alaska 99502

certifies that the change in the type design for the following product with the limitations and conditions therefor as specified hereon meets the airworthiness requirements of Part 4a of the Civil Air Regulations, effective October 11, 1950

Original Product— Type Certificate Number: 759
Make: Champion
Model: 7GCBC

Description of Type Design Change: Installation of Airglas Engineering Model L2500 wheel replacement skis per revision "A" of Airglas Drawing L2500-7SG dated June 7, 1968.

Limitations and Conditions: This installation is limited to those aircraft fitted with spring steel main gear.

This certificate and the supporting data which is the basis for approval shall remain in effect until surrendered, suspended, revoked, or other termination date is otherwise established by the Administrator of the Federal Aviation Agency.

Date of application: January 13, 1968

Date reissued:

Date of issuance: February 13, 1968

Date amended: June 21, 1968



By direction of the Administrator

Robert W. Stephens

(Signature)
Robert W. Stephens, Chief
Engineering & Manufacturing Branch
Alaskan Region

(Title)

Any alteration of this certificate is punishable by a fine of not exceeding \$1,000, or imprisonment not exceeding 3 years, or both.

This certificate may be transferred in accordance with FAR 21.47.

SUPPLEMENT TO FAA APPROVED
AIRPLANE FLIGHT MANUAL

FAA Identification

Champion - 7GCBC

Serial No. _____

This Supplement must be attached to FAA Approved Flight Manual when Landes-Airglas Model L-2500A skis are installed.

PERFORMANCE INFORMATION SECTION.

Take-off: Under the most favorable conditions of smooth packed snow at temperatures approximating 70°F. the ski-plane take-off distance is approximately 10 percent greater than that shown for the landplane.

Landing: Under the most favorable conditions of smooth packed snow at temperatures approximating 32°F. the ski-plane landing distance is approximately 20 percent greater than that shown for the landplane.

NOTE: In estimating distances for other conditions, caution should be exercised in that other temperatures or other snow conditions may either decrease or increase these distances.

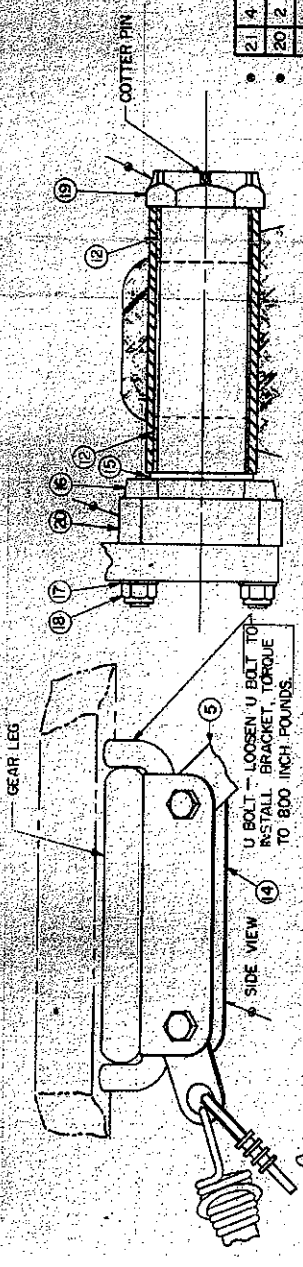
Date: February 13, 1968

FAA APPROVED

Robert W. Stephens

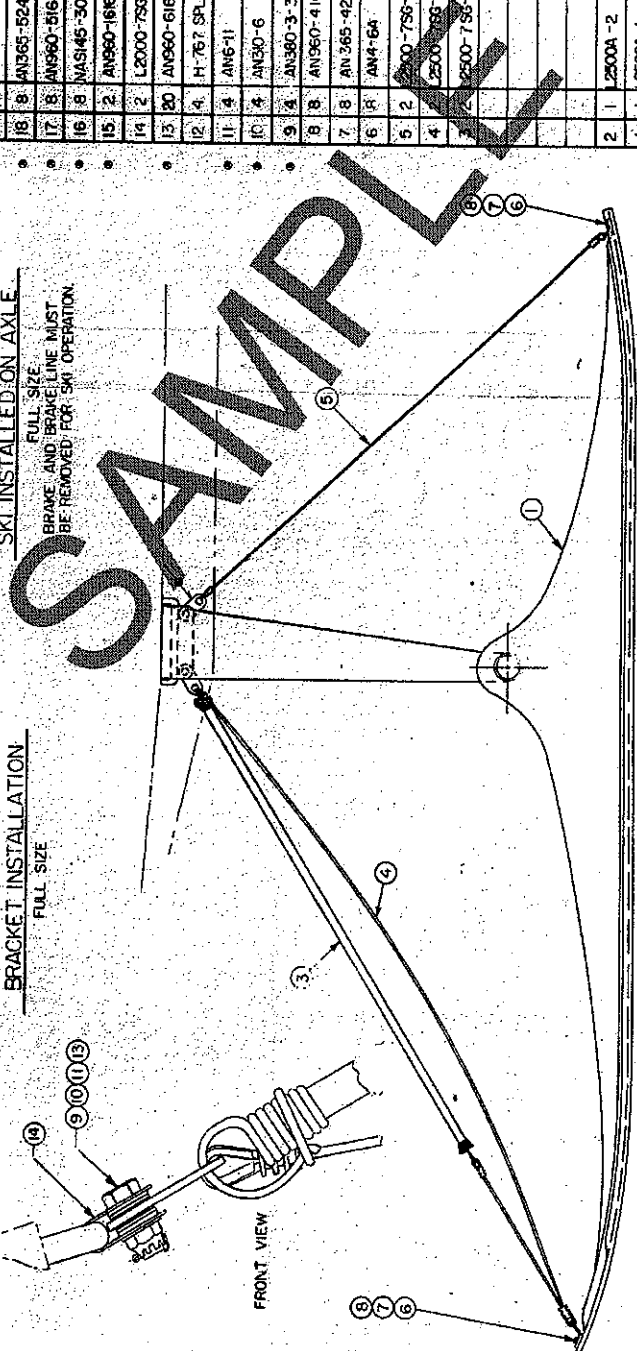
Chief, Engineering and Manufacturing Branch Alaskan Region

THIS DRAWING INCLUDES INFORMATION PROPRIETARY TO AIRGLAS ENGINEERING CO., INC. AND SHALL NOT BE USED TO MANUFACTURE OR REPRODUCE WITHOUT PERMISSION OF AIRGLAS ENGINEERING CO., INC.



BRACKET INSTALLATION
FULL SIZE
U BOLT - LOOSEN U BOLT TO
INSTALL BRACKET TORQUE
TO 800 INCH POUNDS

SKI INSTALLED ON AXLE
FULL SIZE
BRAKE AND BRAKE LINE MUST
BE REMOVED FOR SKI OPERATION



LEFT SKI

- INSTALLATION NOTES:
1. LIFT AIRCRAFT.
 2. REMOVE WHEELS AND AXLES.
 3. INSTALL SKIS ON AXLES (20) PER DRAWING.
 4. INSTALL BRACKET PER DRAWING.
 5. INSTALL PARTS 3, 4, 5.
 6. LOWER AIRCRAFT
 7. FILL OUT FAA FORM 337.
 8. ENTER MODIFICATION IN AIRCRAFT RECORDS.
 9. COMPUTE NEW WEIGHT AND BALANCE.

NO.	QTY	PART NO.	DESCRIPTION	STOCK SIZE	MAT'L	MAT'L SPEC.	FINISH	UNIT	SCALE
21	4	L2000-756-6	TUBE						
20	2	L2000-756-5	AXLE						
19	2	MS2025-24	NUT						
18	8	AN365-524	NUT						
17	8	AN960-516	WASHER						
16	8	AN345-50	BOLT						
15	2	AN980-1816-SPL	WASHER						
14	2	L2000-756-4	BRACKET						
13	80	AN960-616	WASHER						
12	4	H-767 SPL	BRZ BEARING						
11	4	AN6-11	BOLT						
10	4	AN30-6	NUT						
9	4	AN380-3-3	COTTER PIN						
8	8	AN360-416	WASHER						
7	8	AN365-428	NUT						
6	8	AN4-6A	BOLT						
5	2	L2000-756-3	CHECK CABLE ASSY						
4	4	L2500-756-2	SAFETY CABLE ASSY						
3	2	L2500-756-1	BUNGEE ASSY						
<p>ONE-HALF SCALE COPY OF ORIGINAL DWG.</p>									
<p>SKI KIT C.G. LOCATED 6.0 INCHES FORWARD OF AXLE CENTER LINE. NOT SHOWN</p>									
2	1	L2500A-2	RIGHT SKI						
1	1	L2500A-1	LEFT SKI						
X	1	L2500-756	SKI KIT						
<p>WT 66 LBS. C.G. 6" AHEAD OF MAIN GEAR AXLE</p>									

LIST OF MATERIALS

CONTRACT NO.	CONTRACT INC.
	AIRGLAS ENGINEERING CO., INC.
DATE	SCALE
	1/2" = 1"
STRUCT	WTS
HEAT TREAT	HEAT TREAT
STEEL	ALUM.
APPLICATION	SCALE
	1/2" = 1"

INSTALLATION PER STC SA266AL