

Federal Aviation Agency
Supplemental Type Certificate

Number SA224AL

This certificate, issued to Airglas Engineering Co., Inc.
Box 1254
Anchorage, Alaska

certifies that the change in the type design for the following product with the limitations and conditions therefor as specified hereon meets the airworthiness requirements of Part 3 of the Civil Air Regulations.

Original Product — Type Certificate Number: 799
Make: Cessna
Model: 170, 170A, and 170B

Description of Type Design Change:

Installation of Airglas Engineering Model L2500 or L3000 Wheel Replacement skis per Airglas Engineering Drawing L2500-170 dated April 5, 1966.

Limitations and Conditions:

This approval should not be extended to other specific aircraft of this model on which other previously approved modifications are incorporated unless it is determined that the inter-relationship between this change and any of those previously approved modifications will introduce no adverse effect upon the airworthiness of that aircraft.

This certificate and the supporting data which is the basis for approval shall remain in effect until surrendered, suspended, revoked, or a termination date is otherwise established by the Administrator of the Federal Aviation Agency.

Date of application: April 30, 1966

Date issued:

Date of issuance: December 22, 1966

Date amended:



By direction of the Administrator

R. W. Stephens
(Signature)

R. W. Stephens, Chief
Engineering and Manufacturing Branch
Alaskan Region (Title)

Any alteration of this certificate is punishable by a fine of not exceeding \$1,000, or imprisonment not exceeding 3 years, or both.

This certificate may be transferred in accordance with FAR 21.47.

SUPPLEMENT TO FAA APPROVED
AIRPLANE FLIGHT MANUAL

FAA Identification

Cessna Models 170A and 170B

Serial No.

This Supplement must be attached to FAA approved Airplane Flight Manual when Landes-Airglas Models L-500A or L3000 Main Skis are installed.

PERFORMANCE INFORMATION SECTION

Take-off: Under the most favorable conditions of smooth packed snow at temperatures approximating 32° F. the ski-plane take-off distance is approximately 10 percent greater than that shown for the landplane.

Landing: Under the most favorable conditions of smooth packed snow at temperatures approximating 32° F. the skiplane landing distance is approximately 20 percent greater than that shown for the landplane.

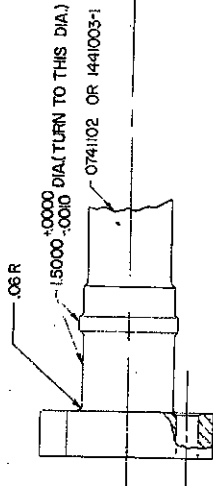
NOTE: In estimating distances for other conditions, caution should be exercised in that other temperatures or other snow conditions may either decrease or increase these distances.

Date: December 22, 1966

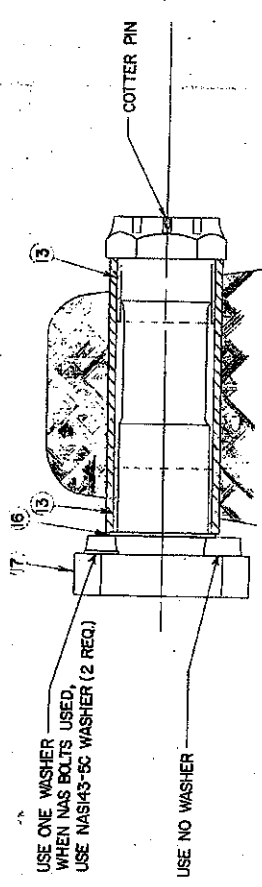
FAA APPROVED

Robert W. Stephens

Chief, Engineering and Manufacturing Branch Alaskan Region



COUNTERSINK 1/16 DEEP WITH 78° COUNTERSINK 2 PLACES

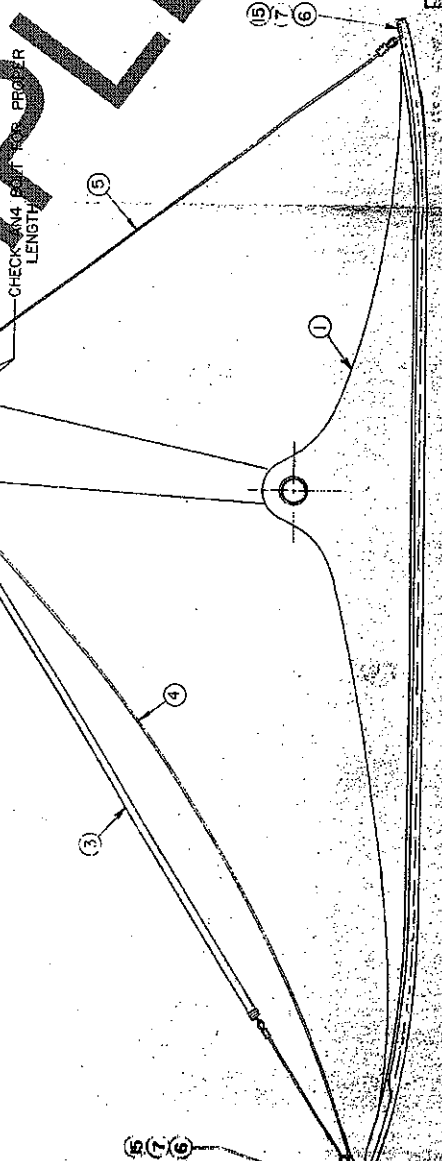
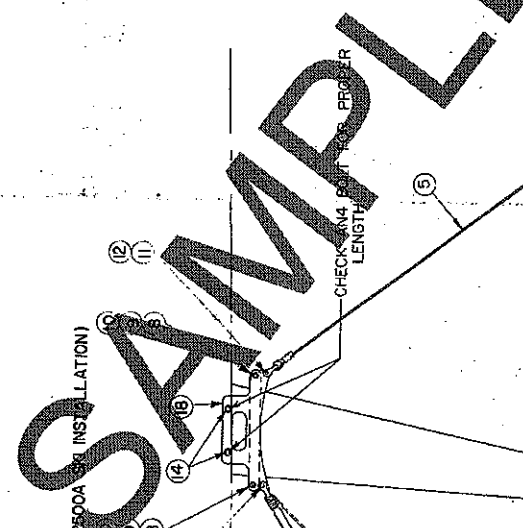


SKI INSTALLED ON AXLE
FULL SCALE

- NOTE:
1. INSTALL LEG BRACKET (8) AND WASHER (14) (USE WEDGE TO POSITION LEG BRACKET).
 2. SOLID ALUMINUM AXLE TO BE USED WITH L2500-170 INSTALLATION ONLY.
 3. CHECK AXLE BOLTS FOR PROPER LENGTH. (AN BOLTS SATISFACTORY FOR L2500A SKI INSTALLATION)
 4. FOR L3000-170 INSTALLATION USE PROPER LENGTH NAS145 AND NAS146 BOLTS. (SAME AS FURNISHED BY CESSNA FOR CLEVELAND BRAKE).
 5. WITH CLAMP ON AXLE AN BOLTS SHOULD BE USED.

THE RIGGING SUPPLIED WITH SKI KIT L2500-170 OR L3000-170 IS FOR LATE 170A EARLY 170B WITH GEAR P/N 054114 AND LATE 170B WITH GEAR P/N 054118-3 (LEFT) P/N 054118-2 (RIGHT).

UNIVERSAL CABLE ASSY. 105-7 MAY BE USED IN PLACE OF PARTS L2500-170-1, 8-2. THIS ASSY. USES SHOCK RING 8020.



LEFT SKI

INSTALLATION PER STC SA224AL

| NO. | QTY | PART NO. | DESCRIPTION | STOCK SIZE | MATL | MAT'L SPEC. | FINISH | REMARKS |
|-----|-----|--------------------------------|---|------------|---------------------------|-------------|--------|---------|
| 18 | 2 | 27 | LEG BRACKET OR FEDERAL P/N IIA362 | | | | | |
| 17 | 2 | 0541124-1 SPL 1441003-1 SPL | AXLE | | ORCESSNA SKI AXLE 0741103 | | | |
| 16 | 2 | AN960-166SP | WASHER | | | | | |
| 15 | 8 | AN4-6A | BOLT | | | | | |
| 14 | 4 | AN970-4 SPL | WASHER | | | | | |
| 13 | 4 | H-767 SPL | BRZ BEARING | | | | | |
| 12 | 4 | AN380-3-2 | COTTER PIN | | | | | |
| 11 | 4 | AN395-17 | CLEVIS PIN | | | | | |
| 10 | 4 | AN960-616 | WASHER | | | | | |
| 9 | 4 | AN965-624 | NUT | | | | | |
| 8 | 4 | AN6-5 | BOLT | | | | | |
| 7 | 8 | AN960-416 | WASHER | | | | | |
| 6 | 8 | AN965-428 | NUT | | | | | |
| 5 | 2 | -3 | CHECK CABLE ASSY. 44" THIMBLE TO THIMBLE | | | | | |
| 4 | 2 | -2 | SAFETY CABLE ASSY. 59 1/2" THIMBLE TO THIMBLE | | | | | |
| 3 | 2 | -1 | BUNGEE ASSY. 34" SPRING END TO SPRING END, (CUTTER 1/4" THIMBLE TO THIMBLE (NOT SHOWN)) | | | | | |
| 2 | 2 | 3000-2 | RIGHT SKI | | | | | |
| 1 | 2 | L3000-1 | LEFT SKI | | | | | |
| | | | OR | | | | | |
| 2 | 1 | L2500A-2 | RIGHT SKI | | (NOT SHOWN) | | | |
| 1 | 1 | L2500A-1 | LEFT SKI | | | | | |
| | | | SKI KIT | | | | | |
| | | | WT: 68 LBS. CG 6" AHEAD OF MAIN GEAR AXLE | | | | | |

ONE-HALF SCALE
COPY OF ORIGINAL DWT.

LIST OF MATERIALS

| | | |
|---|-------------------------------|-----|
| UNLESS OTHERWISE SPECIFIED CONTRACT NO. | AIRGLAS ENGINEERING CO., INC. | |
| TOLERANCES UNLESS OTHERWISE SPECIFIED ARE IN INCHES | DECIMALS ANGLES | |
| FINISH | GRA | GRK |
| HEAT TREAT | MIL-H-6875 | |
| STEEL | MIL-H-6888 | |
| ALUM | MIL-H-6899 | |
| MARCAST | MIL-H-6857 | |