

United States of America
Department of Transportation — Federal Aviation Administration
Supplemental Type Certificate

Number SA223AL

This certificate amends Airglas Engineering Co., Inc.
P. O. Box 6107
Anchorage, Alaska 99502

certifies that the change in the type design for the following product with the limitations and conditions
hereinafter specified herein meets the airworthiness requirements of Part 3

Specifications

Original Product — Type Certificate Number: 546

Make: Cessna

Model: 180 through 180H

3424
185 through 185H and
A185H and A185H

CIVIL AIR

Description of Type Design Change:

Installation of Airglas Engineering Model 13000 wheel replacement skis per
Airglas Engineering Drawing 13000-180 Revision A 10/6/71.

Installation on Canadian operated aircraft models per Airglas Engineering
Drawing 13000-180A Revision A 10/6/71.

Exclusions and Conditions:

This approval should not be extended to other specific aircraft of this model
on which other previously approved modifications are incorporated unless it
is determined that the inter-relationship between this change and any of those
previously approved modifications will introduce no adverse effect on the
airworthiness of that aircraft.

This certificate and the supporting data which is the basis for approval shall remain in effect until a
renewed application is received or a termination date is otherwise established by the Administrator of the
Federal Aviation Administration.

Date of application: April 30, 1966

Date issued:

Date of issuance: December 22, 1966

Valid until: Jan. 16, 1969 - Apr. 1, 1974



Signature of the Administrator
ROBERT W. STEPHENS
Chief, Engineering & Manufacturing Branch
Alaskan Region

Any alteration of this certificate is punishable by a fine of not exceeding \$1,000, or imprisonment not exceeding 3 years, or both.
This certificate may be transferred in accordance with FAR 21.47.

FAA Form 8130-2 (10-6-68)

SAMPLE

SUPPLEMENT TO OWNERS MANUAL

FAA Identification

Cessna Models 180 185

Serial No.

This Supplement must be attached to FAA Approved Airplane Flight Manual when Landes-AirGlas Model L-3000 Main Skis are installed.

PERFORMANCE INFORMATION SECTION.

Take-off: Under the most favorable conditions of smooth packed snow at temperatures approximating 32° F., the ski-plane take-off distance is approximately 10 percent greater than that shown for the landplane.

Landing: Under the most favorable conditions of smooth packed snow at temperatures approximating 32° F., the ski-plane landing distance is approximately 20 percent greater than that shown for the landplane.

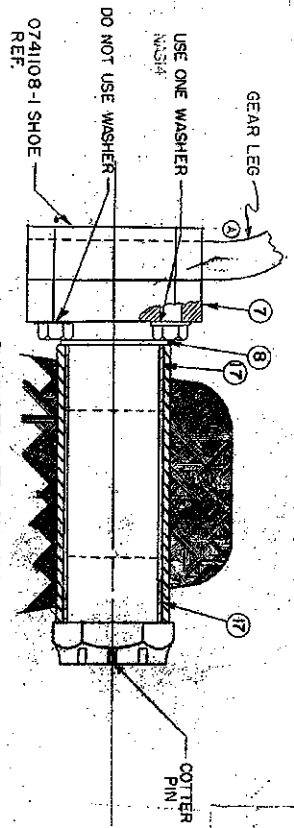
NOTE: In estimating distances for other conditions, caution should be exercised in that other temperatures or other snow conditions may either decrease or increase these distances.

Date: December 22, 1966

FAA APPROVED

Robert W. Stephens
Chief, Engineering and Manufacturing Branch Alaskan Region

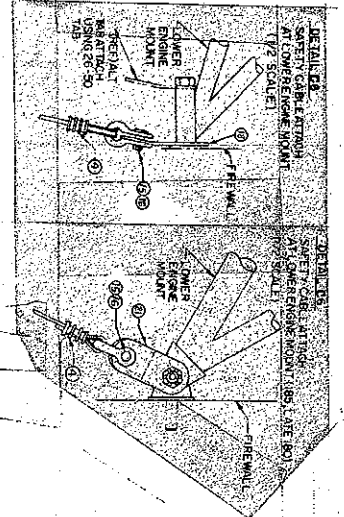
SAMPLE



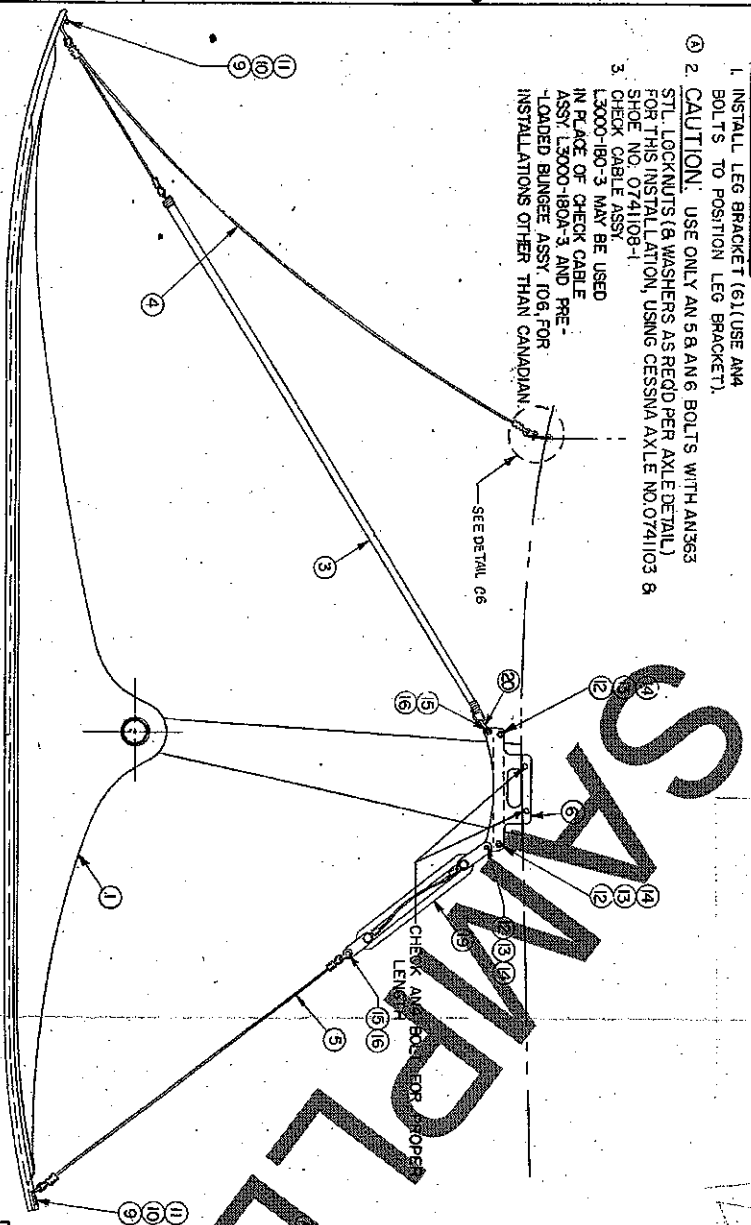
SKI INSTALLED ON AXLE
FULL SCALE

NOTE

1. INSTALL LEG BRACKET (6) (USE AN4 BOLTS TO POSITION LEG BRACKET).
2. CAUTION: USE ONLY AN 5/8 AN 6 BOLTS WITH AN363 STL. LOCKNUTS (8 WASHERS AS REQD PER AXLE DETAIL) FOR THIS INSTALLATION, USING CESSNA AXLE NO. 0741103 & SHOE NO. 0741108-1.
3. CHECK CABLE ASSY. L3000-180-3 MAY BE USED IN PLACE OF CHECK CABLE ASSY. L3000-180A-3 AND PRE-LOADED BUNGE ASSY. 106, FOR INSTALLATIONS OTHER THAN CANADIAN.



NOT FURNISHED WITH KIT



LEFT SKI

INSTALLATION PER STC SA223AL

FOR THE SKIING AND SKI EQUIPMENT INDUSTRY...
© 1984 BY AIRGLAS ENGINEERING CO., INC.
ALL RIGHTS RESERVED.

NO.	QTY	PART NO.	DESCRIPTION	STOCK SIZE	MATL.	MATL. SPEC.	FINISH
21	2	26-50	TAB				
20	2	AN15-46	SHACKLE				
19	2	106	PRELOADED BUNGE ASSY				SHOCK RING NO. 9044 OR GENAIRE PART NO. 11A1352
18	2	30	TAB				
17	4	H-767 SPL	SPZ BEARING				
16	6	AN390-3-2	COTTER PIN				
15	6	AN399-17	CLEVIS PIN				
14	6	AN960-616	WASHER				
13	6	AN365-624	NUT				
12	6	AN6-7	BOLT				
11	8	AN960-416	WASHER				
10	8	AN365-428	NUT				
9	8	AN4-6A	BOLT				
8	8	AN90-166	WASHER				
7	2	0741103	AXLE				(CESSNA SKI AXLE & 0741108-1 SHOE) ∇
6	7	27	LEG BRACKET				OR FEDERAL PART NO. 11A362
5	2	-3	CHECK CABLE ASSY				31/8" THIMBLE TO THIMBLE 5/32 DIA.
4	2	-2	SAFETY CABLE ASSY				5/2" THIMBLE TO THIMBLE 5/32 DIA.
3	2	-1	BUNGE ASSY				3/4" SPRING END TO SPRING END, (COTTER PIN) THIMBLE TO THIMBLE (NOT SHOWN)
2	1	L3000-2	RIGHT SKI				
1	1	L3000-1	LEFT SKI				
X	1	L3000-80A	SKI KIT				WT. 80 LBS. C.G. 6" AHEAD OF MAIN GEAR AXLE

LIST OF MATERIALS

<p>DESIGNER: AIRGLAS ENGINEERING CO., INC. DRAWN BY: [Name] CHECKED BY: [Name] DATE: 10/1/84</p>	<p>CONTRACT NO. [Number] SPEC. CONTRACT NO. [Number] PART NO. [Number]</p>	<p>PROJECT: L3000 SKI INSTALLATION CESSNA 180 CANADIAN RIGGING</p>
<p>APPLICATOR: [Name] USED ON: [Name]</p>	<p>SCALE: 1/4"</p>	<p>SHEET 1 OF 1</p>

REVISION	DESCRIPTION	DATE	APPROVED
4	REVISED NOTE 2, ADDED ∇ ADODED DETAIL 66 REVISED		